

General Biology Lab 0304111  
Fall Semester  
Date: 25/10/2011  
Instructor: Dr. Basem Jaber

Name (in Arabic): .....  
Section: .....12.....  
Seat no.: .....  
Quiz 2

Select the most correct answer and write the letter in the blank (1 pt. each).

1. Movement of molecules down their concentration gradient is called diffusion  
A. osmosis      ☒ B. diffusion      C. hyponicity      D. hypertonicity      E. isotonicity
2. In the dialysis experiment, the color of starch solution changed to blue because iodine molecules moved into dialysis bag  
☒ A. iodine molecules moved into dialysis bag.      B. starch moved outside dialysis bag.  
C. starch moved into dialysis bag.      D. NaOH molecules moved outside the dialysis bag.  
E. both iodine and starch moved in both directions
3. The goal of the experiment in which you have used Petri dishes with agar medium is to show that A, B and C are correct  
A. molecules move from high concentration to low concentration.  
B. malachite green and methylene blue have different molecular weight.  
C. molecules of different sizes move at different rates across semi-solid medium.  
☒ D. A, B and C are correct      E. Only A and C are correct
4. Elodea cells became turgid when they were placed in a hypotonic solution.  
☒ A. hypotonic      B. isotonic      C. hypertonic      D. high salt      E. only A and B are correct
5. What happened to the level of sugar solution when you placed the osmometer in water? It increased  
☒ A. increased.      B. decreased.      C. did not change.  
D. decreased then increased.      D. increased then decreased.
6. In fermentation experiment, which of the following sugars was expected to produce the highest amount of CO<sub>2</sub> in 15 minutes? glucose  
A. Sucrose      ☒ B. Glucose      C. Maltose      D. starch      e. Cellulose
7. In the absence of oxygen, yeast obtains energy by fermentation  
A. photosynthesis.      ☒ B. fermentation.      C. respiration.  
D. B and C are correct      E. Non of the above is correct
8. In the photosynthesis experiment, you observed Elodea carrying out photosynthesis because O<sub>2</sub> bubbles were formed in the inverted tube  
A. it changed its color.      B. the water became turbid and cloudy.  
C. CO<sub>2</sub> bubbles were released out of the beaker.      D. CO<sub>2</sub> bubbles were trapped in the inverted tube.  
☒ E. O<sub>2</sub> bubbles were formed in the inverted tube.
9. During photosynthesis experiment, you have added sodium bicarbonate to all of them  
A. increase the rate of photosynthesis.      ☒ B. increase the amount of CO<sub>2</sub>.  
C. increase the amount of O<sub>2</sub> produced.      D. A, B and C are correct.  
E. only A and B are correct
10. During photosynthesis experiment, moving the light closer to the plant resulted in only A and C are correct  
A. increased photosynthesis rate.      B. increased amount of CO<sub>2</sub> released.  
C. increased number of bubbles produced.      D. A, B and C are correct  
☒ E. only A and C are correct



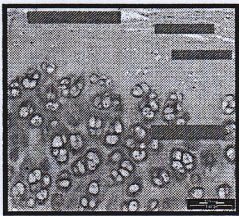
General Biology Lab 0304111  
Fall Semester  
Date: 22/11/2010  
Instructor: Dr. Basem Jaber

Name (in Arabic): .....  
Section: .....12 .....  
Seat no.: .....  
Quiz 3

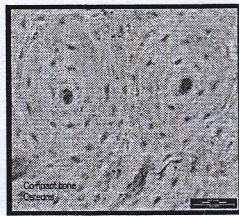
**Fill in the Blank (1 pt. each)**

1. Mention one of the major types of epithelial tissues Simple epithelial tissues  
(simple cuboidal epithelium tissues)
2. Where can you find stratified keratinized epithelial tissue? Skin
3. What type of epithelial tissue lines the inner part of kidney tubules? Cuboidal simple epithelium tissue
4. Give an example of a special connective tissue. Bone / Blood
5. What type of cartilage does the trachea have? Hyaline cartilage
6. In which tissue can you find osteocytes? Compact Bone
7. Blood supply is carried to the bone through Haversian canals

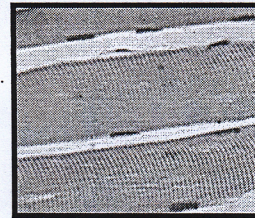
8. Name the tissues below



i) Hyaline cartilage



ii) Simple squamous epithelium tissue



iii) Skeletal muscle tissue