



تقدمان

اسئلة بيو ١ فاينال

BIOLOGY (1) FINAL

1-The number of electrons for the oxidation of one glucose is

24

2. one of the following is insoluble in water ?

CH₃-CH₃

3. the products for the hydrolysis of one acetyl -CoA ?????

3NADH, ATP, FADH₂, 2CO₂

4. Which of the following are not present in all viruses:

a-membranous envelope .

b-capsomeres.

c-capsid.

d-genome.

e.nuclear acid.

5. the bonds that are distorted of the denaturation of the protein ?

a) ionic b) hydrogen c) disulfide bridges d) hydrophobic e) all of the above

6. which of the following is not a true polymer :

a) steroids b) carbohydrates c) proteins d) all are polymers e) none of the above

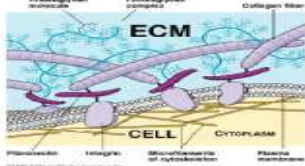
7. The differences between the 20 types of all amino acids are due to ?

The difference in R groups

8. What region in DNA does the RNA polymerase recognise?

Promoter.

9. which bonds are broken down when water vaporizes ?
hydrogen bond between water molecules



10. this picture is found in ?



animals only

11. in the following picture , there was an arrow pointing into the matrix

12. The similarity between electron transport chain and fermentation ?
Oxidation of NADH to NAD⁺

13. sucrose is an :

((aldose-ketose)) disaccharide

14. Which is wrong about aquaporins ?
It is a carrier protein

15. Which is wrong about water ?
Low surface tension

16. Which is wrong about cofactors ?
They include ribozymes as well as enzymes

17. Prions infectious : protein particles

18. Virioids circular RNA molecule

19. tertiary structure of DNA ?
R interaction

20. In prokaryotes who removes the RNA primer ?

Dna ploymerase 1

21.Osmosis is the movement of water from high concentration of To low concentration of ?

Free H₂O molecules . Free H₂O molecules

**22.Which is not done by golgi apparatus ?
degredation of macromolecules**

**23.a question about the step number 5 in Glycolysis , " which is the enzymes does it include ?
aldolase & isomerase**

**24.DNA strands joins by ?
H-bonds between nitrogen bases**

25.a question about enzymes included in kelvin cycle >>> rubisco & kinase

26.if thymine is 40% then guanine is ? 10%

**27.what is the mutation that results from UV ?
thymine dimer**

28.the two strands of DNA is ?? antiparallel

**29.Beadle & Tatum worked with ??
Neurospora ,,**

30.which one don't need gtp in synthesis of proteins ? release factor

**31.all of this basis found in DNA except ?
Uracil**

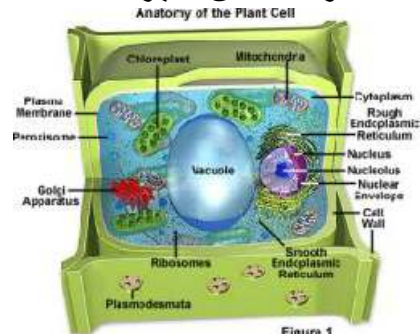
**32.The 5' end of okazaki fragment is attached to what?
RNA translation 5end - 3end , N-term C-term**

33.Reverse transcriptase is used to change what to what
RNA-DNA + complementary DNA

34.If bacteria contains carotenoids absorbs IR radiation what colour does it appear ?
yellow and orange because carotenoids absorb green and blue

35. رسة فايروس الايدز عليها سنالين عن الاجزاء لذلك يفضل حفظهم

36. رسة الخلية النباتية نفس المجاورة بالضبط وعليها 6 اسئلة واسئلة عن الاجزاء فقط.



37.a picture for endergonic reaction and asking what is the right sentence ...

38.the mismatched sentence is
nucleus = all the DNA

39.a question about two pictures of viruses , pointing in a part in each one and asking
about the name of the part .. for the " phage " they point towards " tail fibers "
and for influenza viruses towards glycoproteins >> see the book for the images

40.what does the operon model attempt to explain ?
coordinated control of gene expression in bacteria

41.the process in which fats get into the cellular respiration pathways ?
B- oxidation

42. in the non circular flow what is the first and final electron acceptor ?
H₂O .. NADP⁺

43.what is the type of the RNA in the AIDS virus ?

2 identical ssRNA

44. a question about the figure in page 381 , pointing into two steps of gene expression and asking what is the name of them ... the answers was RNA processing.& .translation

**45.. what is the mismatched sentence :
large subunit- mRNA binding site
46.remove intron ?
(spliceosome)**

**47.insertion or deletion Nucleotide-pair causes:
Frameshift mutation**

**48.Change a codon into a stop codon called:
nonsense mutation**

49.which of the following contribute with the H^+ concentration across the thylakoid membrane

NAD^+ / $NADPH$ formation

**50.if there was a nonsense mutation in the reg. gene what will happened ?
continues producing of tryptophan**

**51.The most scientific approach that Watson and Crick relied on in their DNA model
is X-RAY CRISTALLOGRAPHY.**

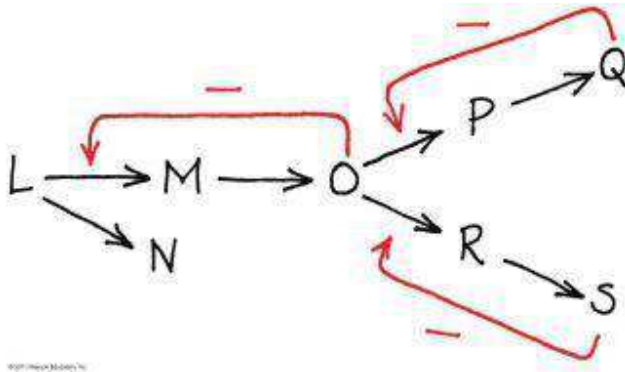
**52.cholesterol is entered inter the cell by a significant -oriented way by...
receptor -mediate cytosin**

**53.to build the virus proteins it uses :
the host's free ribosomes & the host's bound ribosomes**

**54.the integrated viral DNA of HIV with human DNA is called
provirus**

55. which of following is not true about codons?
each one codes for different amino acid

56. This figure ...first they asked about the true sentence
(when both Q and S are present in high concentration N will increase)



MEGA
فكرة .. واقع .. تميز

