

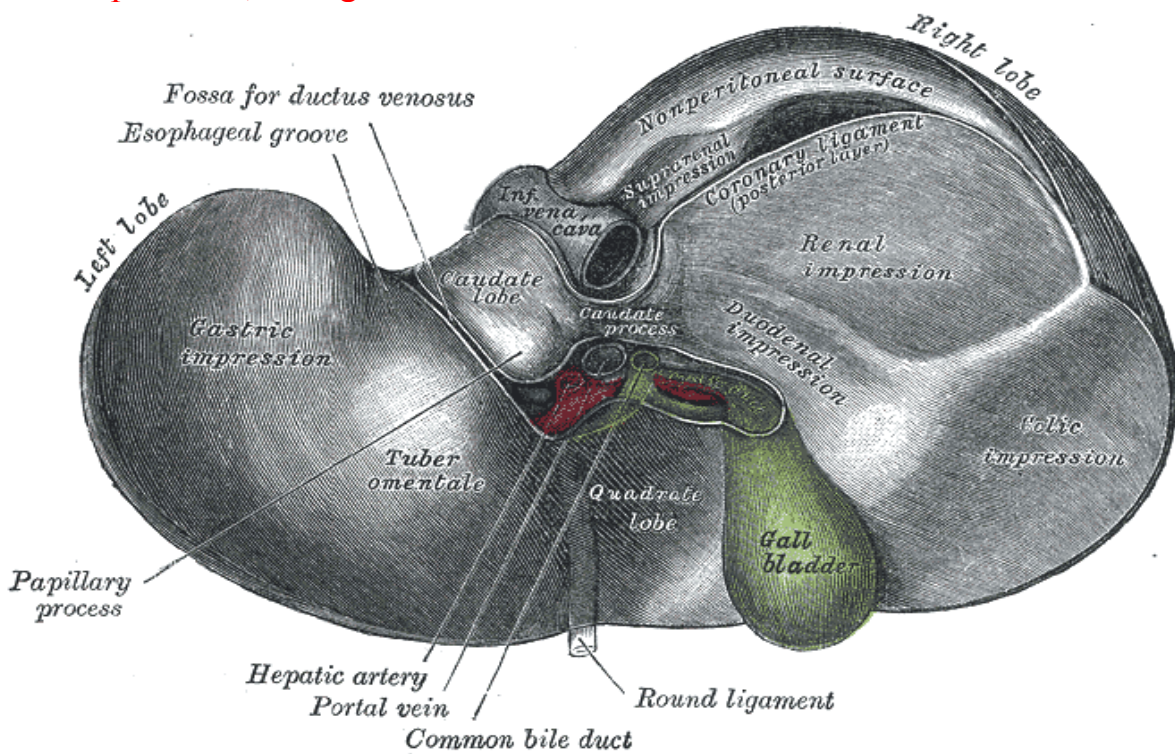
ملاحظة : المعلومات باللون الأحمر جاءتتا في امتحان 2014

## Anatomy :

### 1- Liver impressions :

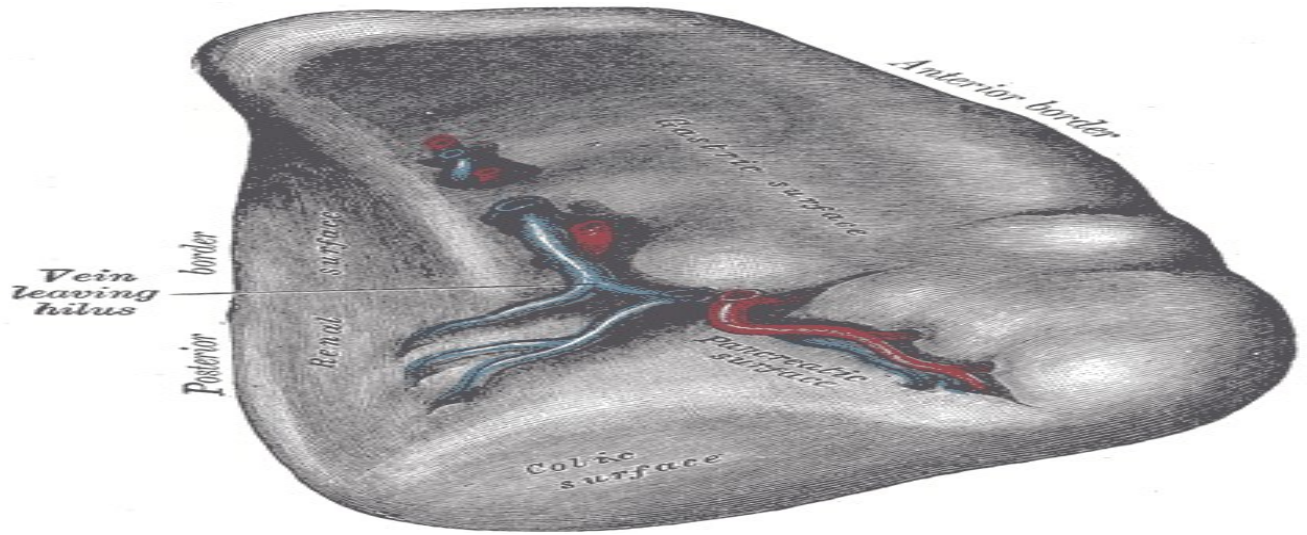
- esophageal , gastric , pyloric , duodenal , renal , suprarenal .
- direct question ; what is the pointed ( pinned ) impression?!

- the poited structure & ligated structure ?
- renal impression , the ligamentum teres



### 2- Spleen impressions :

- gastric ( الأكبر ) , left colic flexure , renal , pancreatic .
- Hilum , splenic artery ( low yield ) .



### 3- Small intestine :

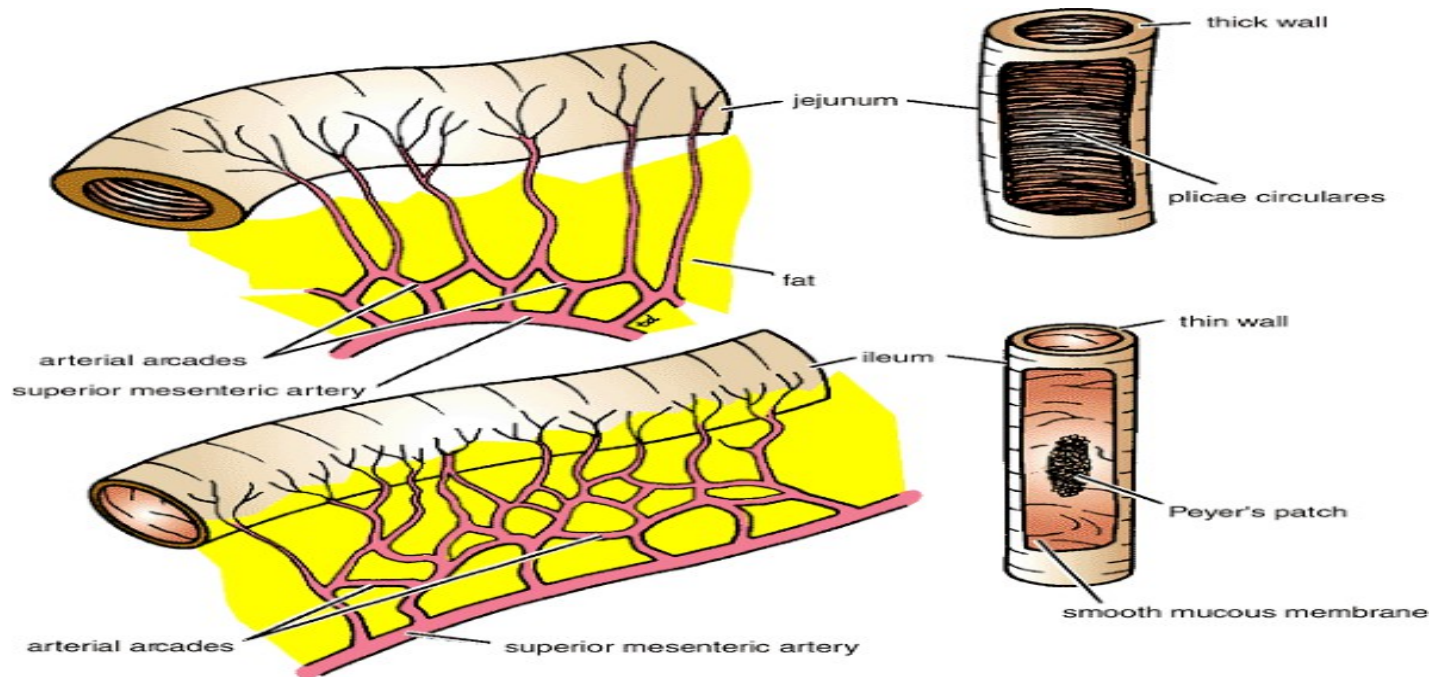
- how to differentiate between :

-- Jejunum :

Simple arcades , long vasa recta , fewer fat than ileum , longer diameter ( thicker) .

-- ileum :

Complex arcades , short vasa recta , more fat , shorter diameter.



#### 4- Appendix :

- very important , u have to know the following :
- length : 2-22 cm , 1 inch below the ileocecal valve
- intraperitoneal , has Mesoappendix
- usually Retrocecal
- blood supply : from post. Cecal
- possible to become Gangrenous
- Appendicitis : at begins as paraumbilical pain ( T10 )
- Mcburney's point and incision

---

#### 5- Tongue & salivary glands :

- Ant.2/3 --> theory info. about it :
- sensation : lingual n. , taste : Chorda tympani from the facial.
- Post.1/3 --> theory info. about it :
- sensation and taste : glossopharyngeal .
- **Hypoglossal n. , Lingual n.** ( both are very important ) :  
identify the ligated structure ?! واحد منهم جاي ع الأکید
- Facial artery --> related to submandibular gland , tortuous .

---

#### 6- Ant. Abd. Wall :

- inf. Epigastric artery --> medial to the deep ring ( low yield )

---

#### 7- post. Abd. Wall :

- Lumbosacral trunk .
- S1 nerve --> Medial to the lumbosacral trunk .

what is the ligated structure ?!

-----

#### X-ray :

1- barium meal :

the most important things :

- Fundus of stomach.

- **Doudenal CAP (مخيم)**

2- barium enema :

For large intestine .

# Doctor said that he might pointed the common bile duct , and ask about its length : it's about 10 c.m .

---

past papers :

# about the liver he pointed at gastric impression and ligamentum teres and asked to identify the pointed structures

# X-ray picture: barium meal duodenal cap .

# pointed at a structure on your cheeks and asked to identify it : it was hypoglossal nerve

# pointed at a notch in the mandible and asked : the structure related to pointed area is a branch from : maxillary artery (( لست متأكدا من السؤال ))

# pointed the appendix and asked : all the following regarding the pointed structure is true except:

- a) antimesenteric
- b) contain tenia coli
- c) supplied by a branch from posterior cecal artery
- d)

# pointed at the jugular foramen in the skull and asked: which ganglion pass from here :

- a) Ciliary ganglion
- b) Otic ganglion

Histo :

## & 1st lab :

### 1) Submandibular gland :

- mixed secretion.
- Serous Demilune (مهم)

[msg2018.weebly.com/uploads/1/6/1/0/16101502/gi\\_histology\\_lab\\_slides\\_1\\_zq.pdf](http://msg2018.weebly.com/uploads/1/6/1/0/16101502/gi_histology_lab_slides_1_zq.pdf)

## & 3rd lab :

### 1) Appendix :

- very narrow lumen .
- Lymphatic nodules in Lamina propria and maybe in Submucosa .

---

### 2) Gallbladder :

- folding in mucosa ( Honeycomb appearance ) .
- No goblet cells .
- ill-defined or absent Muscularis Mucosa & Submucosa .
- Irregular Muscularis Externa ( patches of smooth muscles ) .

---

### 3) Pancreas :

- Islets of Langerhans : faint patches .
- Acini :
  - centroacinar cells.
  - intercalated duct , BUT No striated ducts .
  - cells show Polarity : Apex is acidic , Base is Basic .

حكي الدكتور ممكن يجيب صورة على التكبير الضعيف ، ويطلب منا نعرف المقطع ، وبنعرفه من خلال جزر لانجرهانس

---

### 4) Liver :

- Animal section : clear Hexagonal appearance .
  - Human section : unclear Hexagonal ...
  - Stains :
    - PAS stain : stains the Glycogen , زهري
    - Silver Nitrate : stains the Reticular fibers , أسود
  - Kupffer cells : Dark , أسود
  - central vein .
  - portal triad :
    - V : the largest , فاضي من جوه
    - A : smaller with thick wall , أحمر
    - D : simple cuboidal , أزرق
- 

### past papers :

[http://www.4shared.com/office/skMbemsl/lab\\_exam\\_GI.html](http://www.4shared.com/office/skMbemsl/lab_exam_GI.html)

---

: هذه بعض الأسئلة التي جاءت في امتحان (2014) غير المذكورة فيما سبق\*

#### Anatomy :

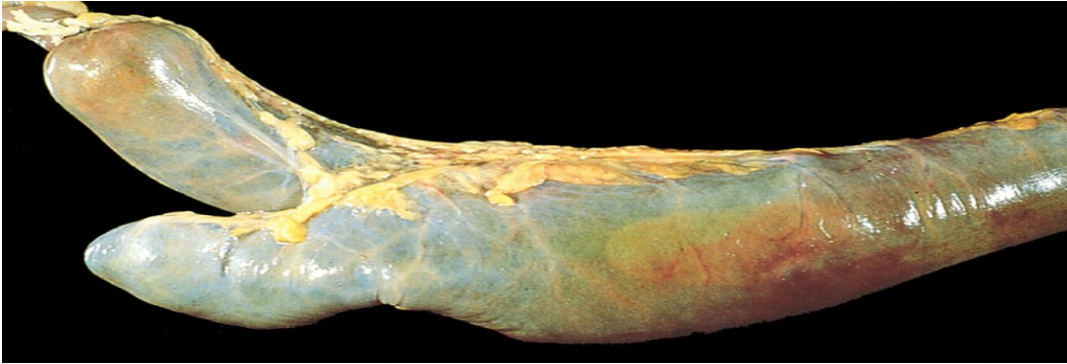
- stomach .. ligated artery : left gastric .
- the mandible .. pointed the ramus .. the gland related to the pointed structure takes its secretomotor supply from : Otic ganglia .

#### Histo :

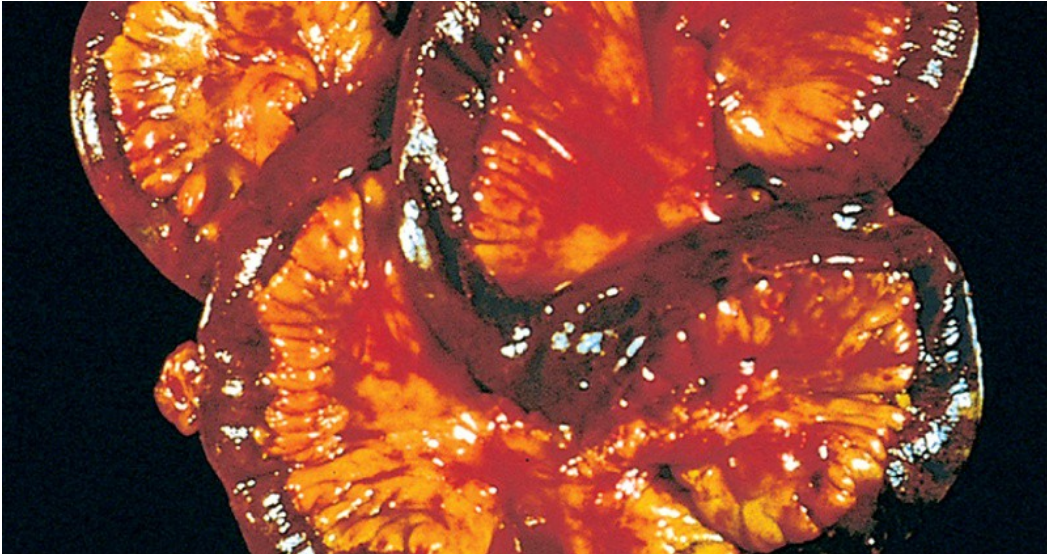
- paneth cells

#### patho :





Meckel diverticulum



Ischemic bowel disease