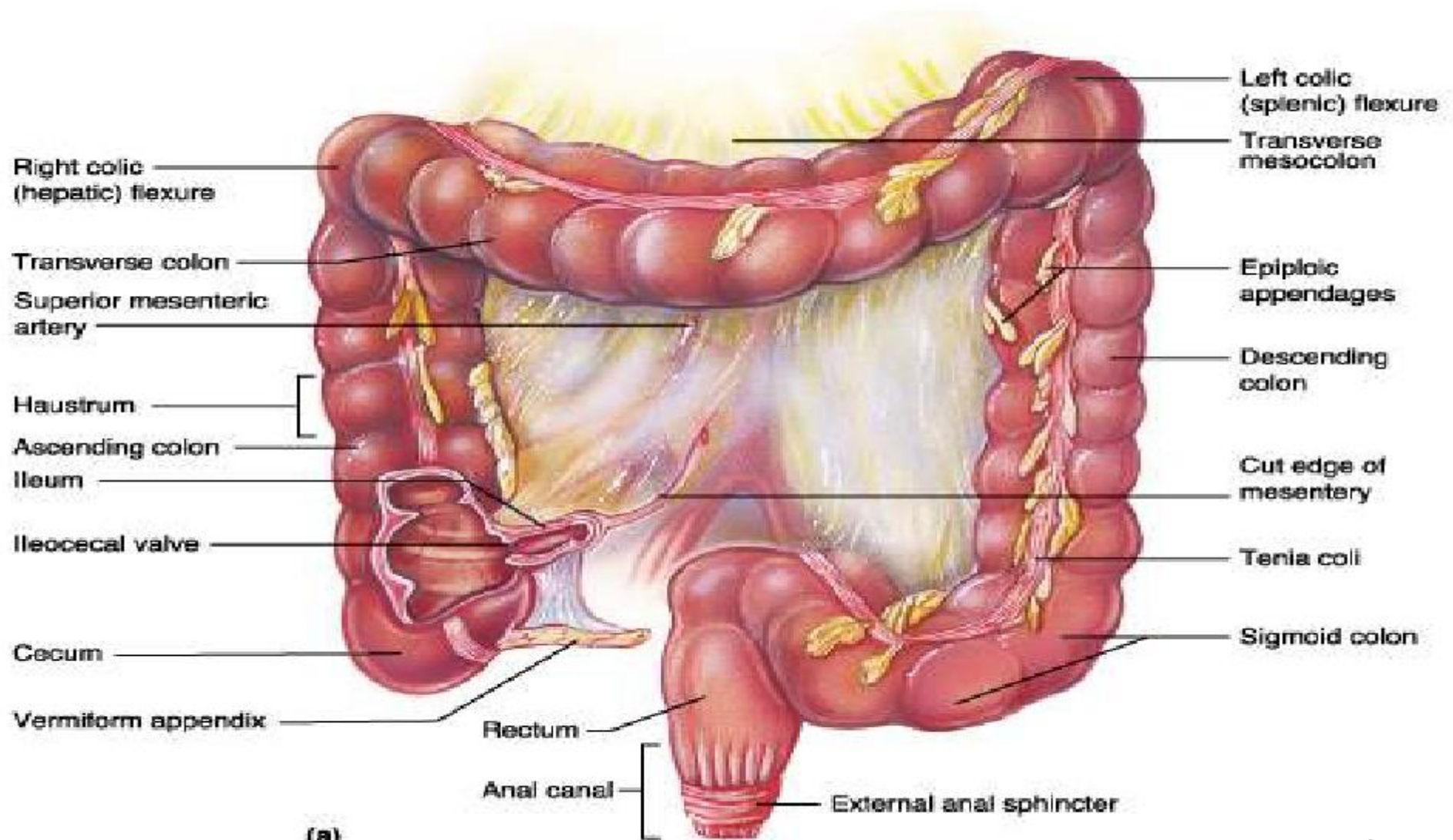


Large intestine

Anatomy of the Large Intestine



Large Intestine

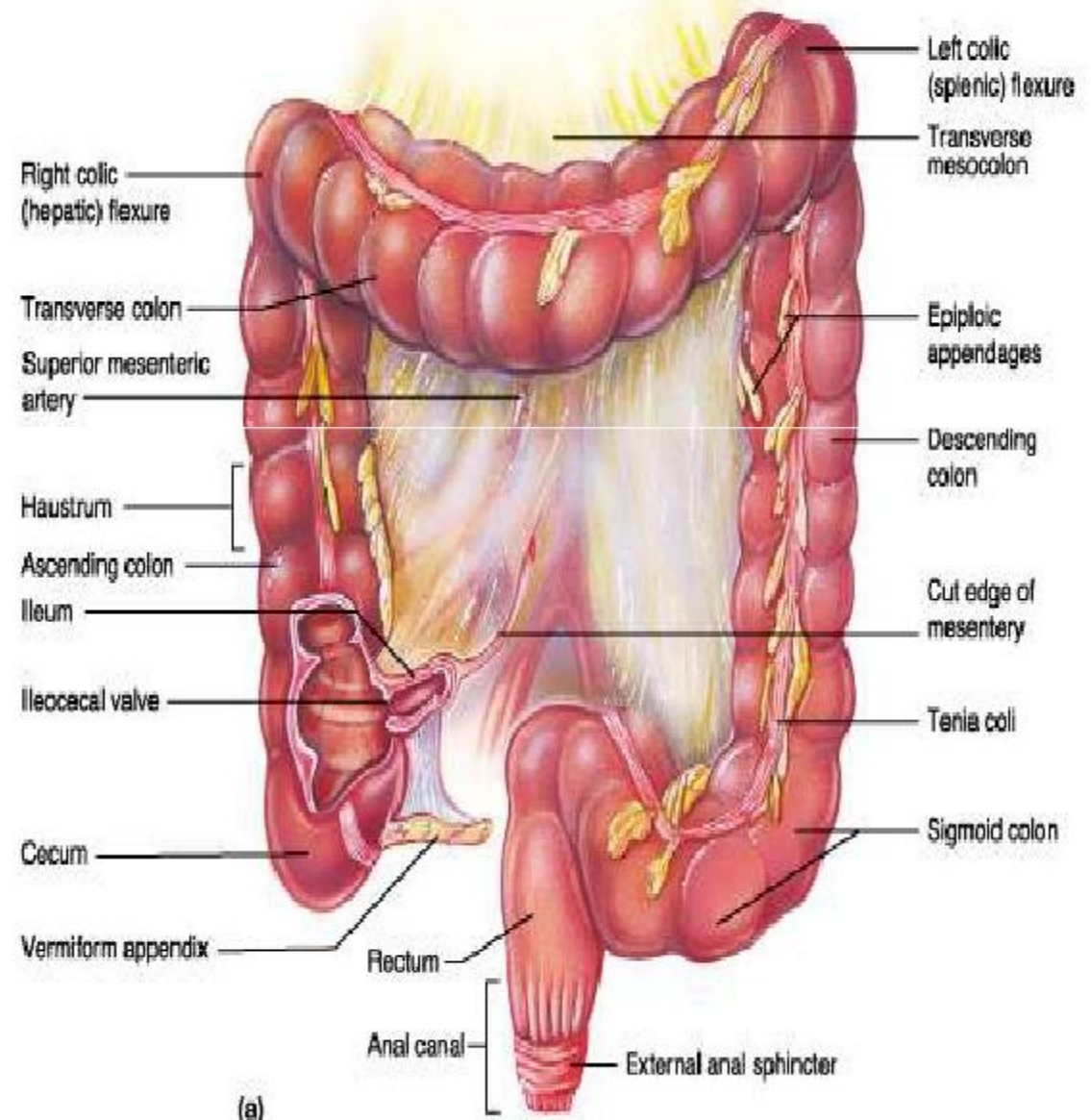
- Extends from ileocecal valve to anus
- Length = 1.5- 2.5m = 5 feet
- Regions
 - Cecum = 2.5- 3 inch
 - Appendix= 3-5 inch
 - Colon
 - Ascending= 5 inch
 - Transverse= 15 inch
 - Descending= 10 inch
 - Sigmoid colon = 10 – 15 inch
 - Rectum= 5 inch
 - Anal canal= 4 cm

General features of large intestine

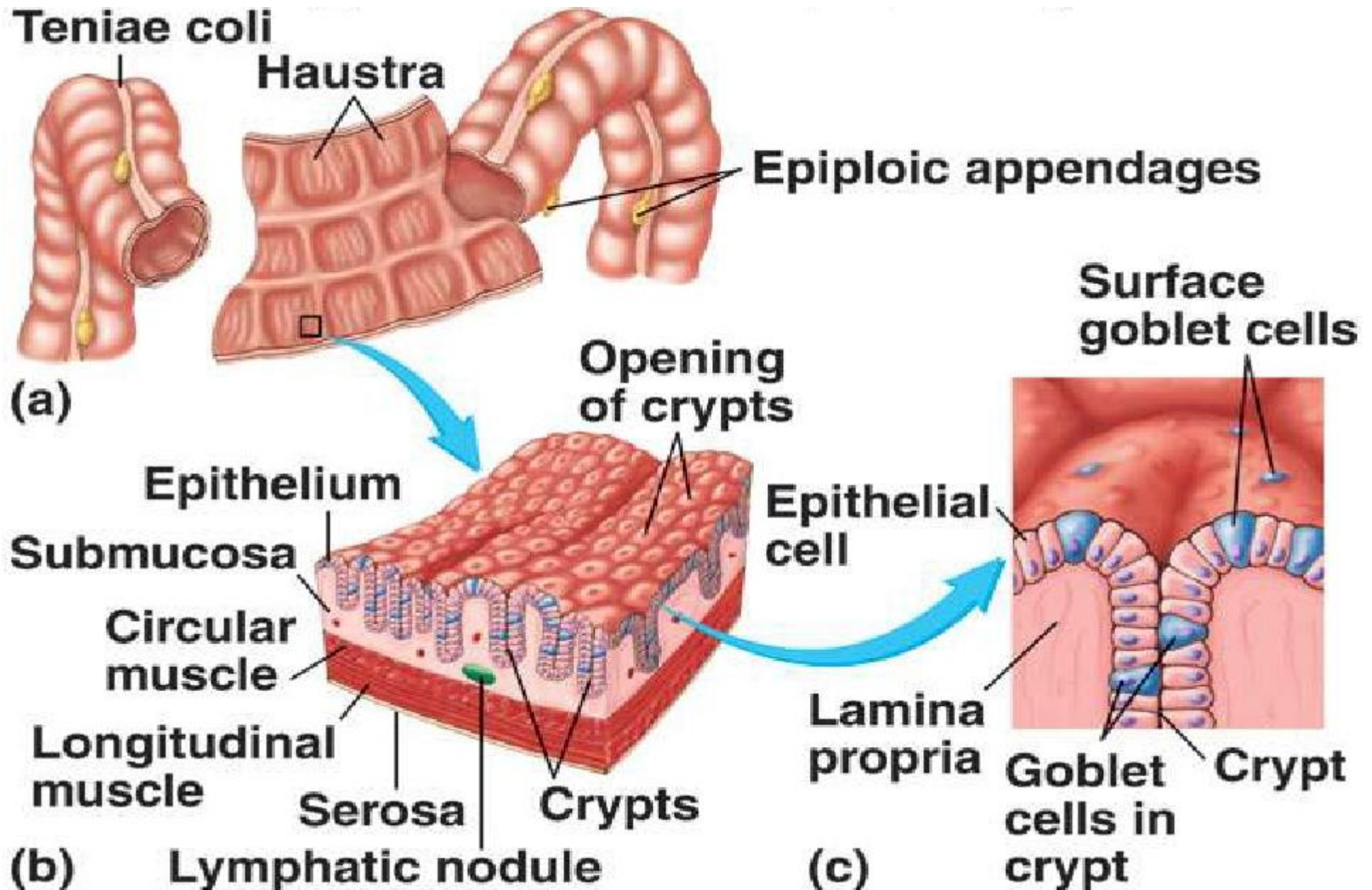
1- Sacculatation= Haustra

2- Teania coli(three separate longitudinal ribbons of smooth muscle) **except appendix and rectum**

3- Appendices epiplolca(adipose structures protruding from the serosal surface of the colon) **except appendix , Cecum and rectum**

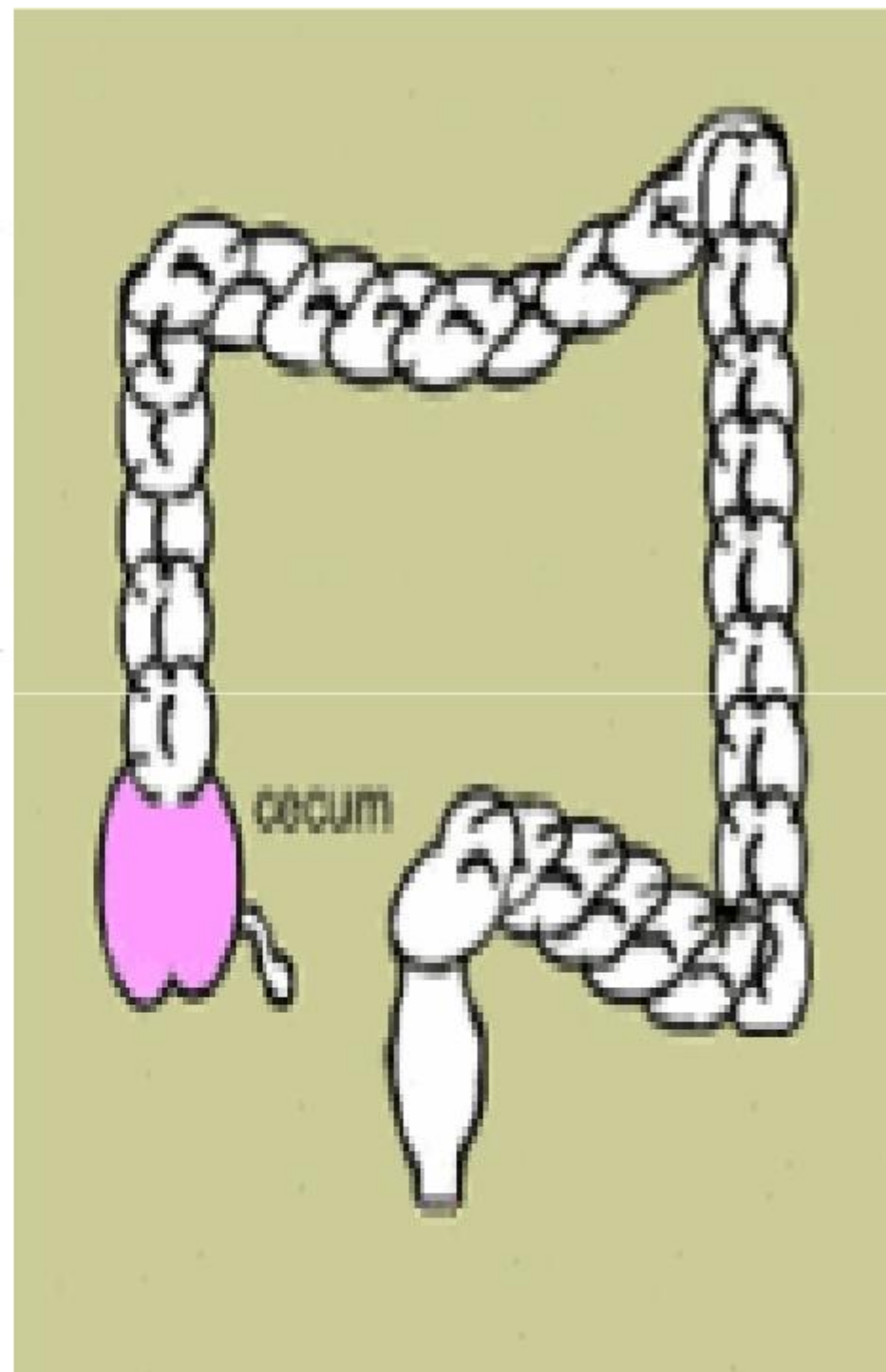
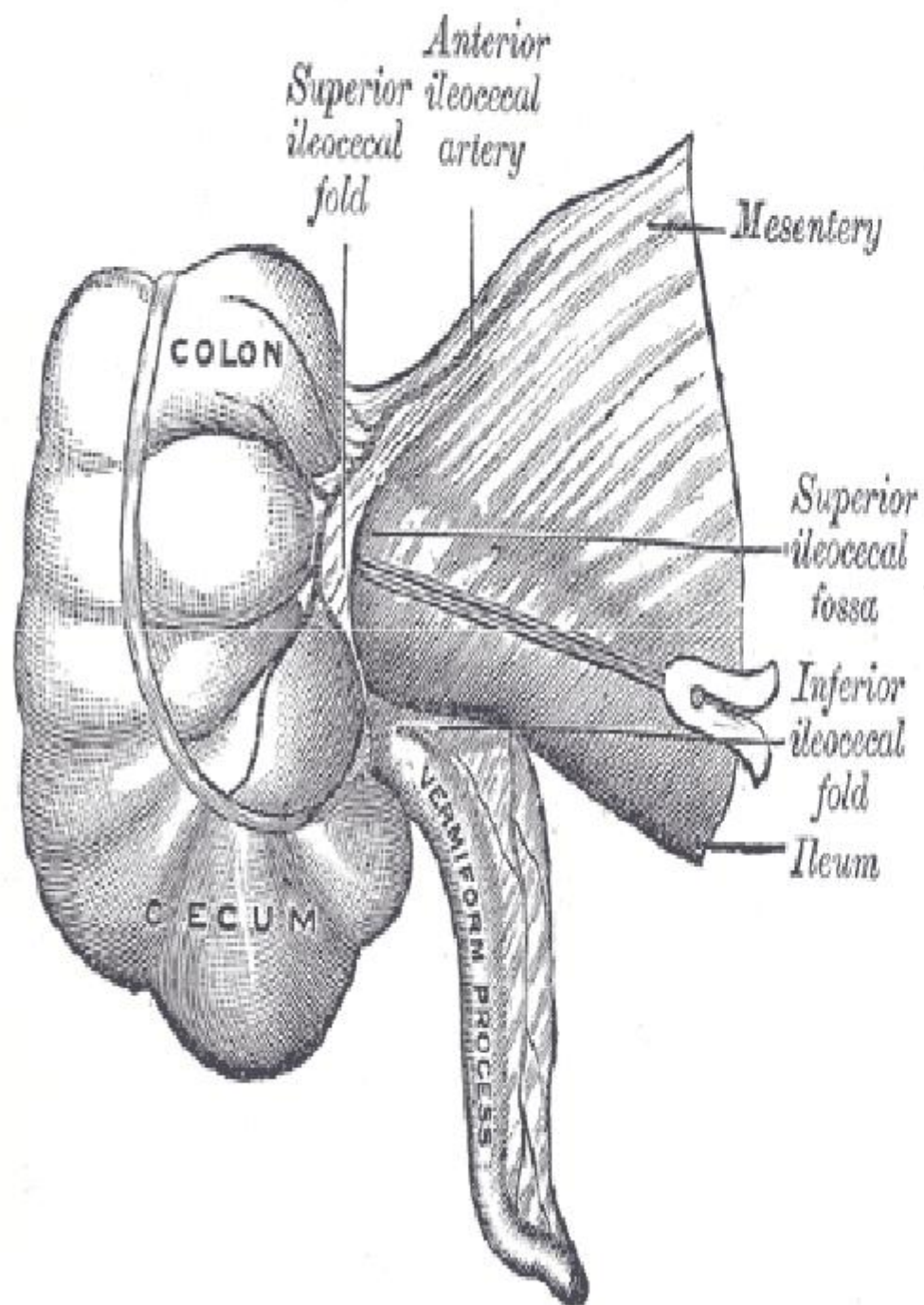


LARGE INTESTINE ANATOMY



Cecum

- It is a blind-ended pouch
- **Site:** situated in the right iliac fossa , above the lat ½ of inguinal ligament
- **Size:** It is about 3 inch in diameter
- Completely covered with peritoneum.
- It possesses a considerable amount of mobility, although it does not have a mesentery.
- Attached to :
 - Ascending colon
 - posteromedially surface is the appendix , 1 inch below ileocecal valve
 - medially Ileum
- The presence of peritoneal folds in the vicinity of the cecum creates
 - The superior ileocecal recesses
 - The inferior ileocecal recesses
 - The retrocecal recesses .



Cecum....cont

- The longitudinal muscle is restricted to three flat bands, the **taenia coli**, which converge on the base of the appendix and provide for it a complete longitudinal muscle coat .

Relations of cecum

- Anteriorly:
 - Coils of small intestine
 - the greater omentum
 - the anterior abdominal wall in the right iliac region
- Posteriorly:
 - The psoas and the iliacus muscles
 - the femoral nerve
 - and the lateral cutaneous nerve of the thigh .
 - Postero- medially The appendix is commonly retrocecal common.
- Medially:
 - Small intestine(ileum)

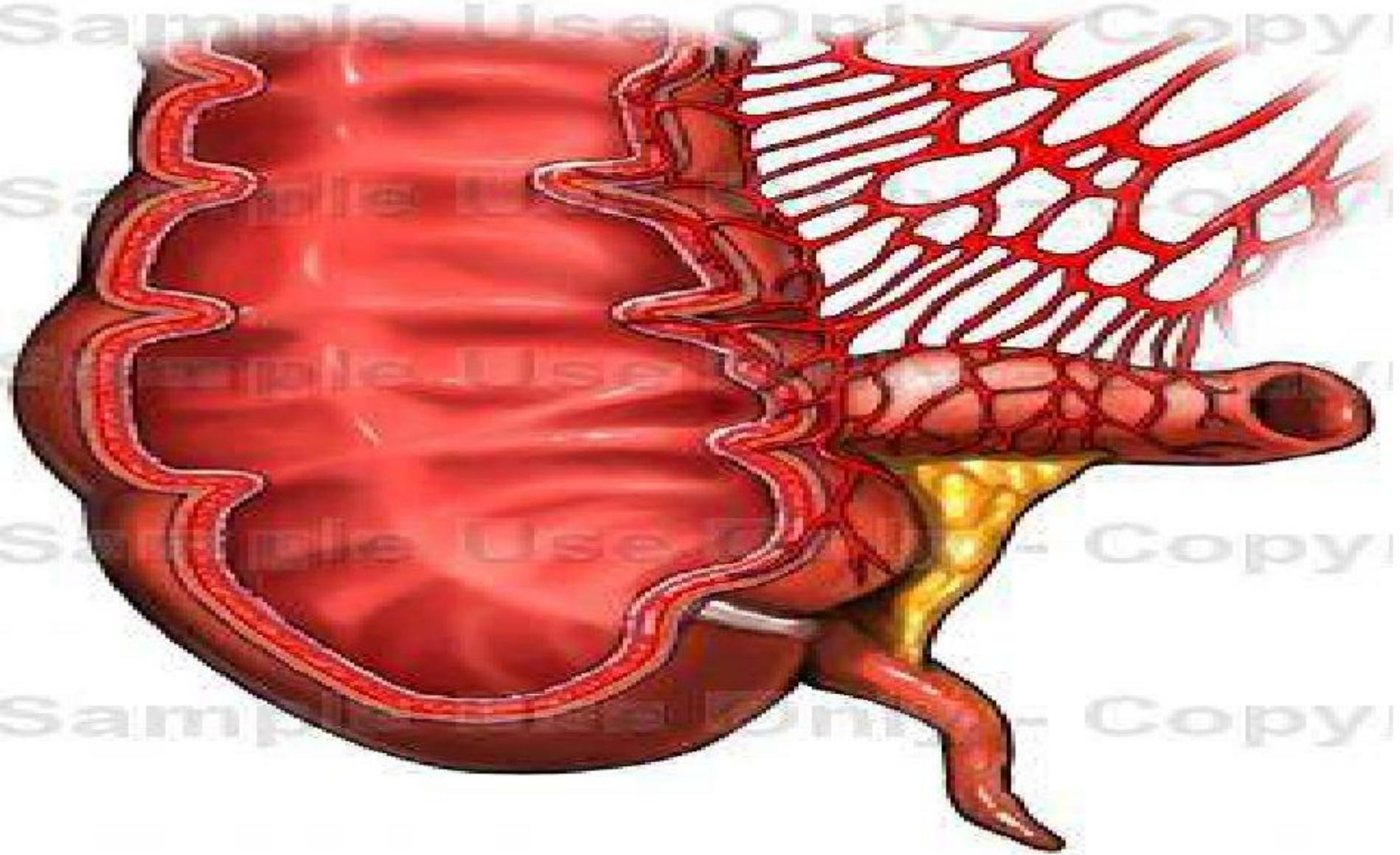
Blood Supply of cecum

Arteries

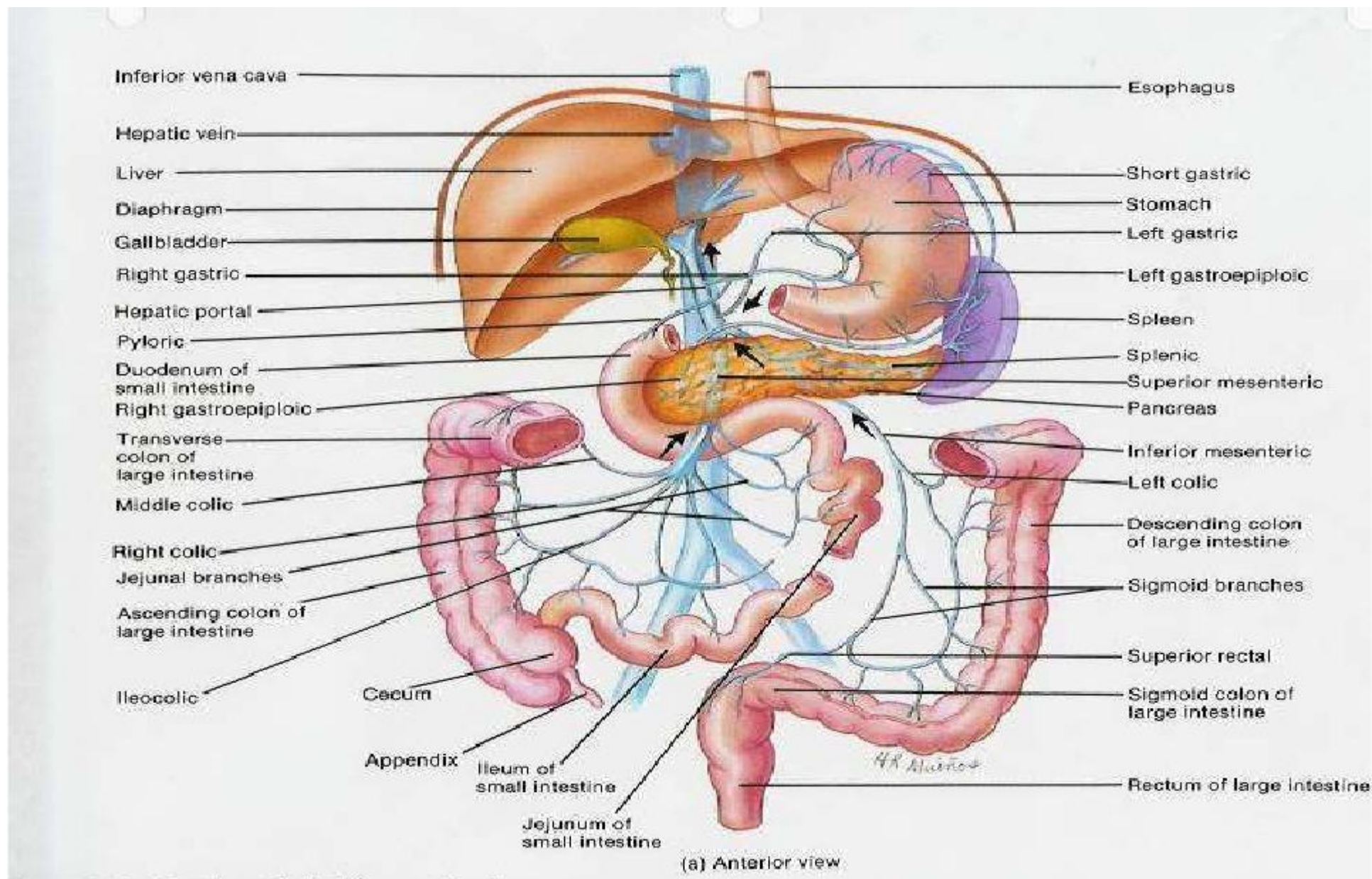
- Anterior and posterior cecal arteries a
branch of Superior mesenteric artery

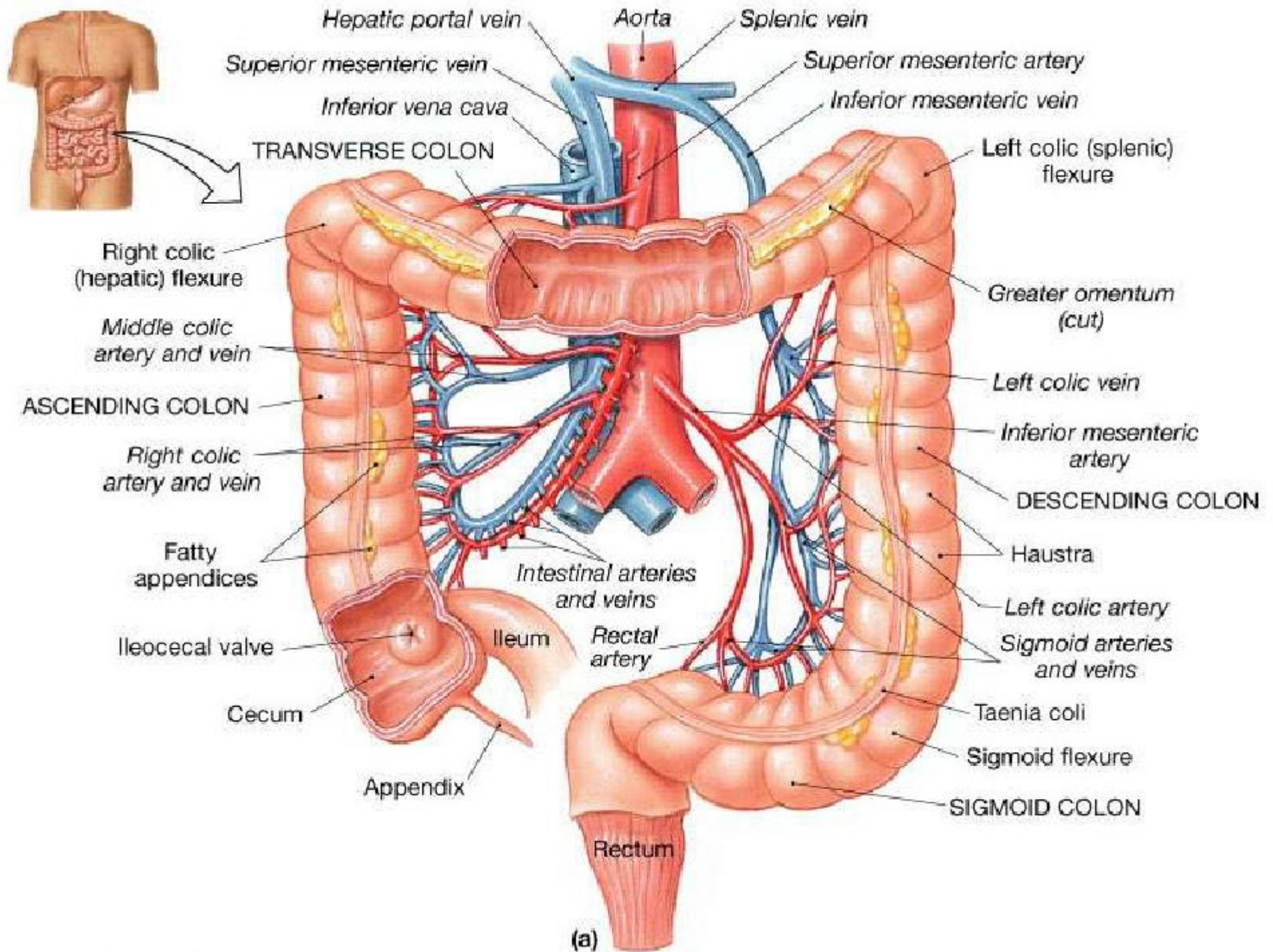
The veins correspond to the arteries and drain into the superior mesenteric vein.

Blood supply of cecum



Venous drainage of cecum





Lymphatic Drainage of cecum

- The lymph vessels pass through several mesenteric nodes finally reach the superior mesenteric nodes.

Nerve Supply of cecum

- Branches from the sympathetic and parasympathetic (vagus) nerves form the superior mesenteric plexus.

Ileocecal Valve

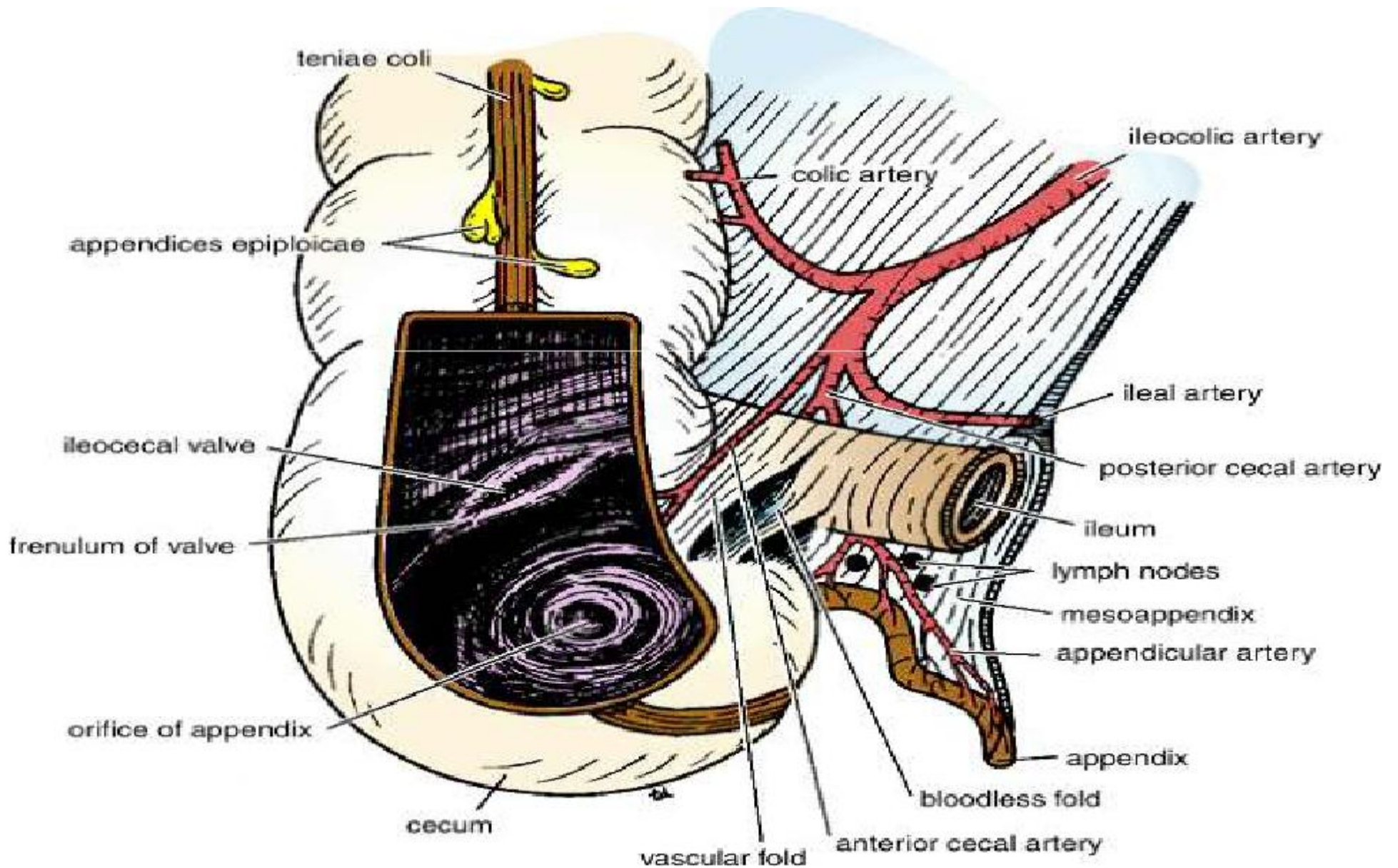
- A rudimentary structure
- consists of two horizontal folds of mucous membrane
- Project around the orifice of the ileum.
- The valve plays little or no part in the prevention of reflux of Cecal contents into the ileum.
- The circular muscle of the lower end of the ileum (called the ileocecal sphincter by physiologists) serves as a sphincter and controls the flow of contents from the ileum into the colon.
- The smooth muscle tone is reflexly increased when the cecum is distended; the **gastrin hormone**, which is produced by the stomach, causes relaxation of the muscle tone.

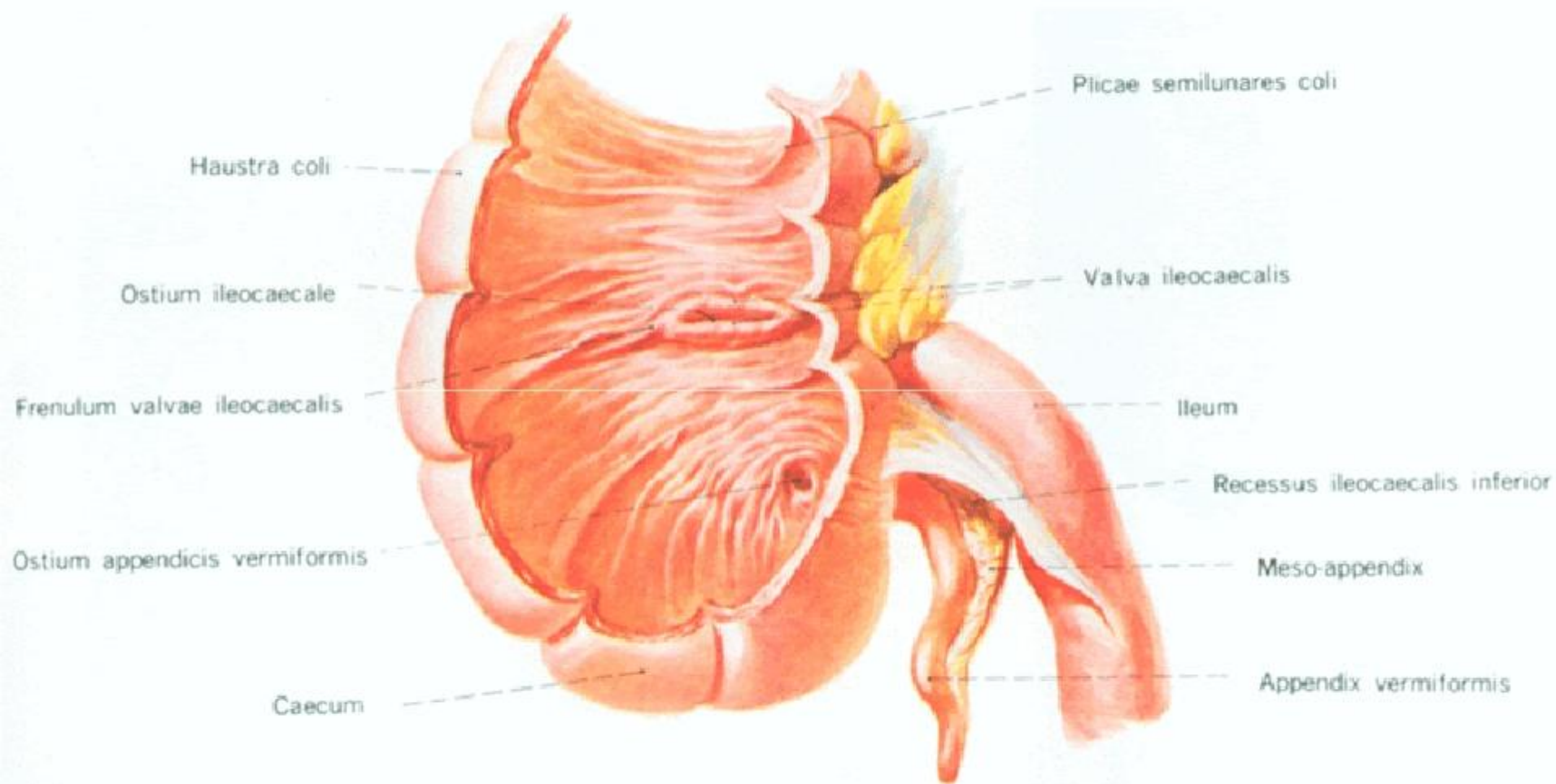
Appendix

Location and Description:

- It is a narrow, muscular tube
- containing a large amount of lymphoid tissue.
- It varies in length from 3 to 5 inch. (2 -22 cm).
- The base is attached to the posteromedial surface of the cecum about 1 inch. (2.5 cm) below the ileocecal junction .
- The remainder of the appendix is free.
- **Peritoneum:**
 - It has a complete peritoneal covering, which is attached to the mesentery of the small intestine by a short mesentery of its own, **the mesoappendix.**
 - The mesoappendix contains the appendicular vessels and nerves.

APPENIX





Appendix....cont

- **Position**

- The appendix lies in the right iliac fossa, and in relation to the anterior abdominal wall
 - 1- Retrocecal in retrocaecal recess behind cecum in 74% of people
 - 2- pelvic: in pelvis related to Rt. Ovary and uterine tube in 21% of people
 - 3- Subcaecal: below cecum in 3.5%
 - 4- Preileal: in front of ileum 1%
 - 5- Postileal: behind the ileum 0.5%

- **~~Surface anatomy of appendix=~~ McBurney's point**

- Its base is situated one third of the way up the line joining the right anterior superior iliac spine to the umbilicus
- To reach the appendix during operation follow the taenia coli which converge toward the appendix

Blood Supply of appendix

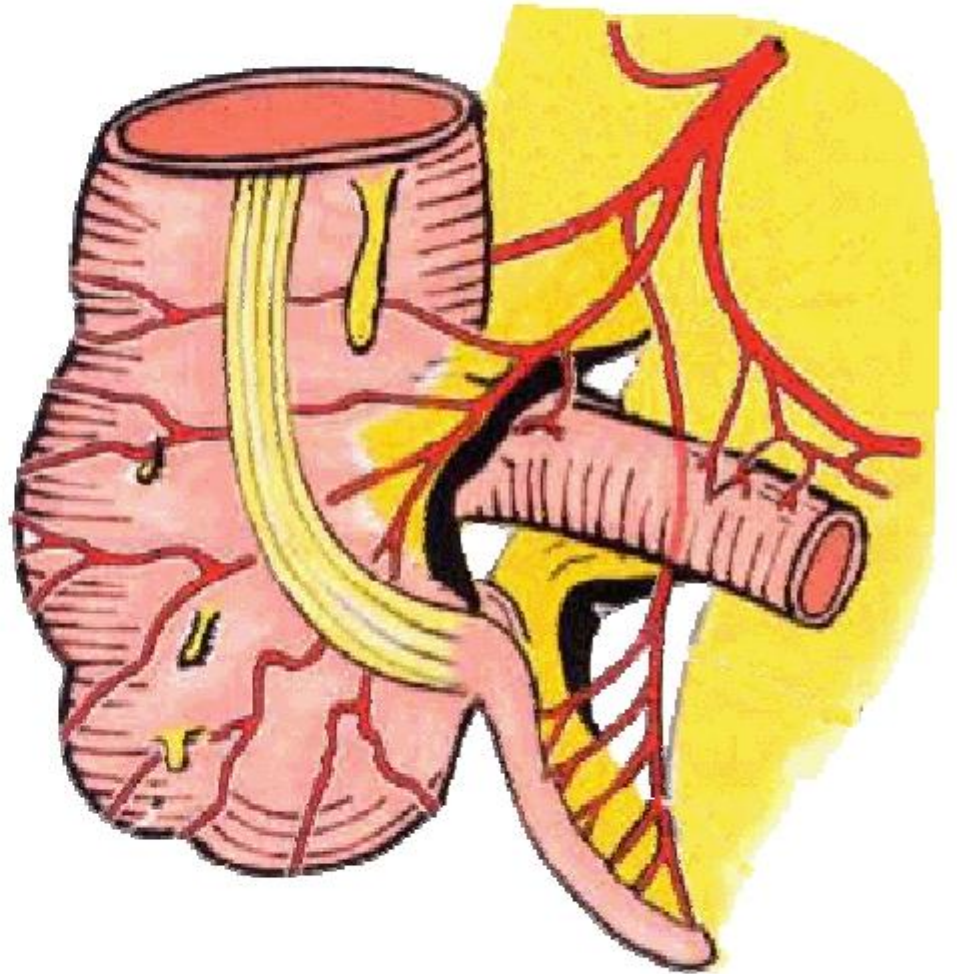
Arteries

- The appendicular artery is a branch of the posterior cecal artery(ilio-cecal.a)which descends behind the ileum.

Veins

- The appendicular vein drains into the posterior cecal vein.

- **Appendicular artery** runs in free margin of the mesoappendix



Lymphatic Drainage of appendix

- The lymph vessels drain into one or two nodes lying in the mesoappendix eventually into the superior mesenteric nodes.

Nerve Supply of appendix

- The appendix is supplied by the sympathetic and parasympathetic (vagus) nerves from the superior mesenteric plexus.
- Afferent nerve fibers concerned with the conduction of visceral pain from the appendix accompany the sympathetic nerves and enter the spinal cord at the level of the 10th thoracic segment.
- The peritoneum over the appendix is innervated by the 10th intercostal nerve= **skin of umbilicus**

Clinical notes

- Acute appendetitis uncommon in the two extremes of life
- Thrombosis of appendicular .a
gangrene(just one artery for appendix)
perforation Lt.paracolic gutter while in
Acute cholecystitis no gangrene(more than
one artery supply the gallbladder)
- Appendiectomy

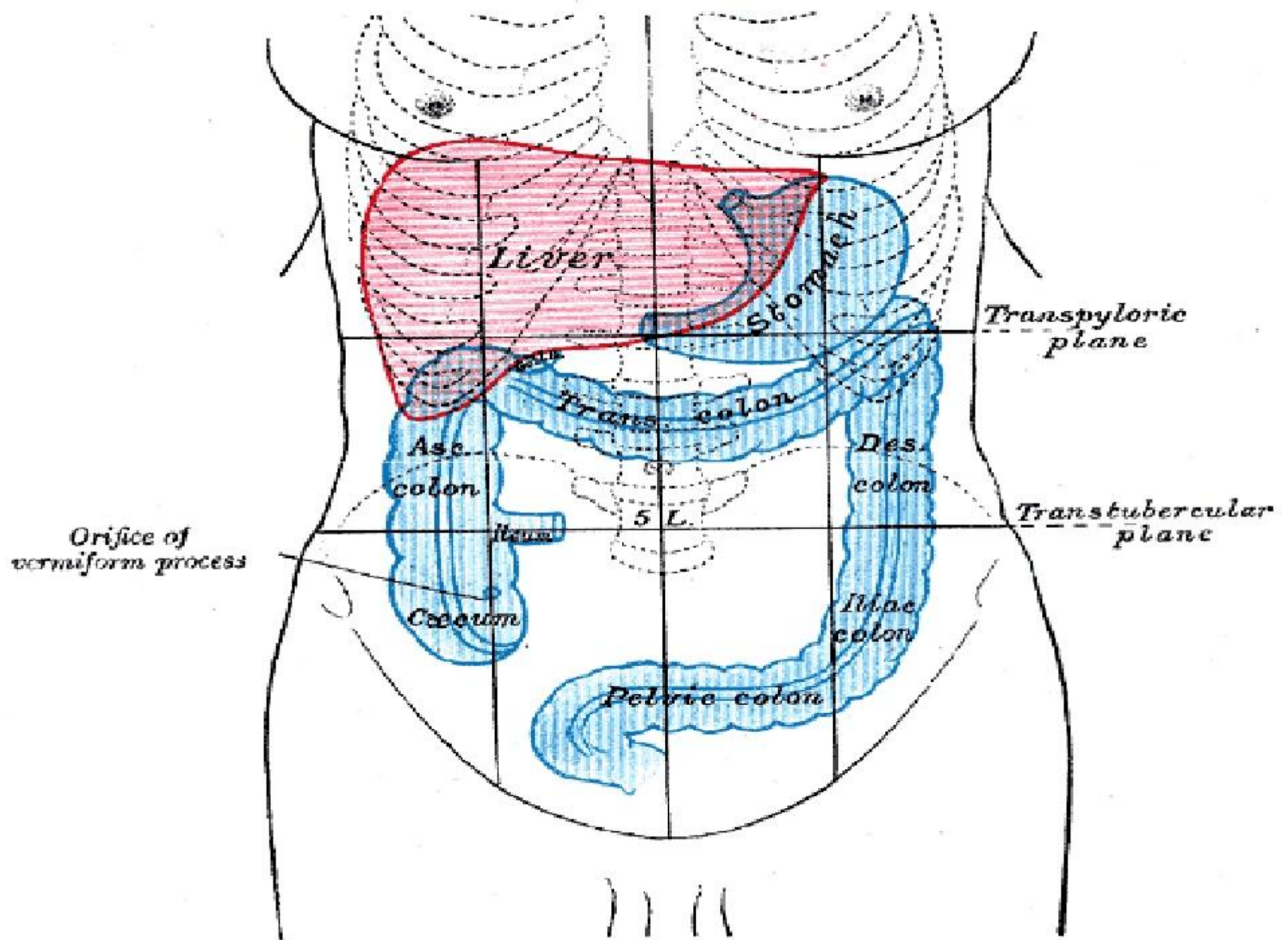
Ascending Colon

Location and Description:

- The ascending colon is about 5 inch. (13 cm) long
- lies in the right lower quadrant.
- It extends upward from the cecum to the inferior surface of the right lobe of the liver, where it turns to the left, **forming the right colic flexure**
- Then becomes continuous with the transverse colon.
- Taenia coli, sacculations & appendices epiploica are present

The peritoneum

- Covers the front and the sides of the ascending colon
- Binding it to the posterior abdominal wall.



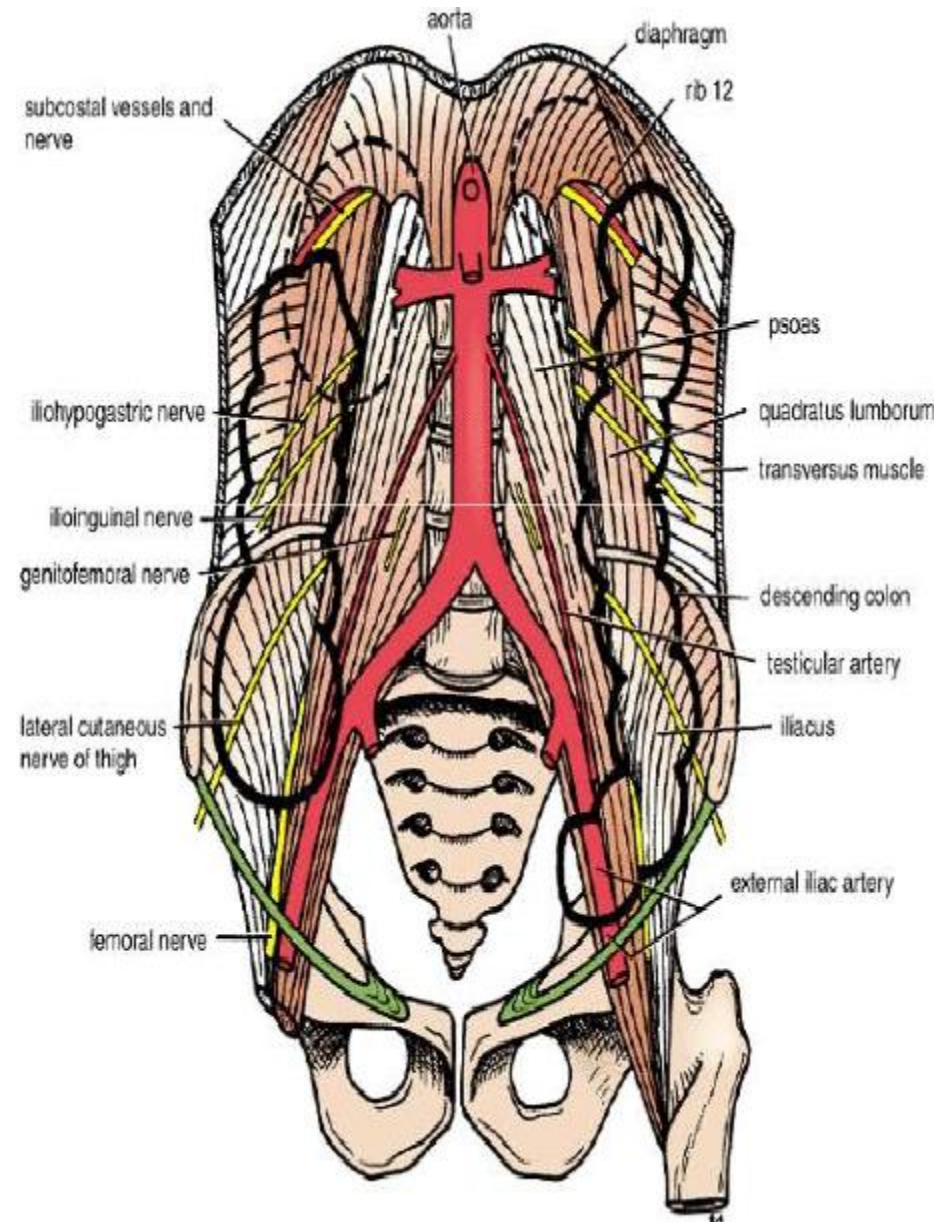
Relations of ascending colon

- **Anteriorly:**

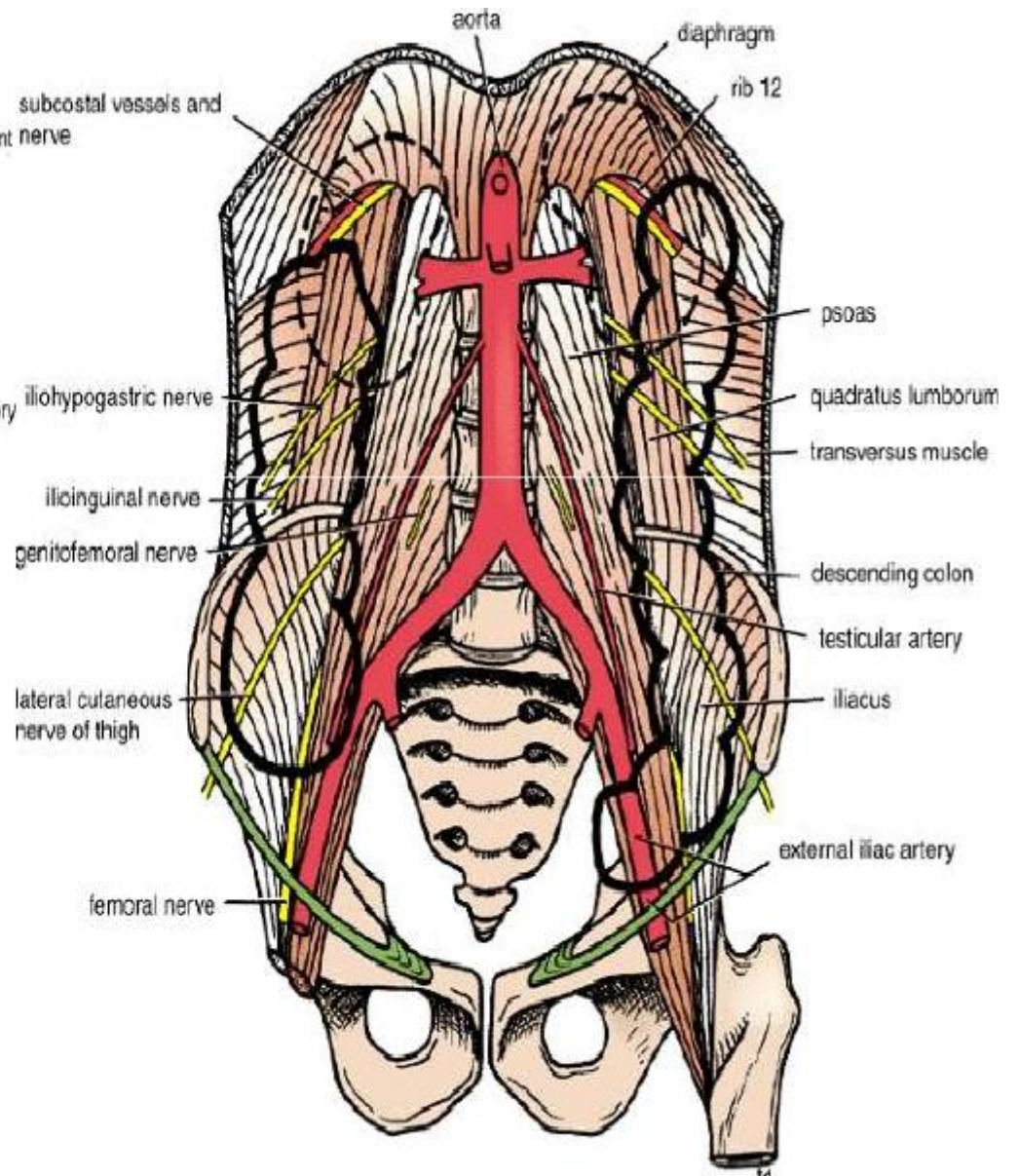
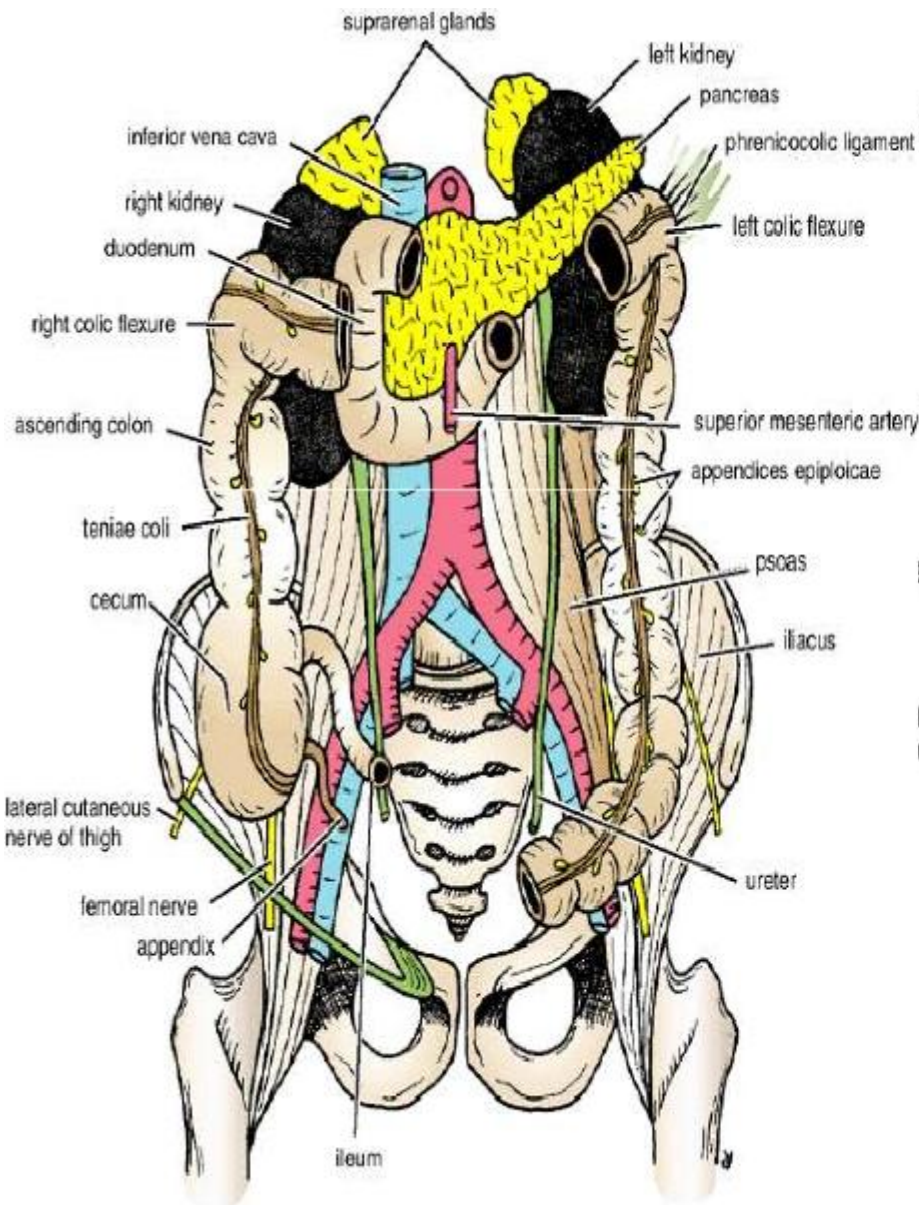
- Coils of small intestine
- The greater omentum
- The anterior abdominal wall

- **Posteriorly:**

- The iliacus
- The iliac crest
- The quadratus lumborum
- The origin of the transversus abdominis muscle,
- The lower pole of the right kidney.
- The iliohypogastric .n
- The ilioinguinal nerves cross behind it .



Relations of ascending colon



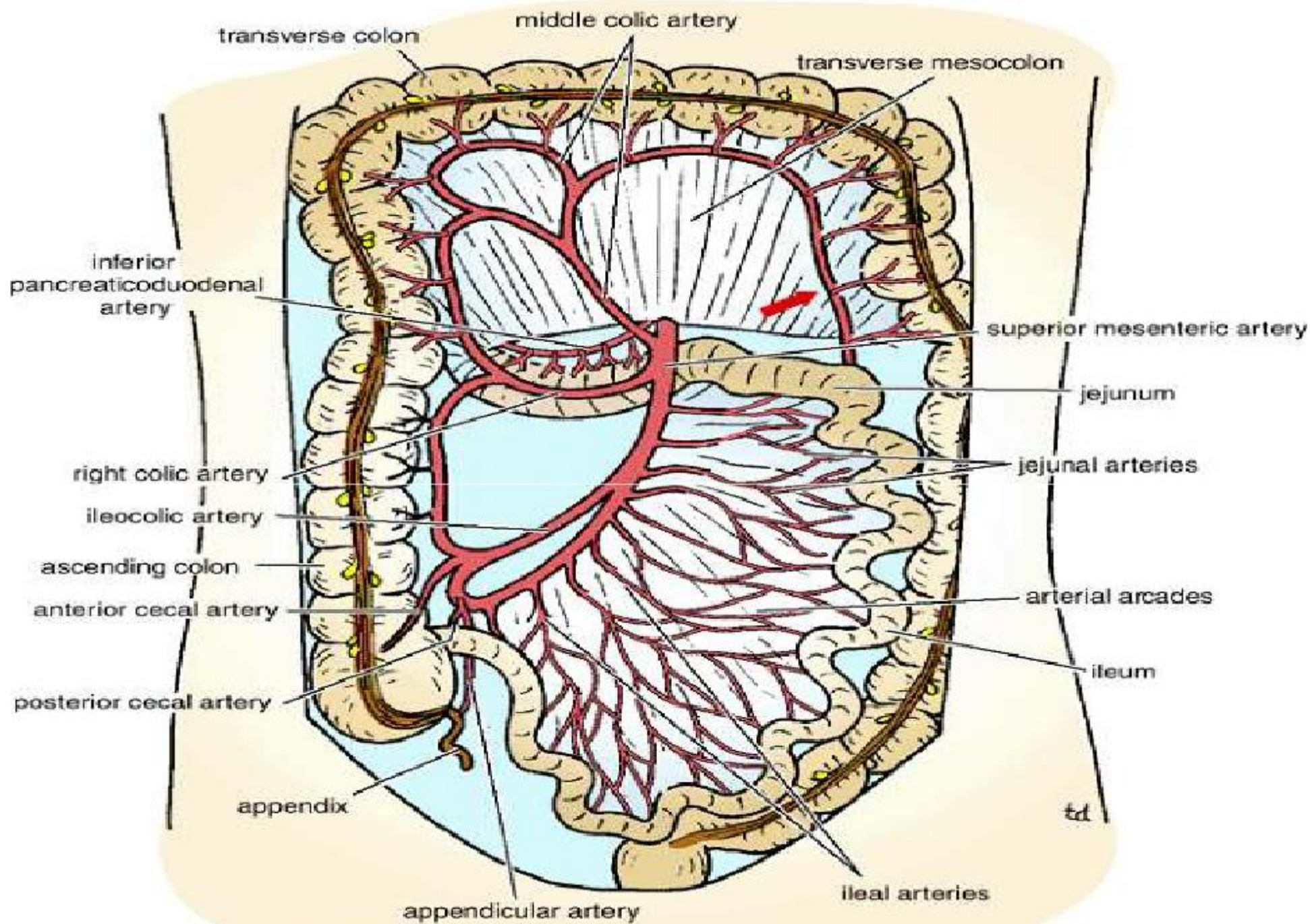
Blood Supply of Ascending colon

Arteries

- The ileocolic & right colic branches of the **superior mesenteric artery** supply this area.

Veins

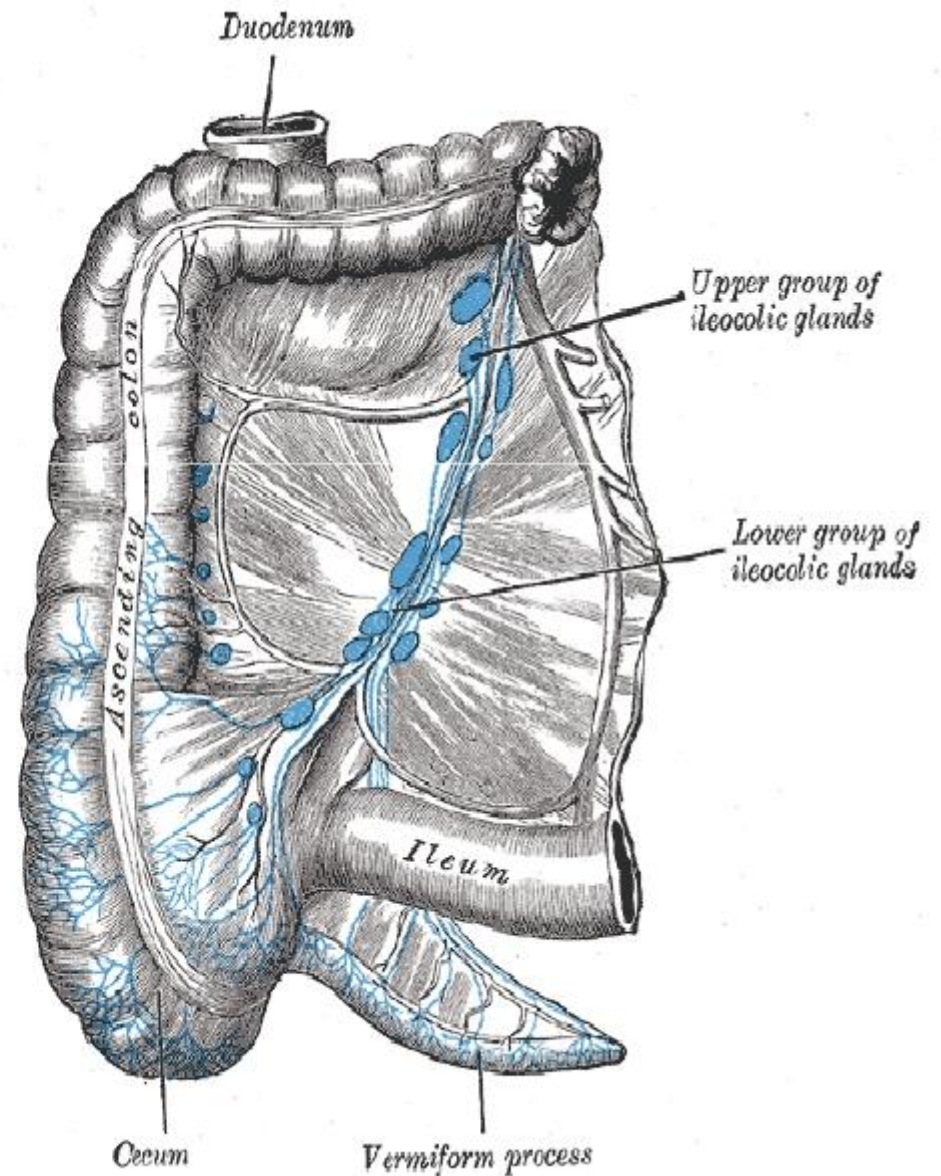
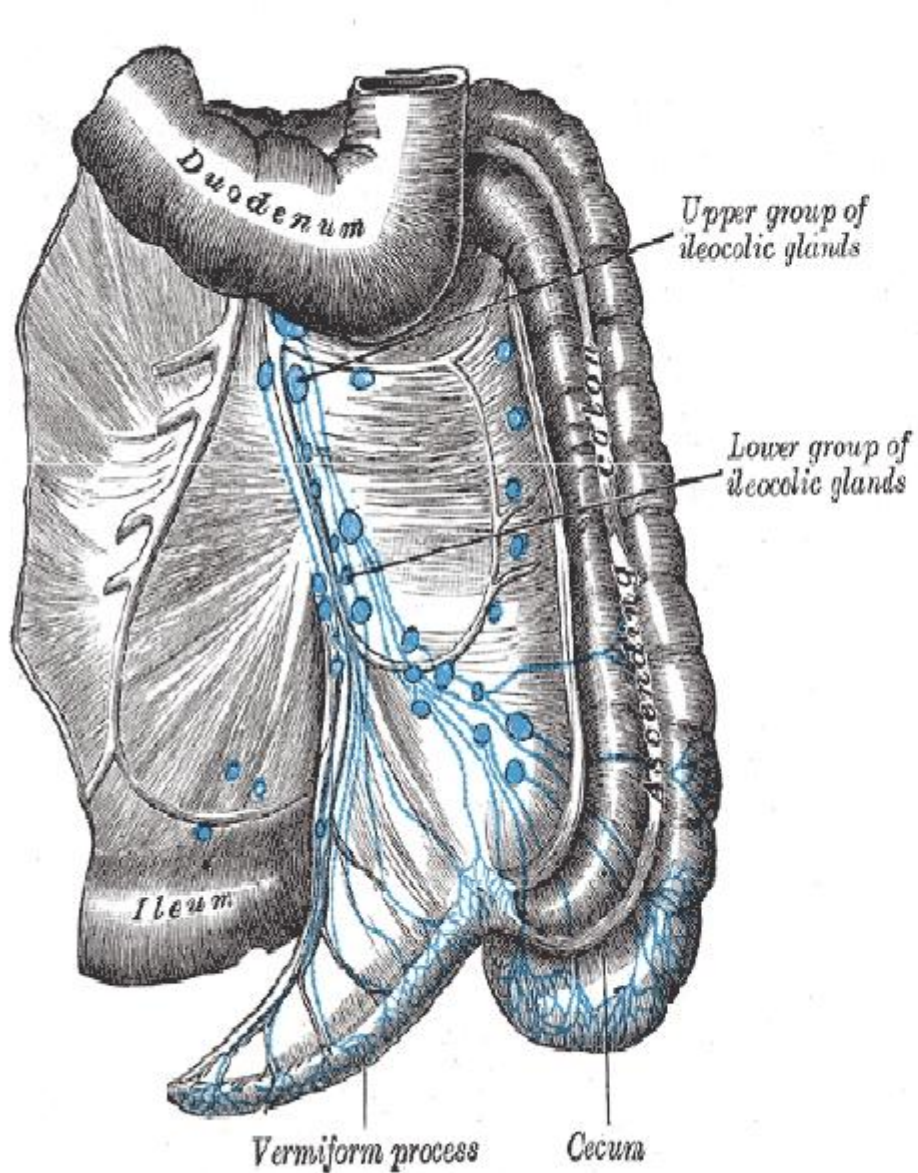
- The veins correspond to the arteries and drain into the superior mesenteric vein.



Lymphatic drainage of Ascending colon

- The lymphatic vessels lymph nodes lying along the course of the colic blood vessels the superior mesenteric nodes.

Lymphatic drainage



Nerve Supply of ascending colon

- Sympathetic and parasympathetic (vagus) nerves from the superior mesenteric plexus .

Transverse colon

Transverse Colon

Location and Description

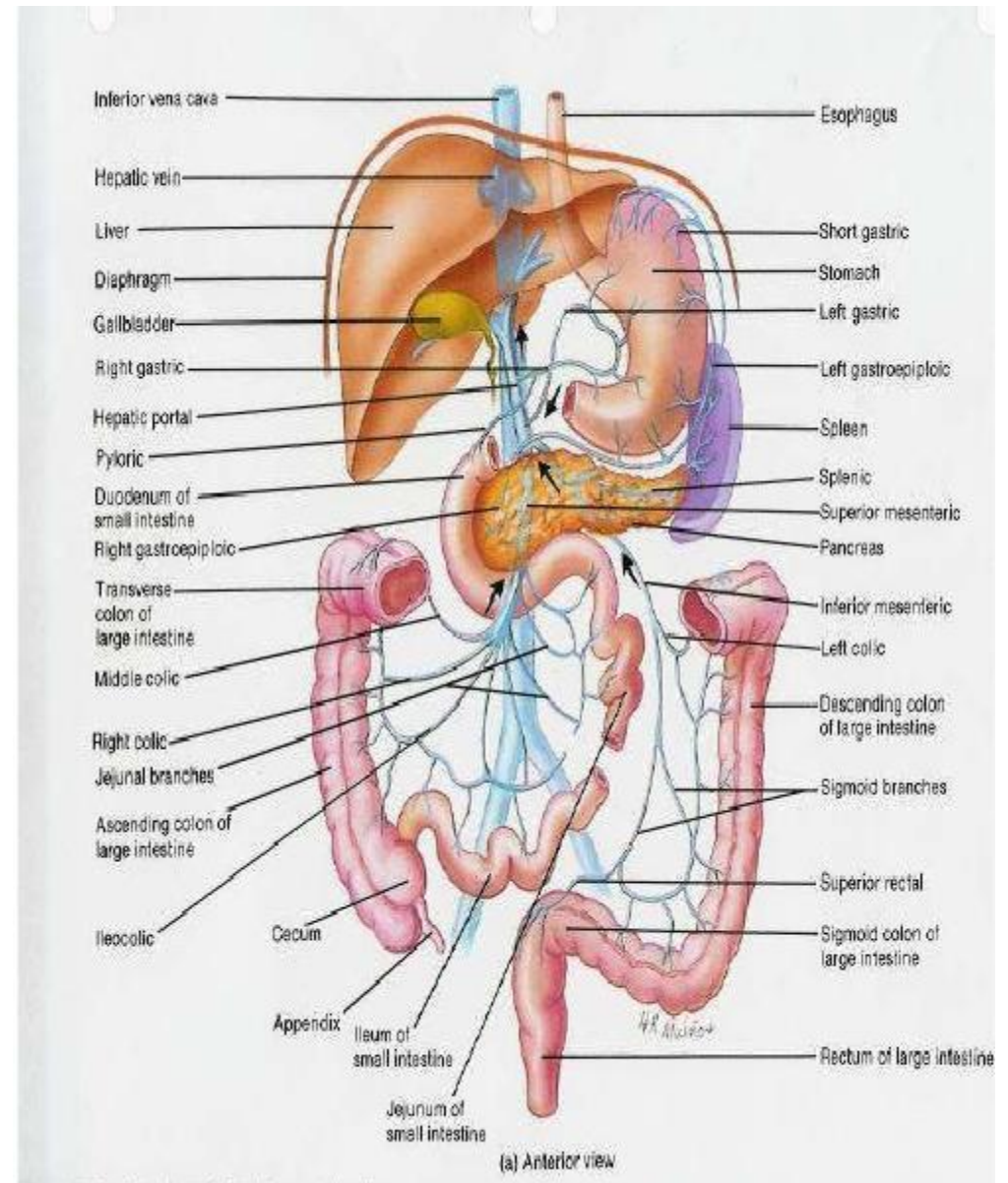
- The transverse colon is about 15 in. (38 cm) long
- extends across the abdomen
- occupying the umbilical region.
- It begins at the right colic flexure below the right lobe of the liver
- Hangs downward
- Suspended by the transverse mesocolon from the pancreas
- It then ascends to the left colic flexure below the spleen.
- The left colic flexure is higher than the right colic flexure and is suspended from the diaphragm by **the phrenicocolic ligament** .
- Taenia coli, sacculations & appendices epiploica are present

The transverse mesocolon= mesentery of the transverse colon

- suspends the transverse colon from the anterior border of the pancreas .
- The mesentery is attached to the superior border of the transverse colon
- The posterior layers of the greater omentum are attached to the inferior border .
- The position of the transverse colon is extremely variable and may sometimes reach down as far as the pelvis.

Relations of Transverse colon

- **Anteriorly:**
 - The greater omentum
 - The anterior abdominal wall (umbilical and hypogastric regions)
- **Posteriorly:**
 - The second part of the duodenum
 - The head of the pancreas
 - The coils of the jejunum and ileum



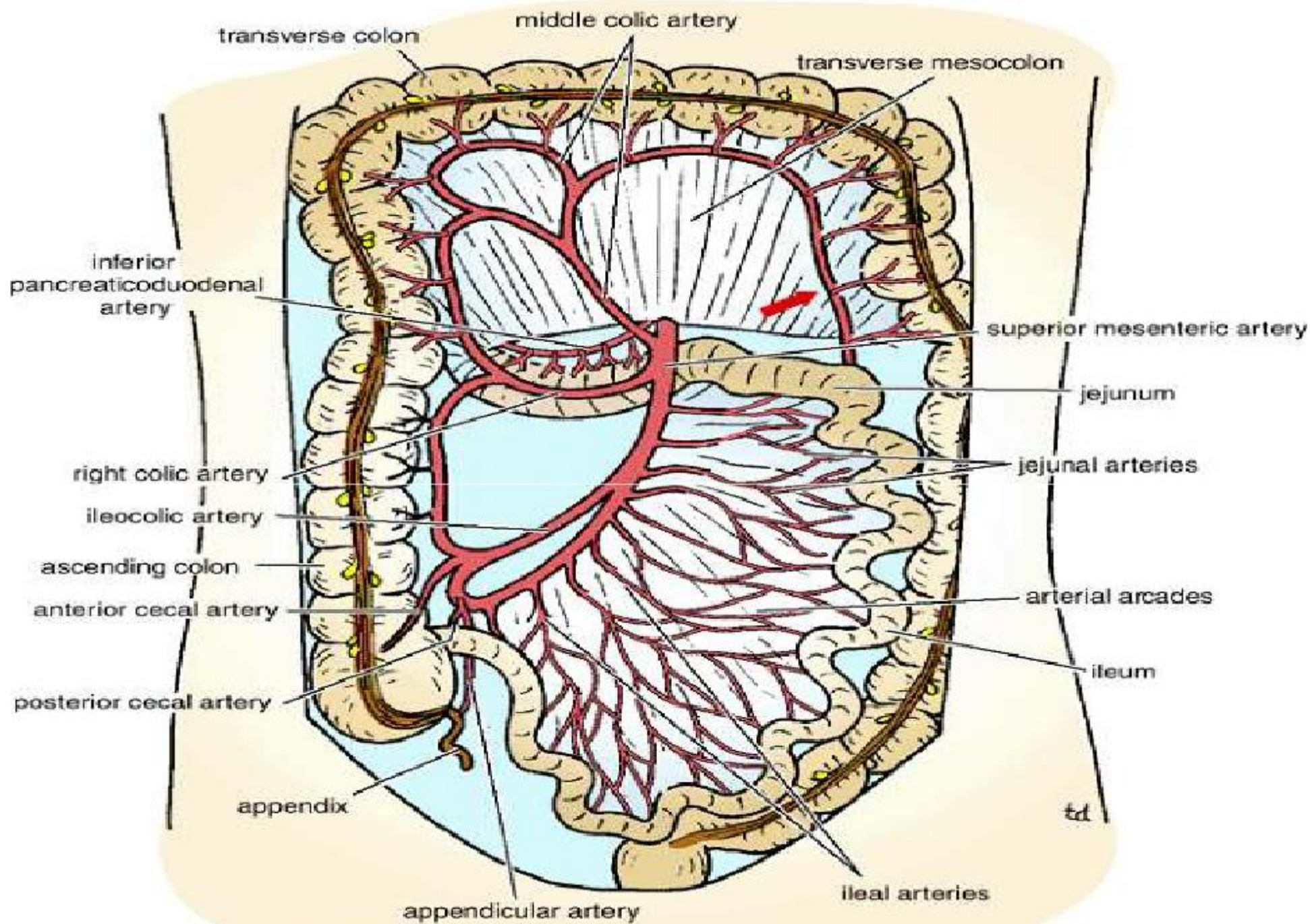
Blood Supply of transverse colon

- **Arteries:**

- The proximal two thirds are supplied by the middle colic artery a branch of the superior mesenteric artery.
- The distal third is supplied by the left colic artery a branch of the inferior mesenteric artery .

Veins

- The veins correspond to the arteries and drain into the superior & inferior mesenteric veins.



Lymphatic Drainage of transverse colon

- The proximal two thirds drain the colic nodes and then into the superior mesenteric nodes
- The distal third drains the colic nodes the inferior mesenteric nodes.

Nerve Supply of transverse colon

- The proximal two thirds are innervated by sympathetic and vagal nerves through the **superior mesenteric plexus**
- The distal third is innervated by sympathetic and parasympathetic pelvic splanchnic nerves through **the inferior mesenteric plexus.**

Descending Colon

Location and Description:

- The descending colon is about 10 in. (25 cm) long
- It extends downward from the left colic flexure, to the pelvic brim, where it becomes continuous with the sigmoid colon.
- Taenia coli, sacculations & appendices epiploica are present
- **The peritoneum**
 - Covers the front and the sides and binds it to the posterior abdominal wall.

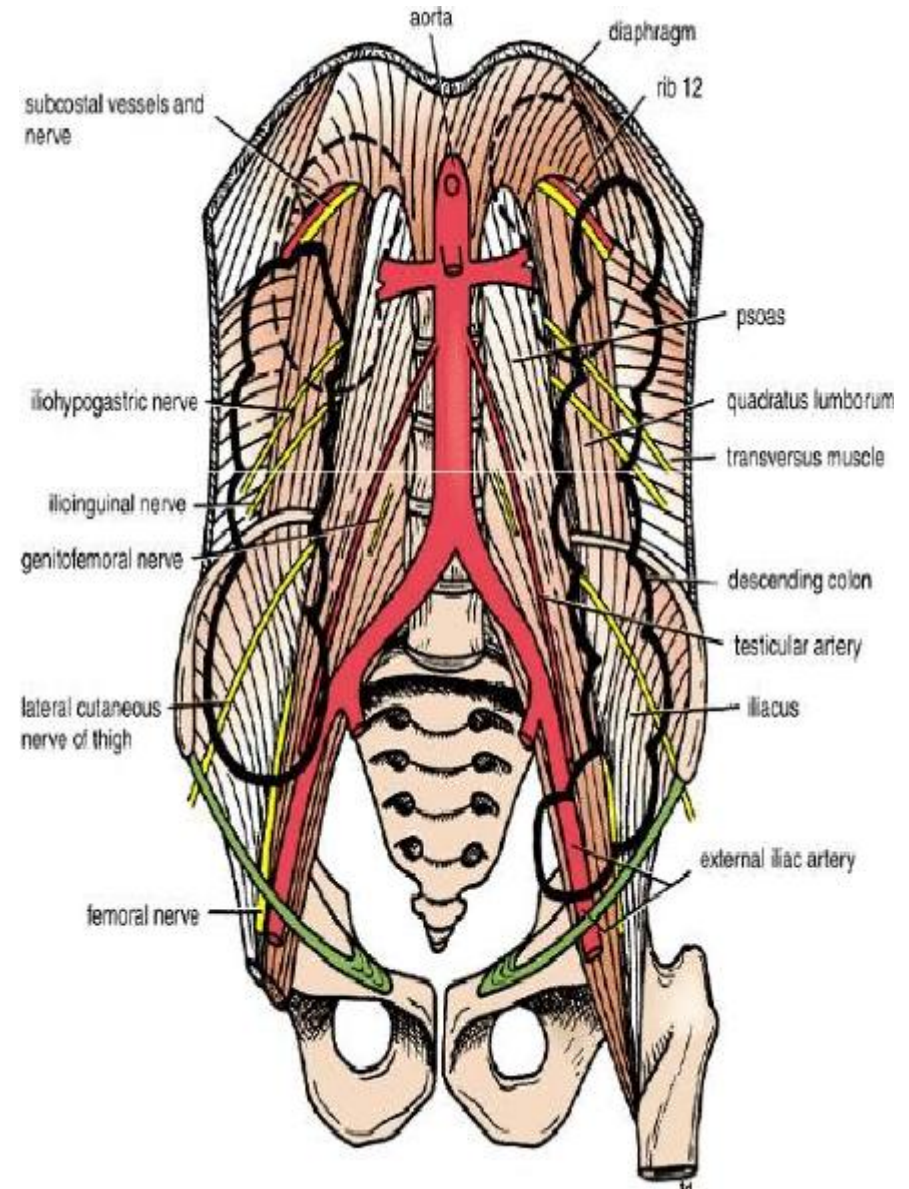
Relations of Descending colon

- **Anteriorly:**

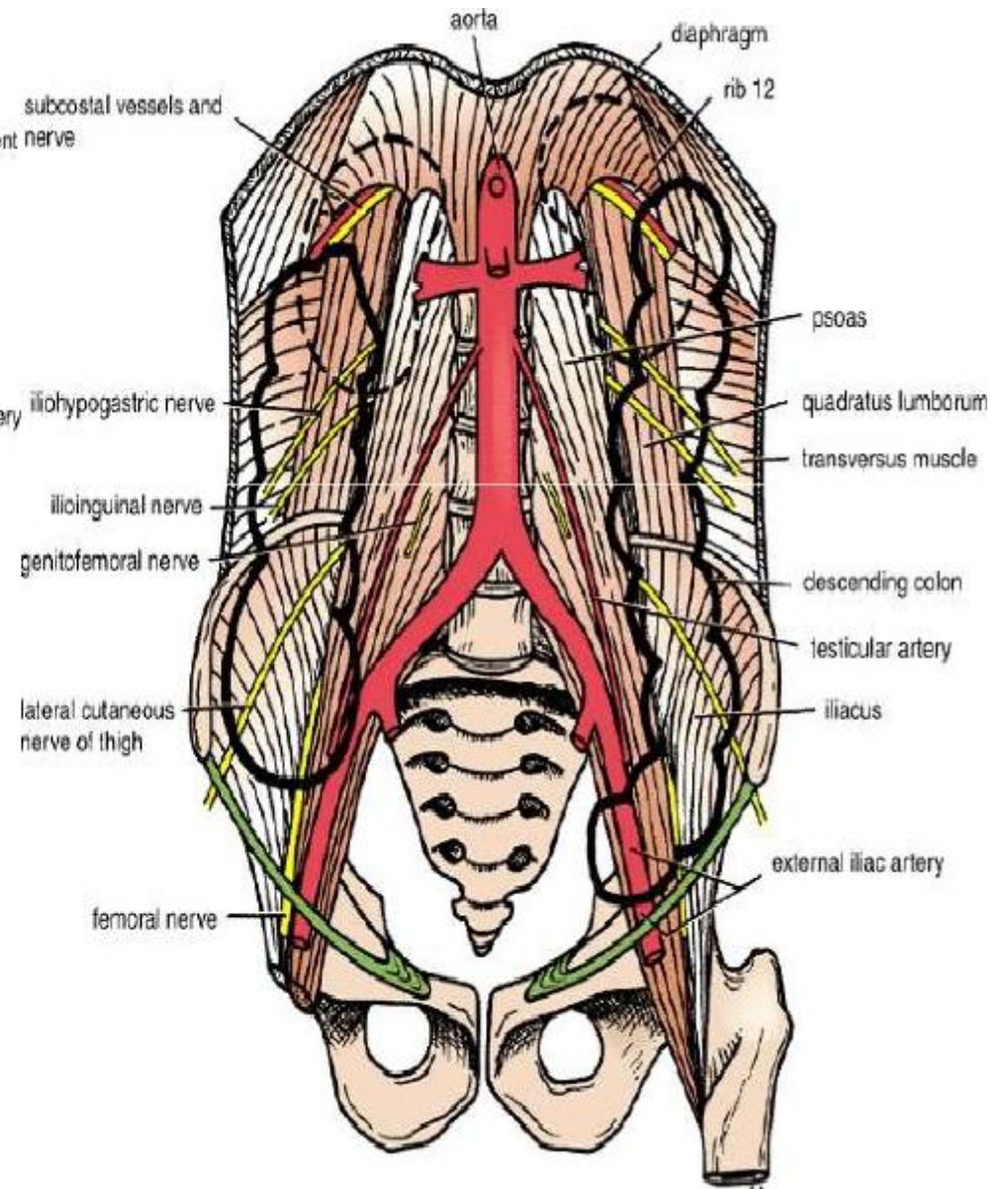
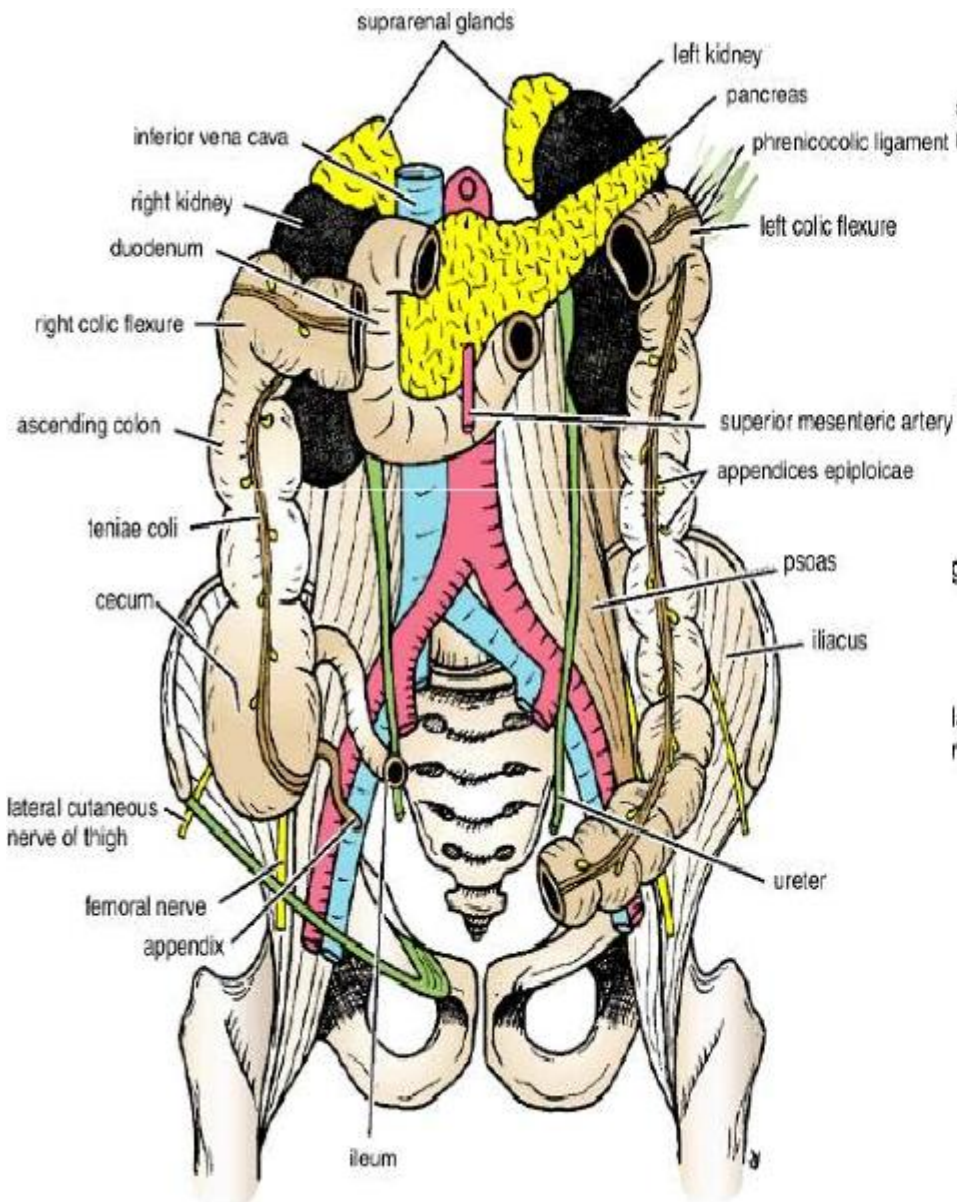
- Coils of small intestine
- the greater omentum
- the anterior abdominal wall

- **Posteriorly:**

- The lateral border of the left kidney
- the origin of the transversus abdominis muscle
- the quadratus lumborum
- the iliac crest
- the iliacus
- the left psoas
- The iliohypogastric and the ilioinguinal nerves
- the lateral cutaneous nerve of the thigh
- the femoral nerve



Relations of Descending colon



Blood Supply of Descending colon

- **Arteries**

- The left colic and the sigmoid branches of the inferior mesenteric artery.

- **Veins**

- The veins correspond to the arteries drain into the inferior mesenteric vein.

Lymphatic Drainage of descending colon

- Lymphatic drains the colic lymphatic nodes & the inferior mesenteric nodes around the origin of the inferior mesenteric artery.

Nerve Supply of descending colon

- The nerve supply is the sympathetic and parasympathetic pelvic
- Splanchnic nerves through the inferior mesenteric plexus