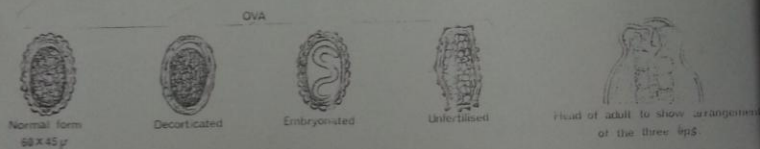
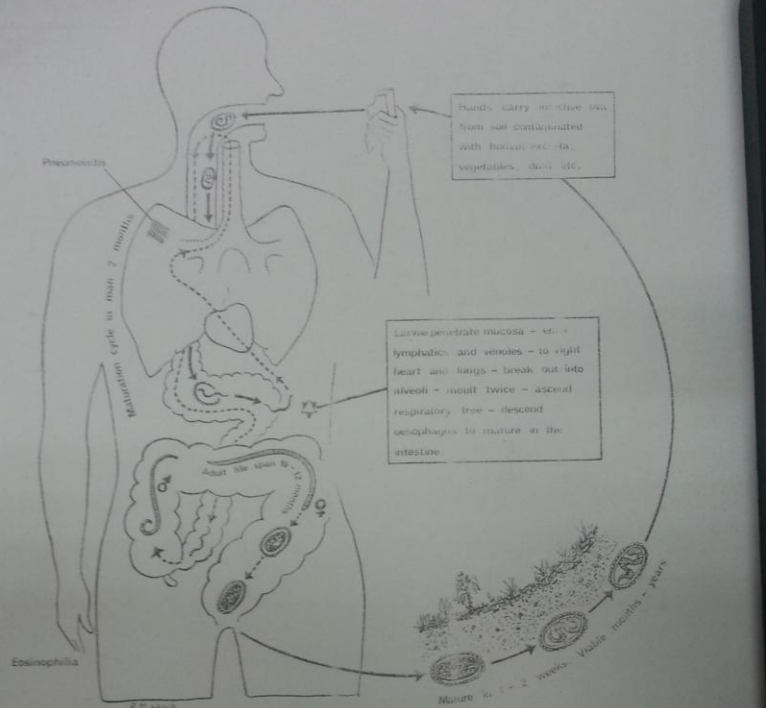


Ascaris lumbricoides (The round worm)

PL 511



Geographical distribution : World wide.

ADULTS

150 - 200 X 2 - 4 mm.

200 - 350 X 1 - 5 mm.

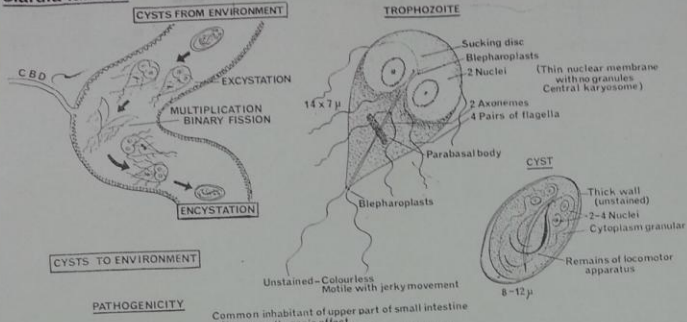
PATHOLOGY

LARVAE Allergy, eosinophilia and pneumonitis. Occasionally ectopic larvae in other organs with local inflammation and necrosis.

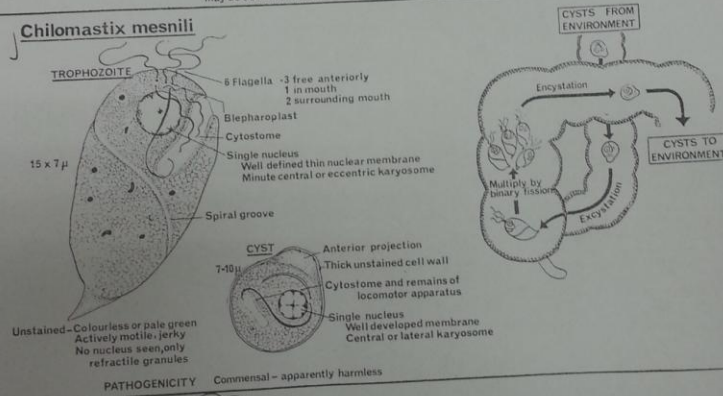


The Intestinal Flagellates

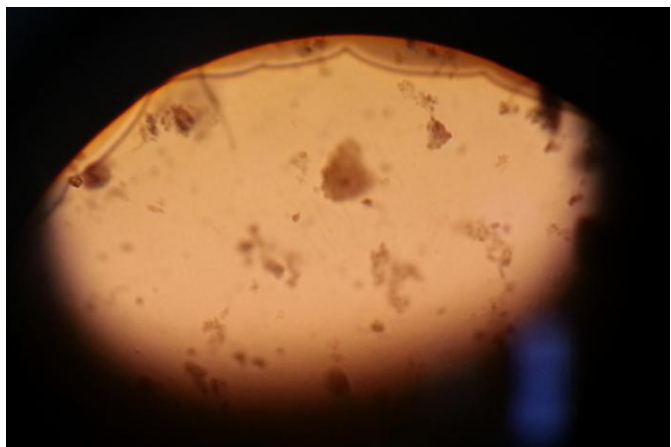
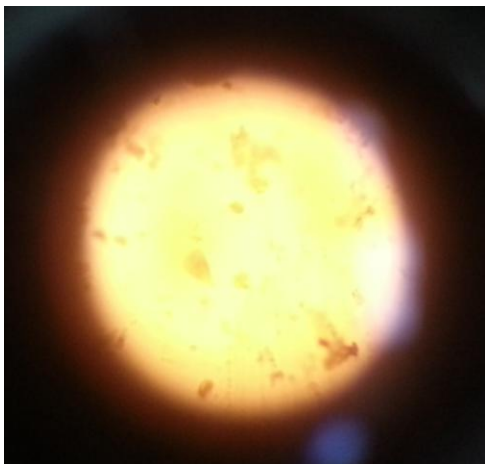
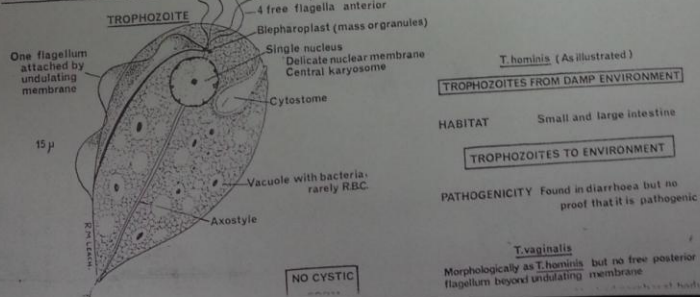
Giardia lamblia



Chilomastix mesnili



Trichomonas spp.

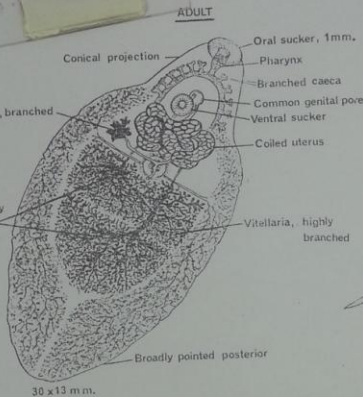


Trematoda (cont.)

FAMILY FASCIOLIDAE

Fasciola hepatica

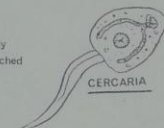
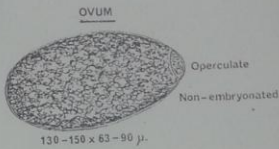
(The sheep liver fluke)



O
T
T

Testes, markedly branched

Life cycle } See plate 24.
Pathology }
Occurrence }



Fasciola gigantica

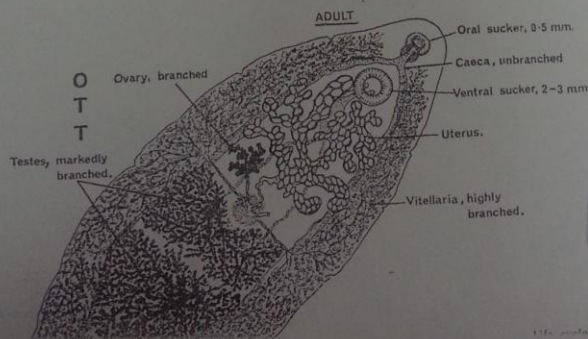
(The giant liver fluke)

Similar to *F. hepatica* somewhat larger eggs. 160-190 x 70-90 μ.

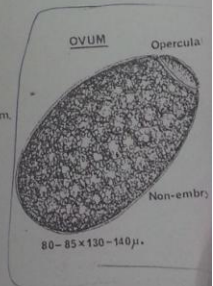
Occurrence In herbivores in Africa and Far East.
Occasionally described in man.

Fasciolopsis buski

(The large intestinal fluke)

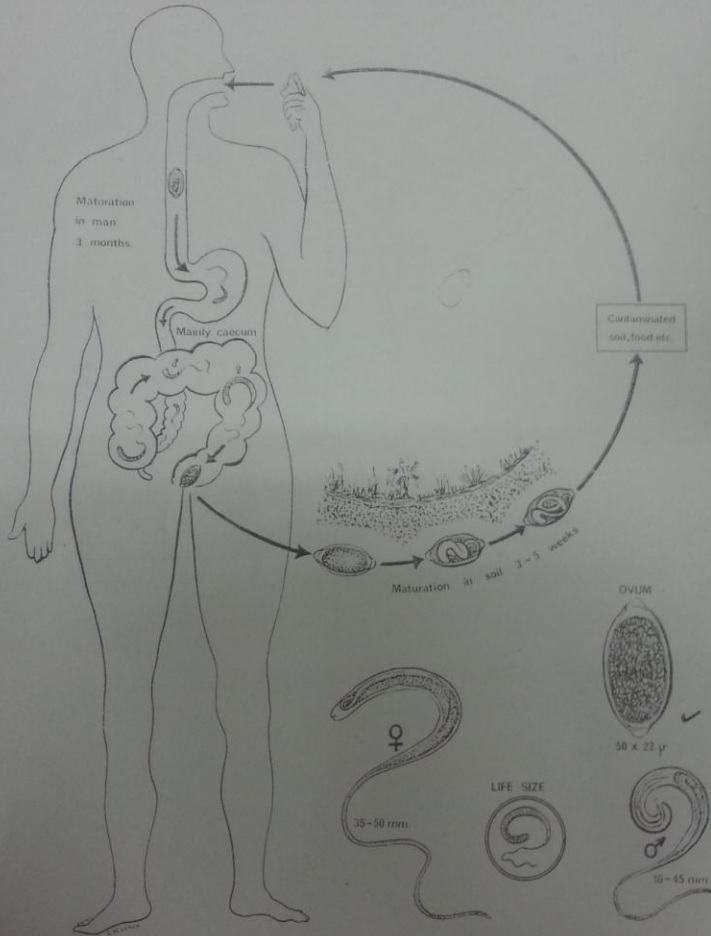


O
T
T



Trichuris trichiura (The Whip worm)
Syn. *Trichocephalus trichiura*.

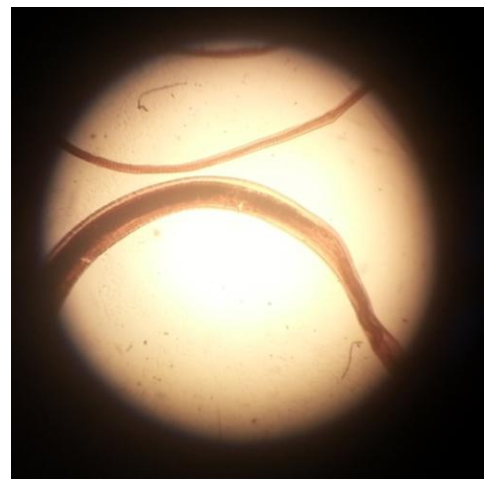
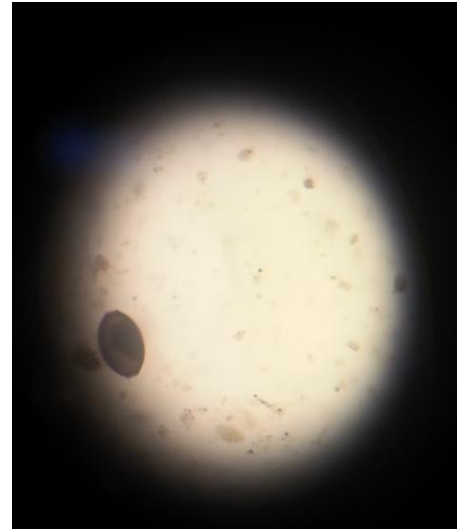
(PLATE 1)

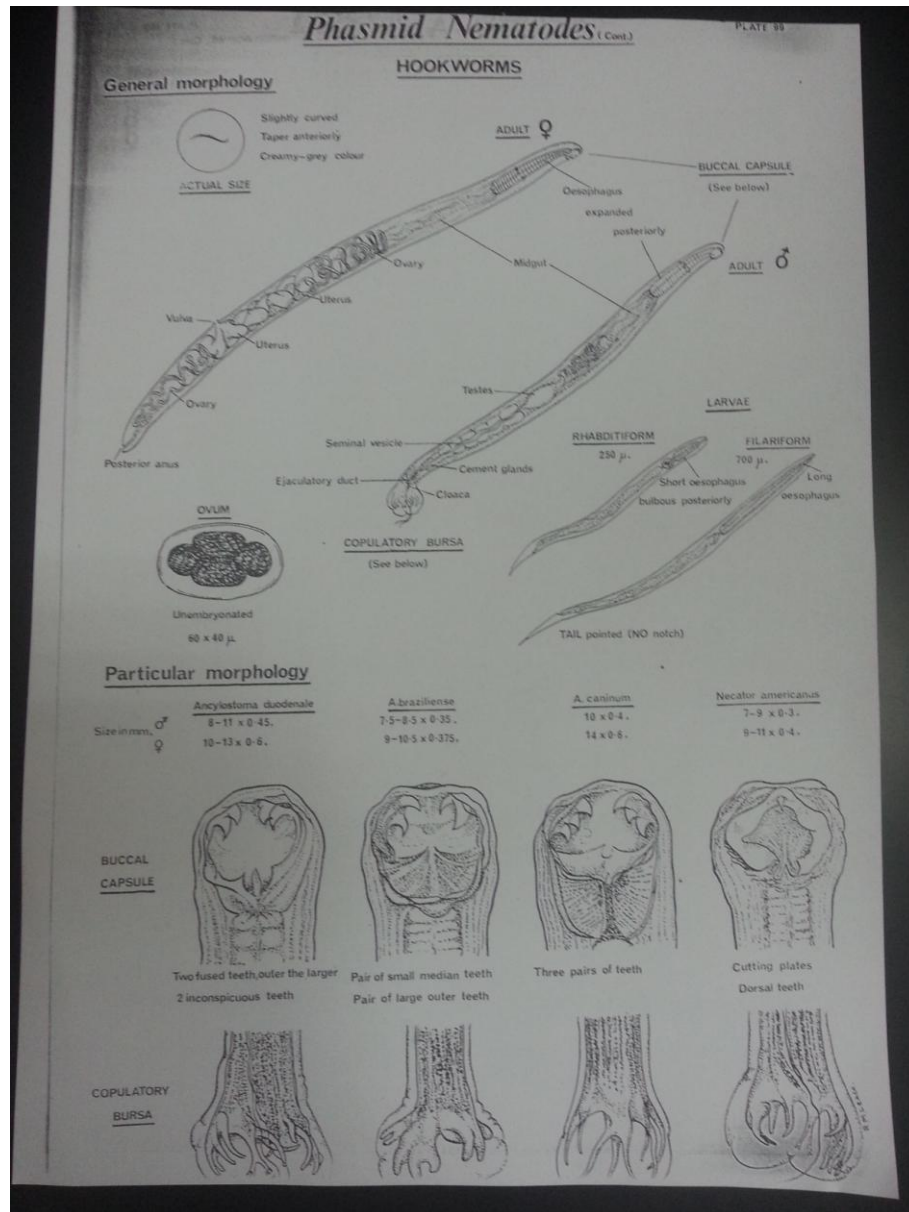


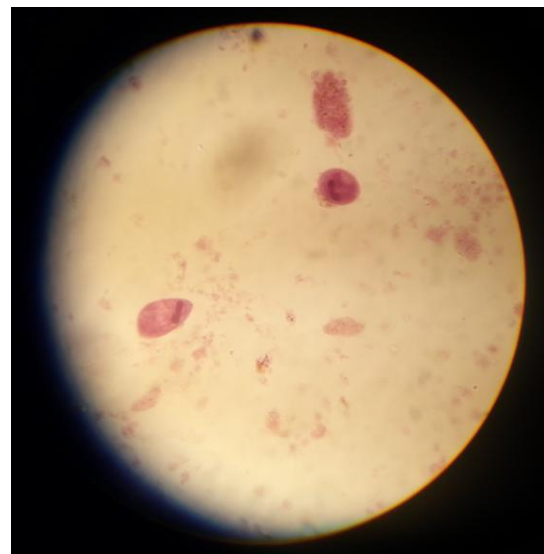
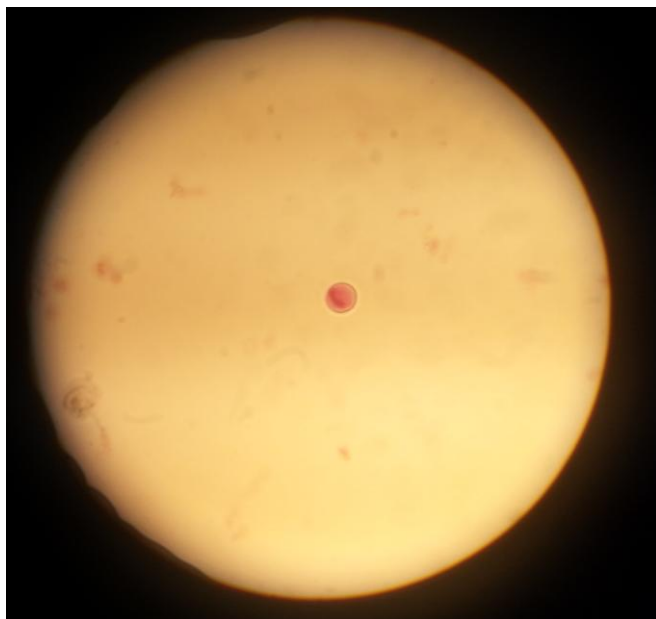
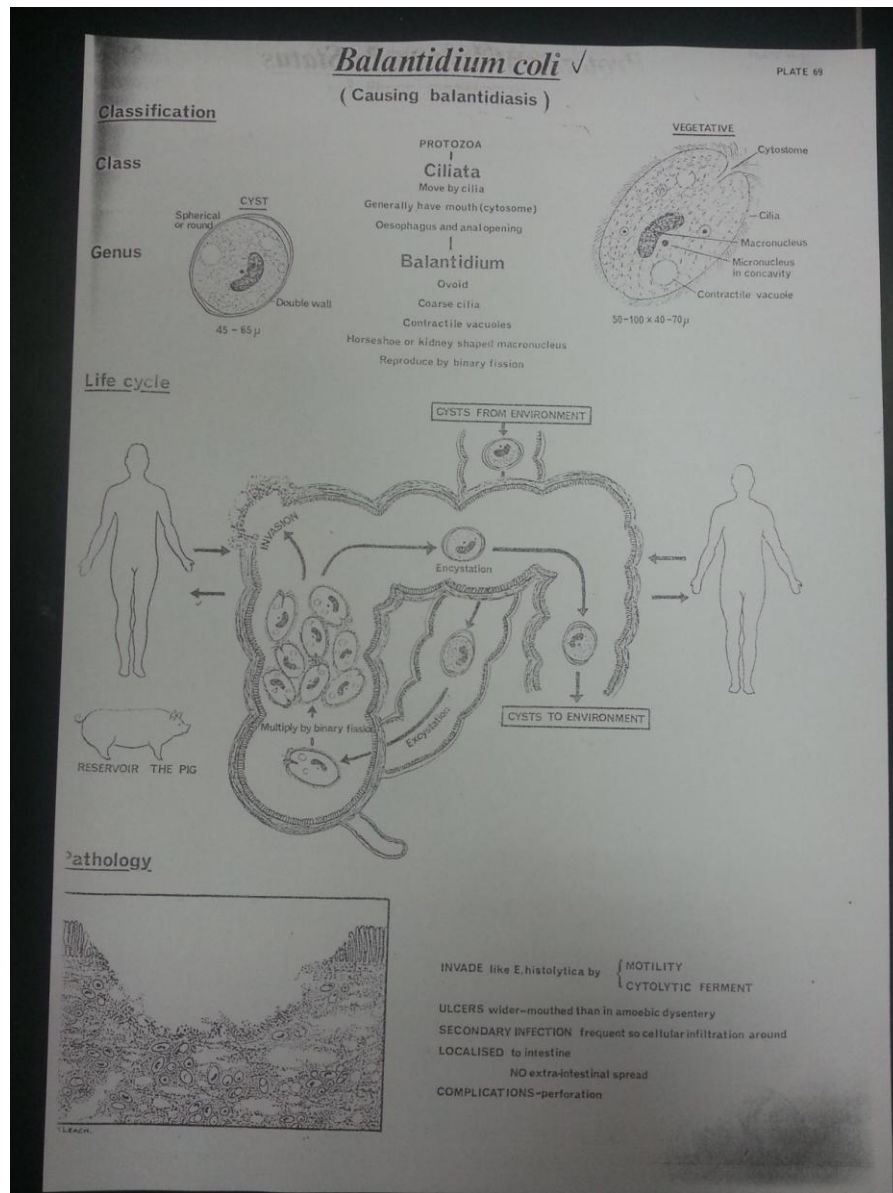
Geographical distribution = Cosmopolitan

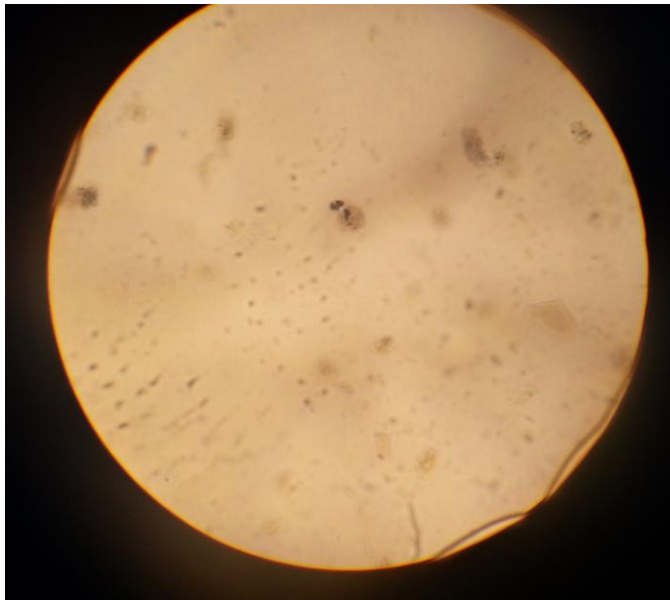
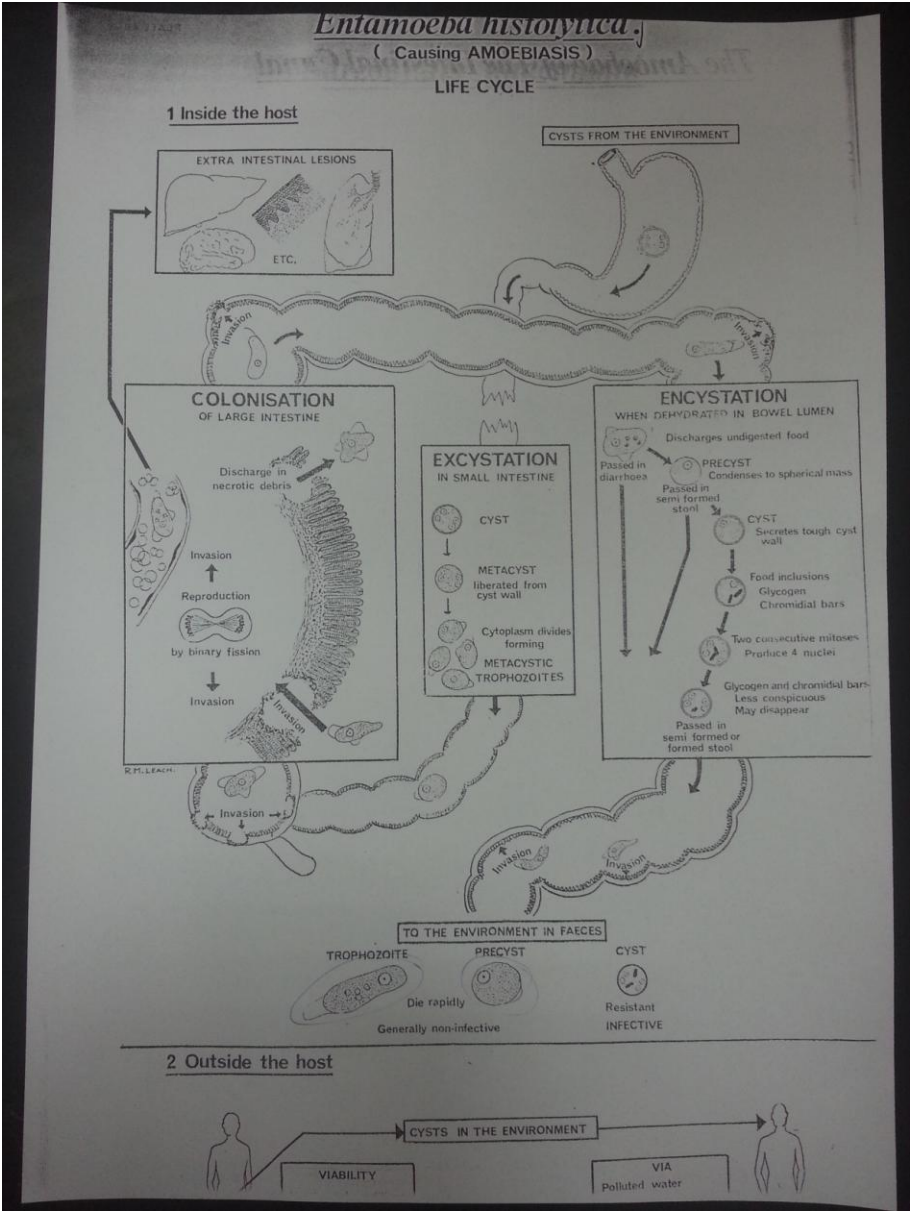
PATHOLOGY

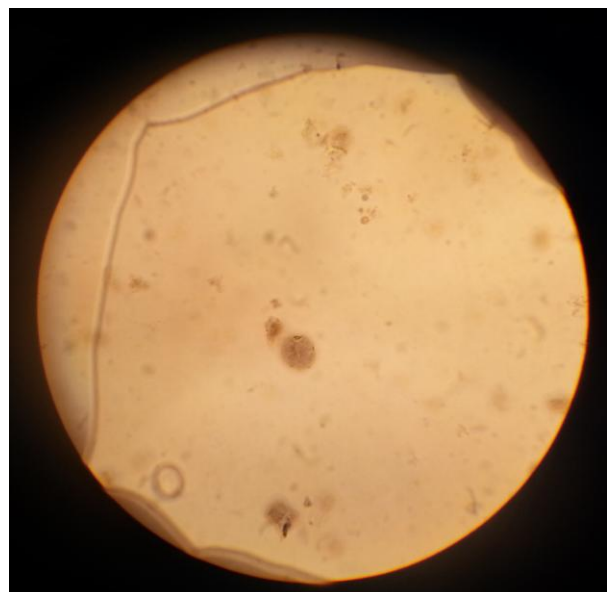
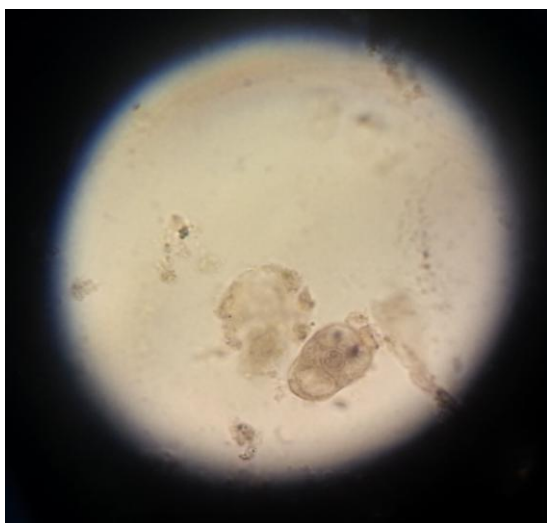
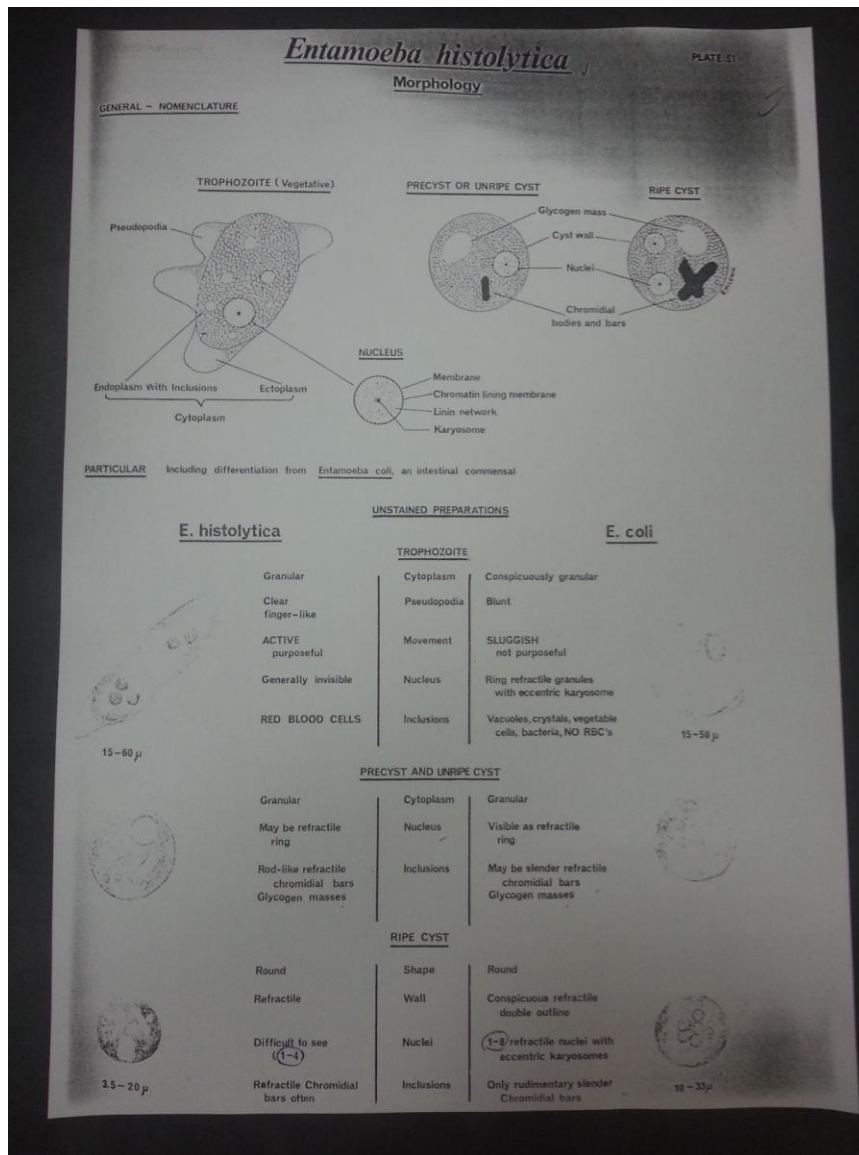
1. Generally none.
2. Heavy burdens - infections - local inflammation - abdominal

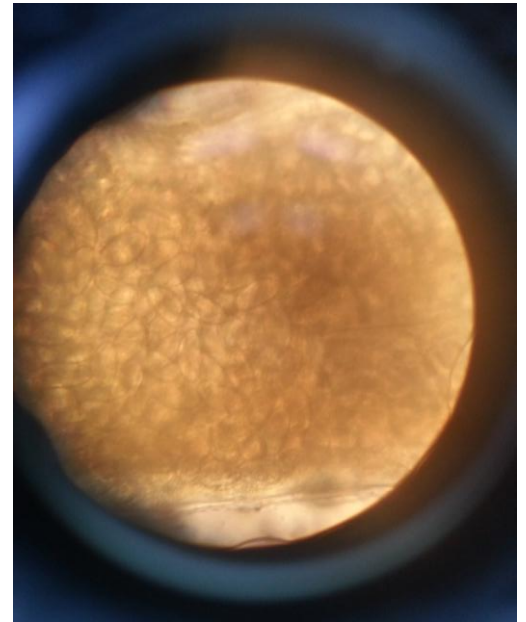
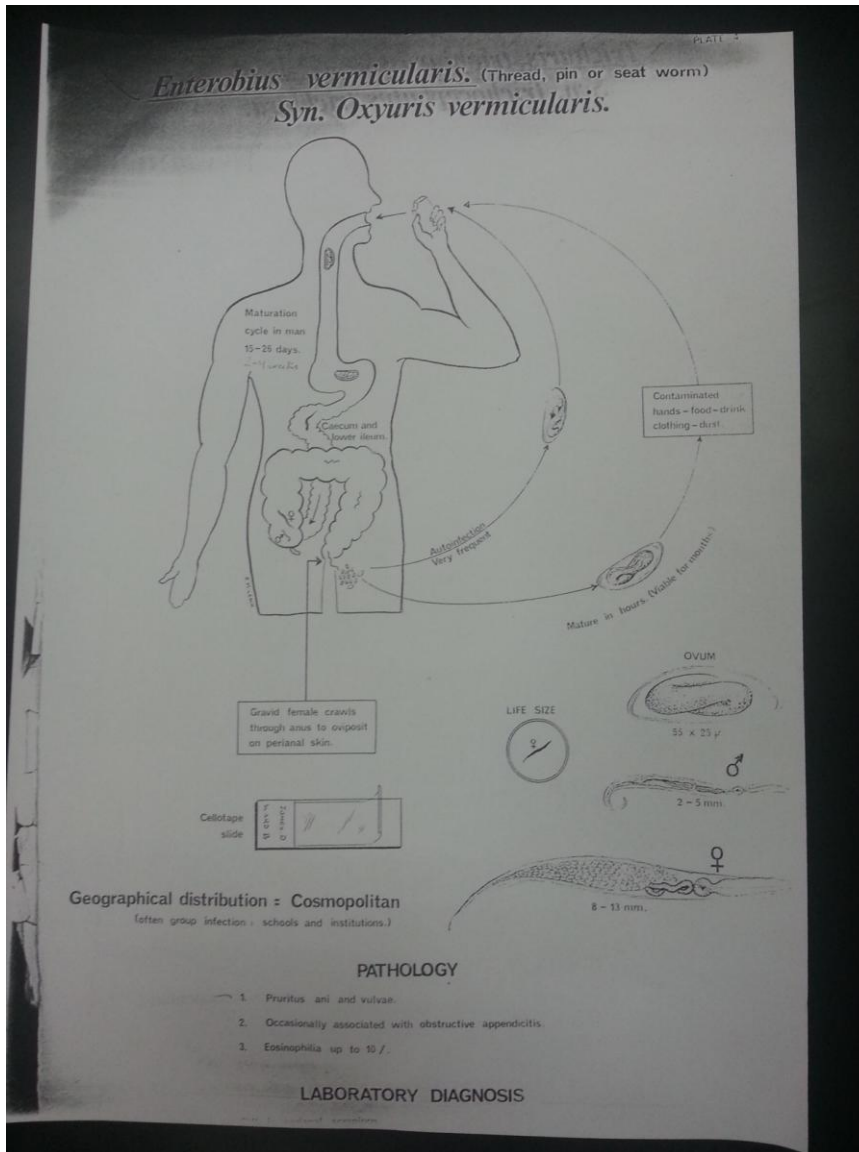




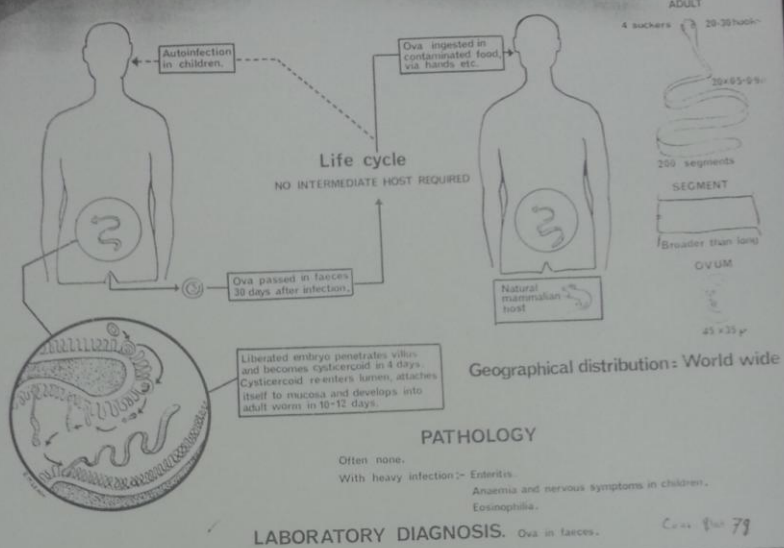




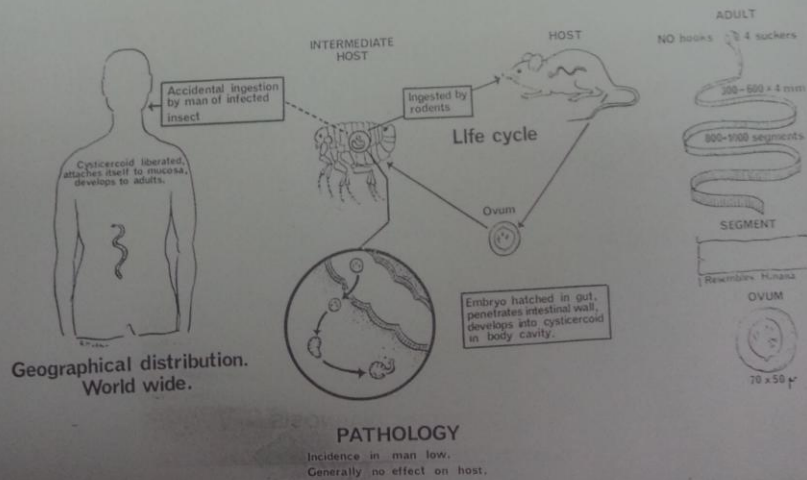




Hymenolepis nana

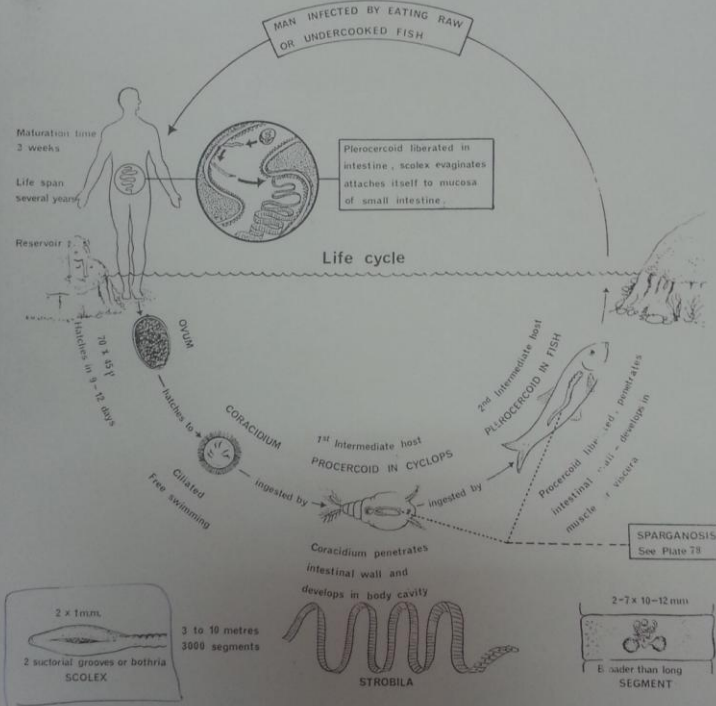


Hymenolepis diminuta



Dibothriocephalus latus ✓

Syn. *Diphylobothrium latum* (broad or fish tape worm).



Geographical distribution = Europe, Asia, Africa, America.

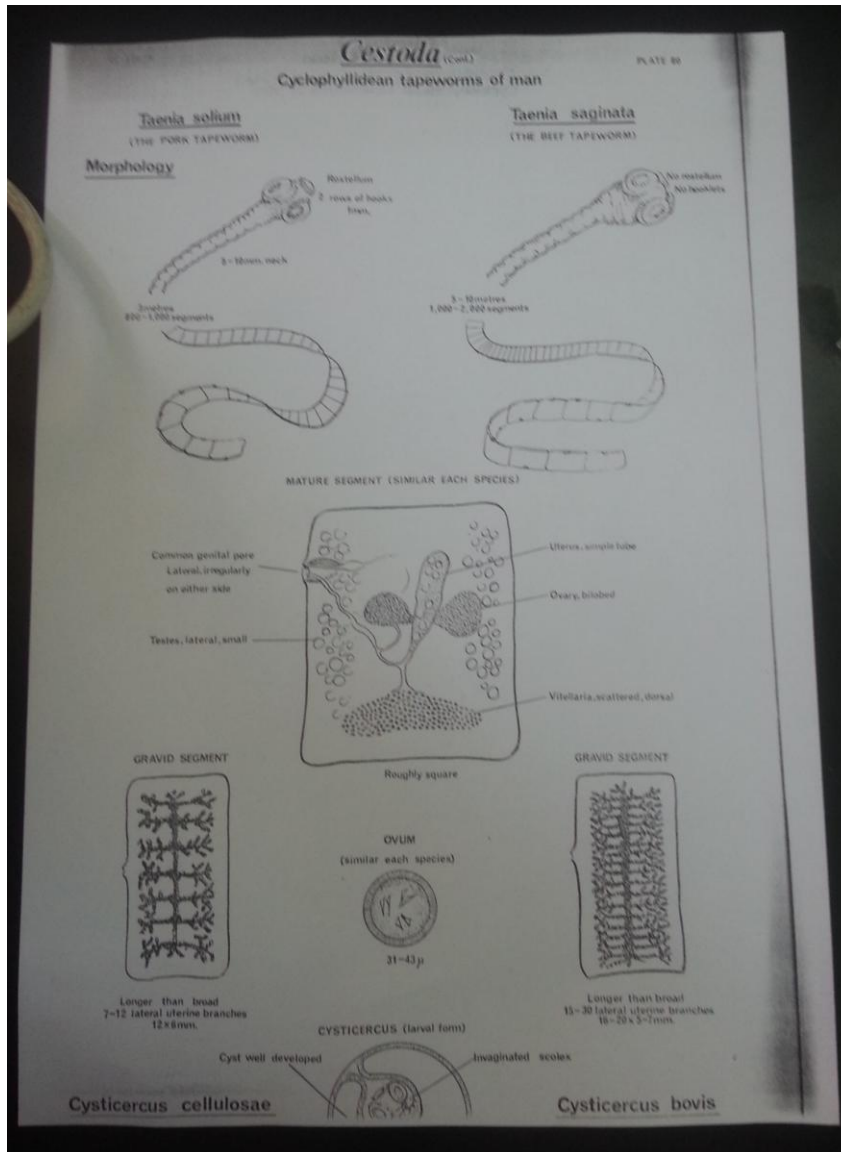
PATHOLOGY

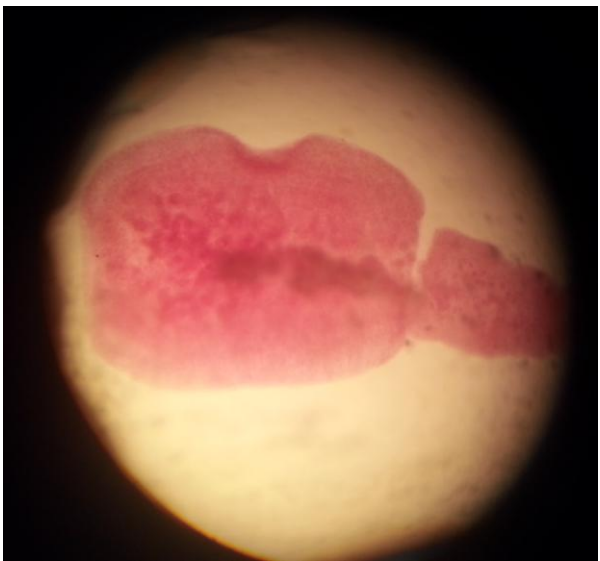
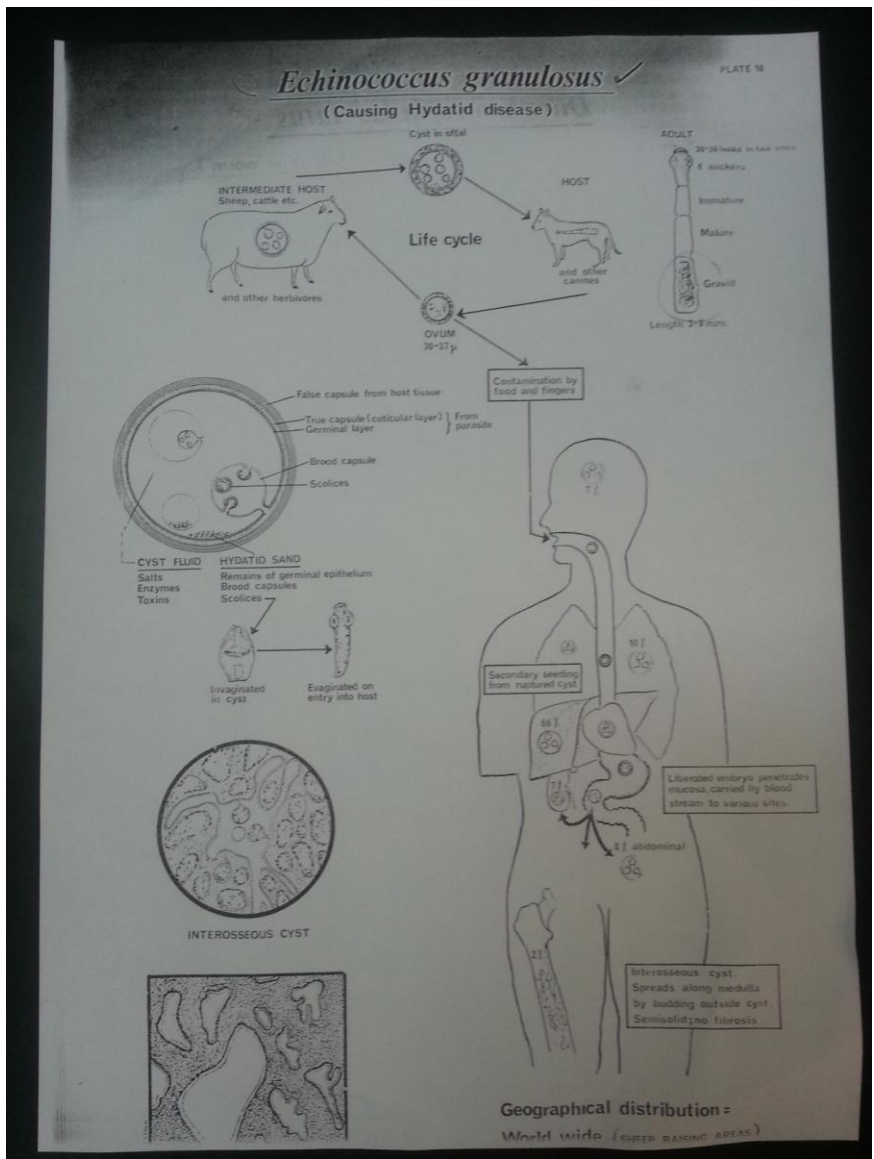
Generally none.

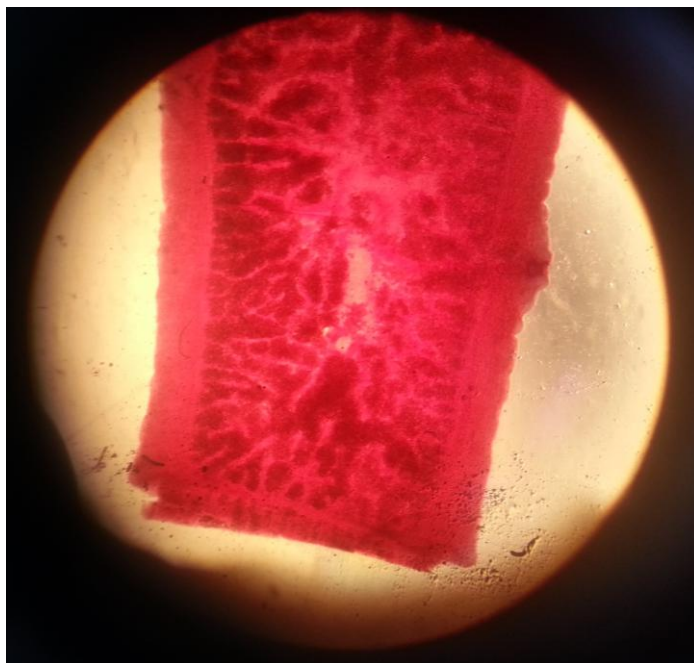
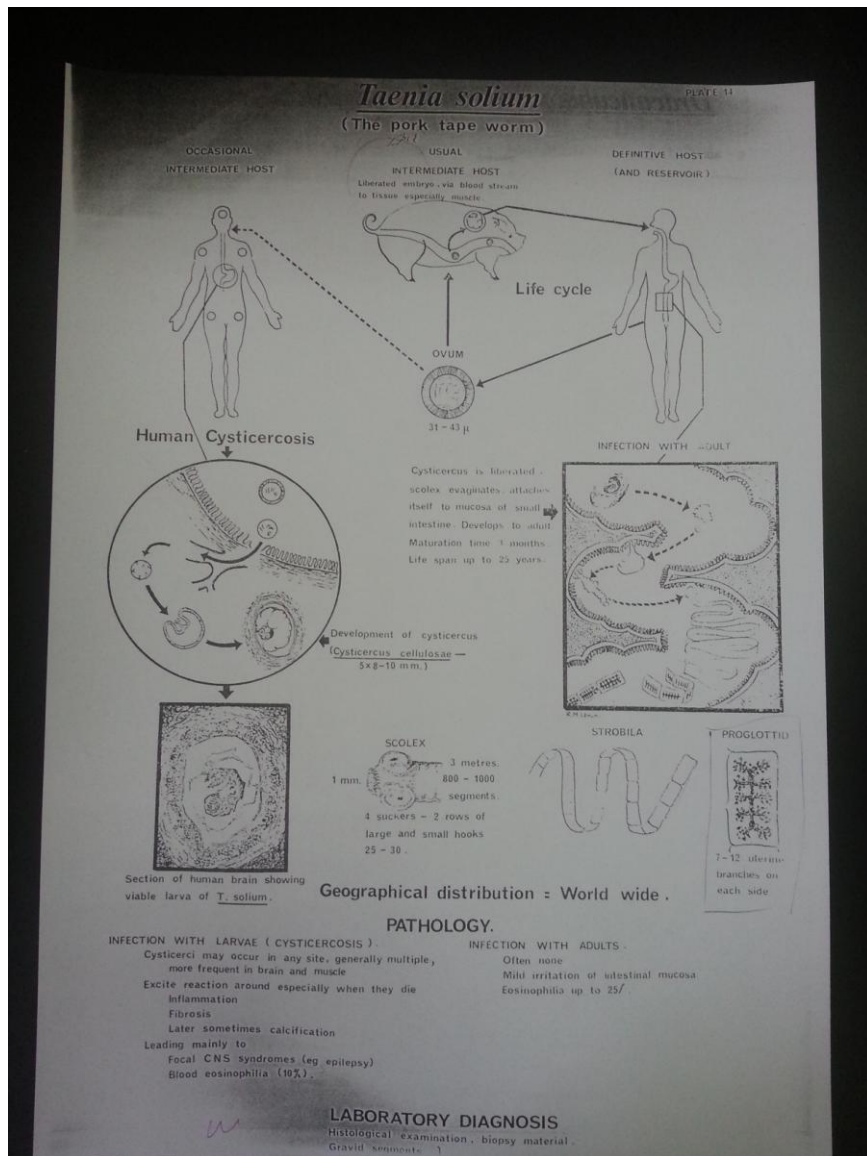
Occasionally macrocytic anaemia (absorption of B₁₂ by worm).

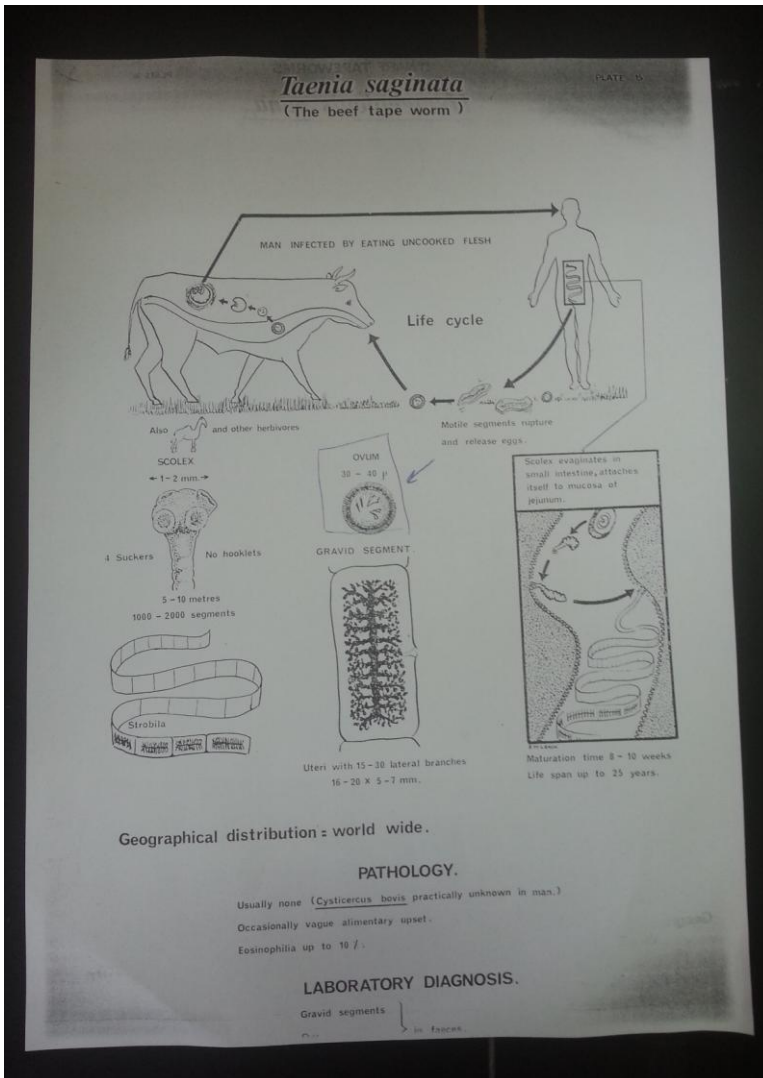
LABORATORY DIAGNOSIS











Nothing was seen through the microscope, but here's a comparison between *Taenia Saginata* & *Solium*:

