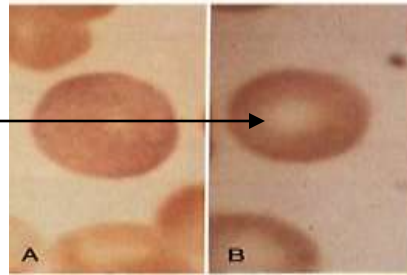
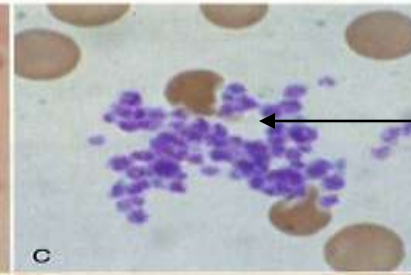


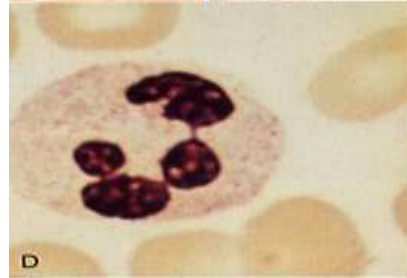
**Erythrocyte**



**Platelets**



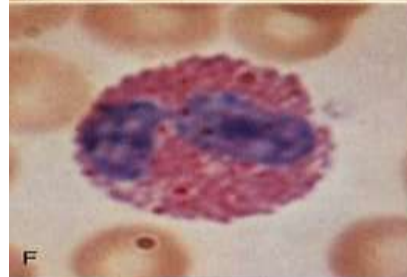
**Neutrophil**



**Band  
neutrophil**



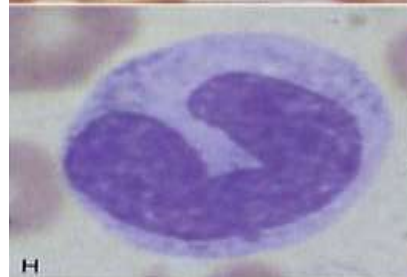
**Eosinophil**



**Basophil**



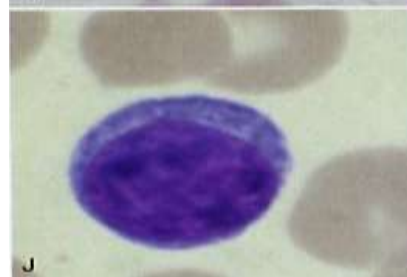
**Monocyte**



**Degenerating  
neutrophil**



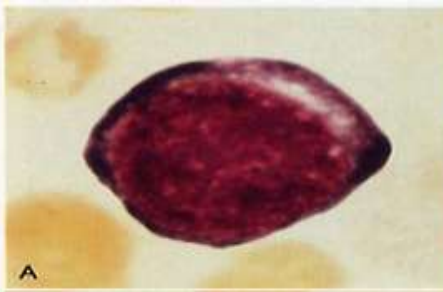
**Large  
lymphocyte**



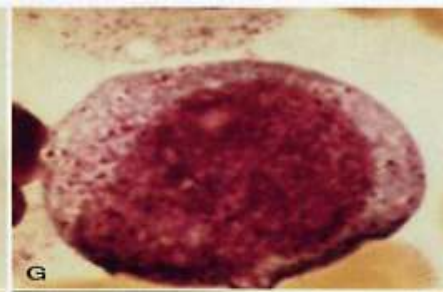
**Small  
lymphocyte**



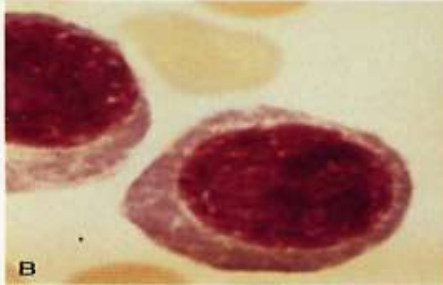
**Proerythroblast**



**Promyelocyte**



**Basophilic erythroblast (early)**



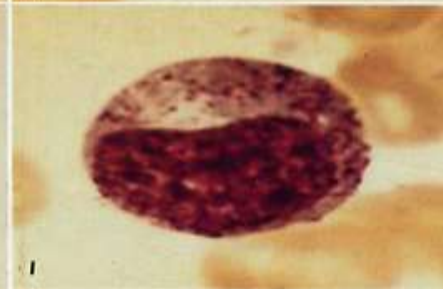
**Neutrophilic myelocyte**



**Poly-chromatophilic erythroblast (intermediate)**



**Neutrophilic metamyelocyte**



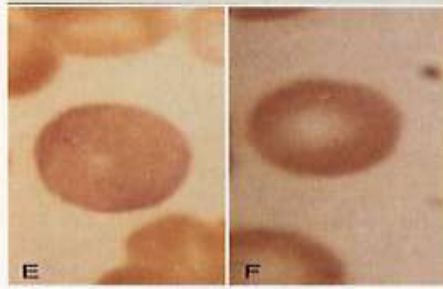
**Normoblast (late)**



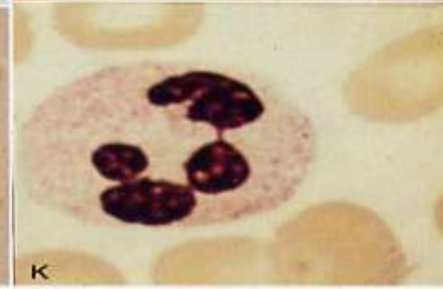
**Band neutrophil**

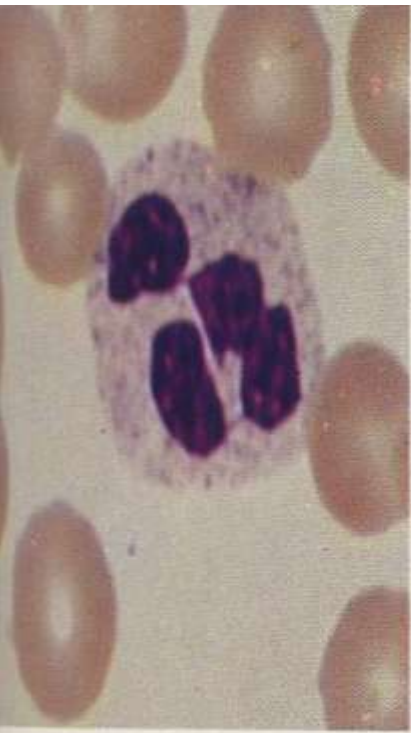


**Erythrocyte**



**Mature neutrophil**





**Polymorphonu  
-clear  
neutrophil**

**Polymorphonu  
-clear  
neutrophil**

**Eosinophil**

**Basophil**





**Metamyelocyte**



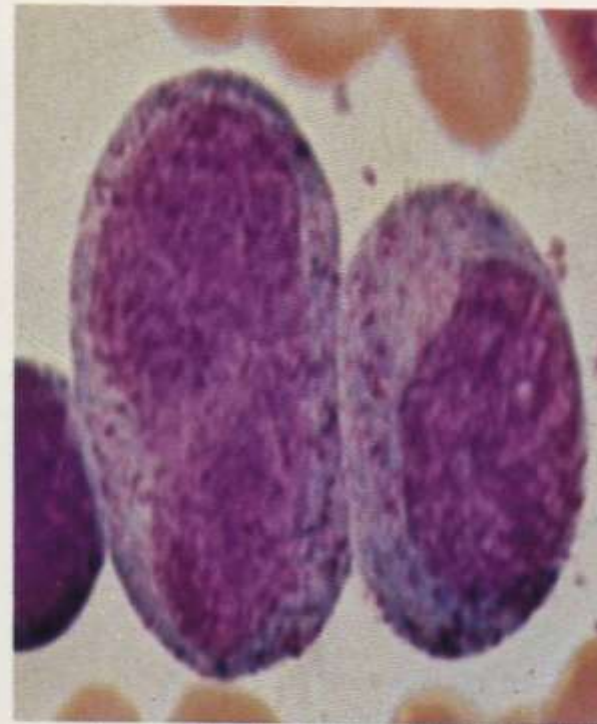
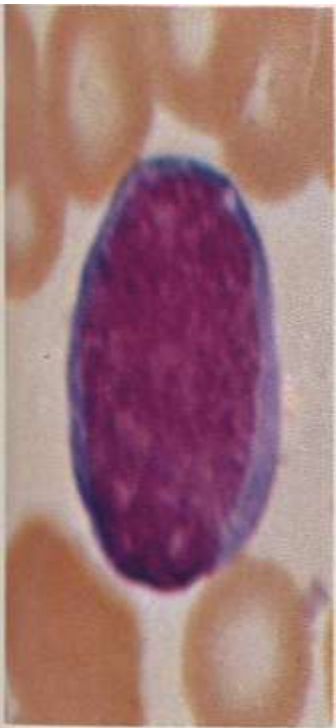
**Band  
neutrophil**



**Band  
neutrophil**



**Polymorphonu  
-clear  
neutrophil**



**Myeloblast**

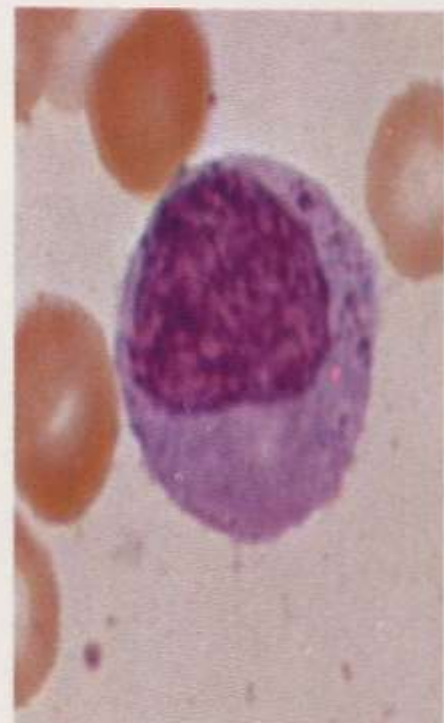
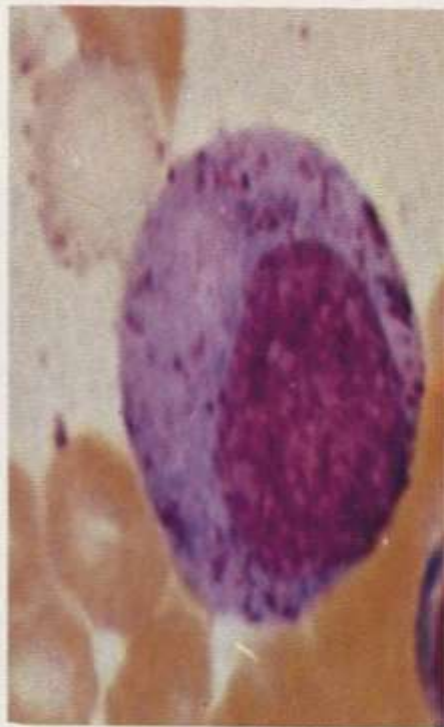
**Myeloblast**

**Myelocyte**

**Metamyelocyte**

**Two  
Promyelocytes**

**Promyelocyte**



**Myelocyte**

**Myelocyte**

**Myelocyte**

**Early  
Metamyelocyte**

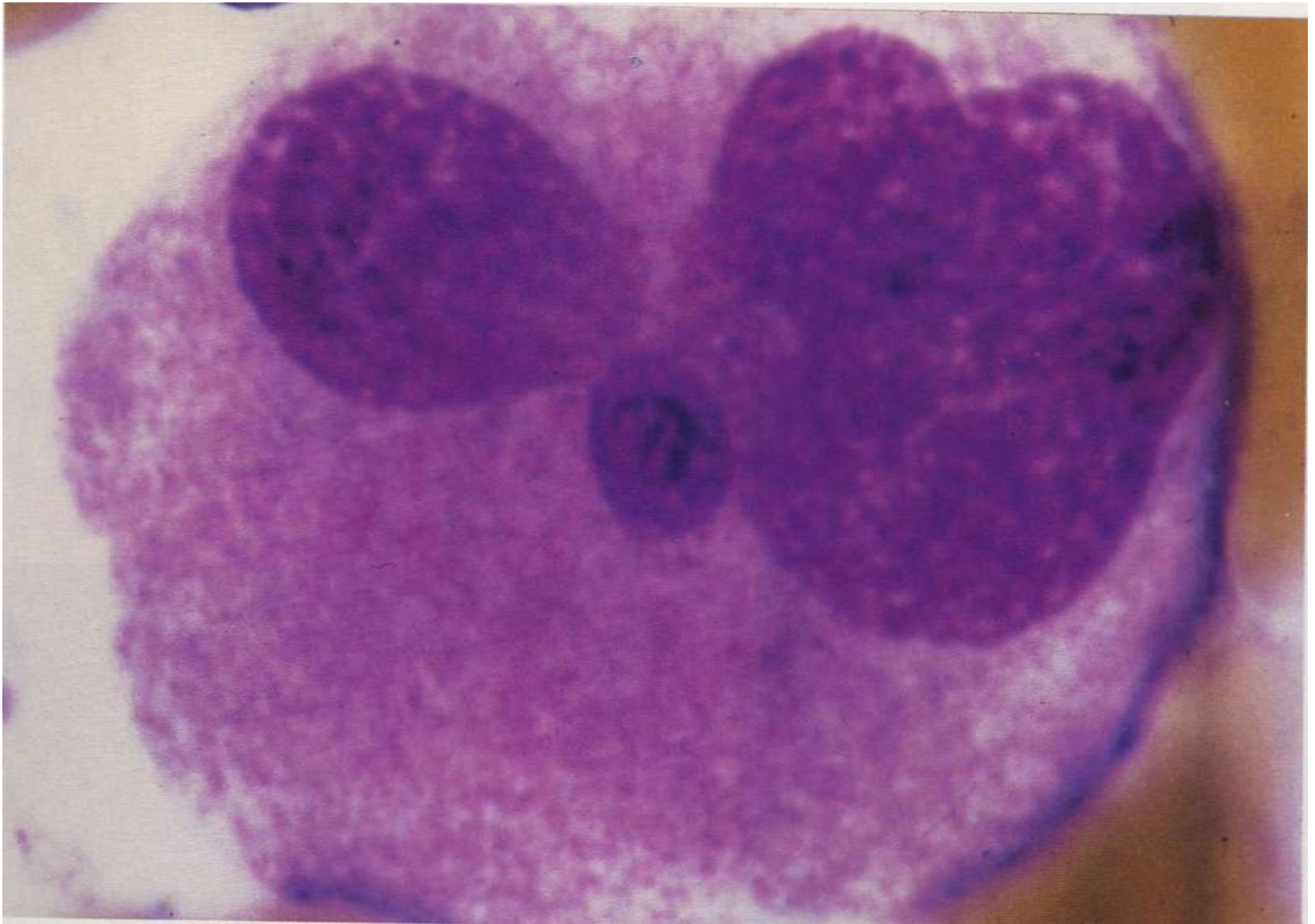




**Monocyte**

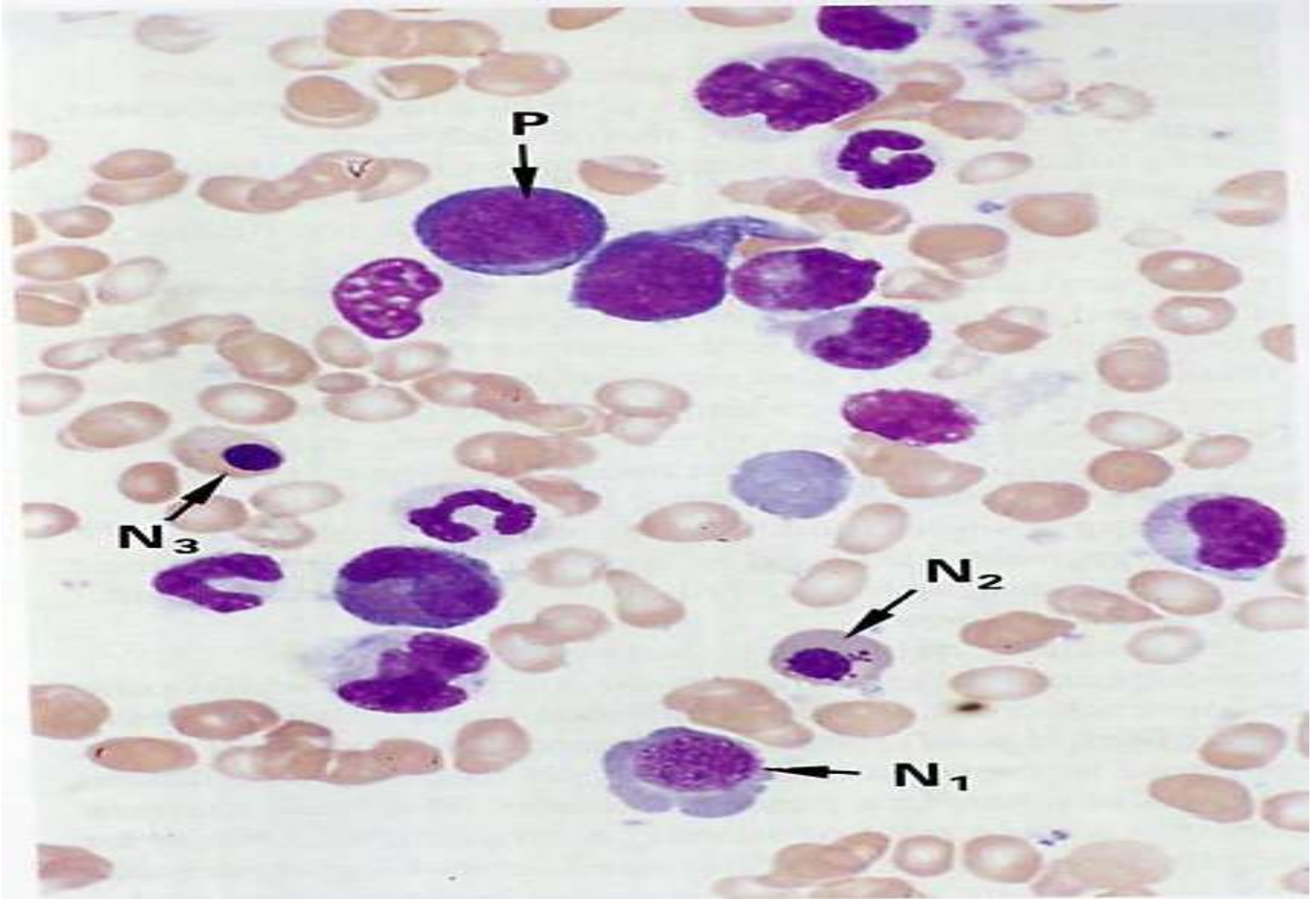


**Monocyte**



**Megakaryocyte ( multilobed nucleus)**



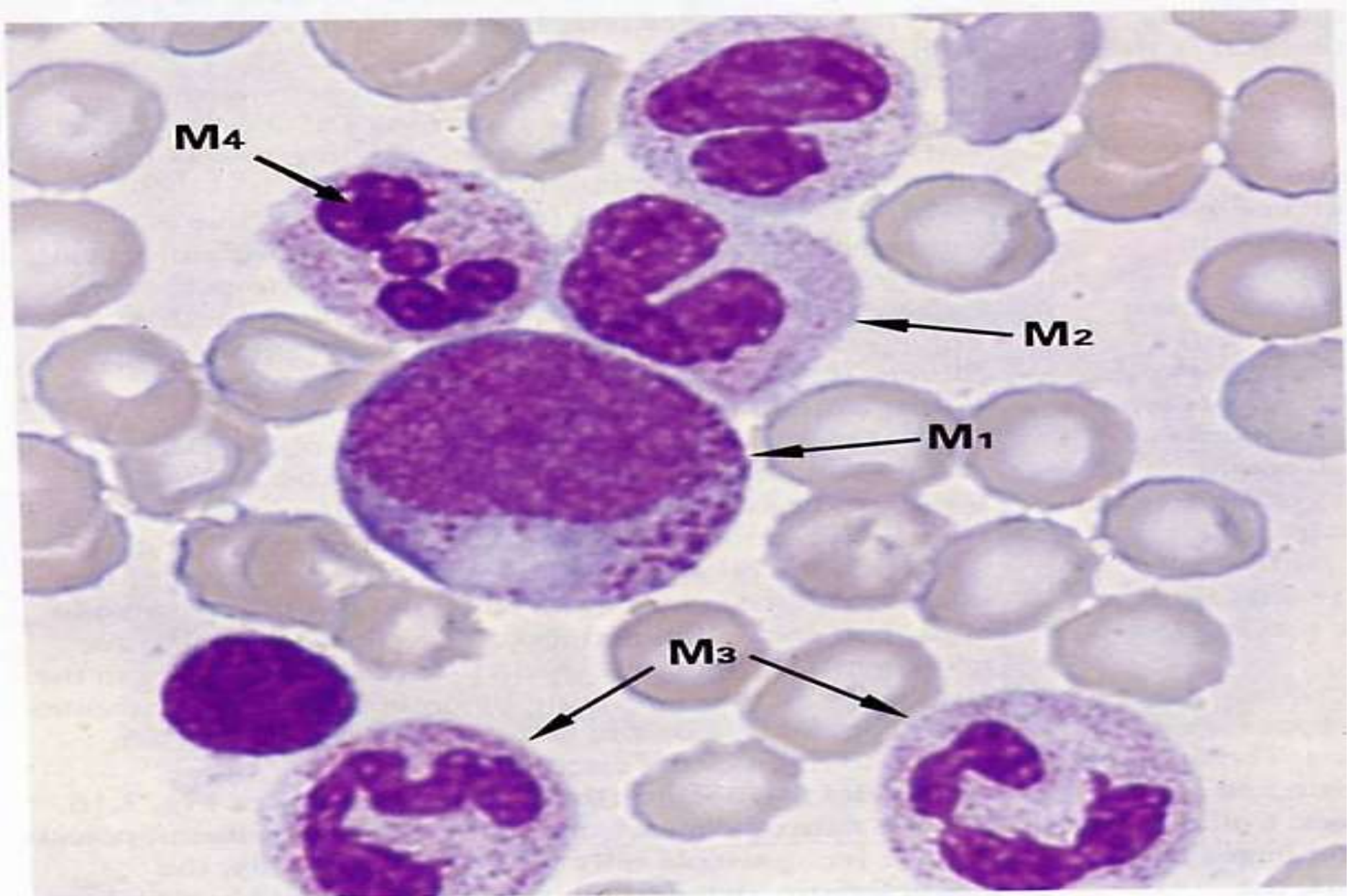


**P = Proerythroblast**

**N1= basophilic  
erythroblast  
(early N.)**

**N2 =polychromatophilic  
erythroblast  
(intermediate N. )**

**N3 =  
orthochromatic  
erythroblast (late  
N. )**



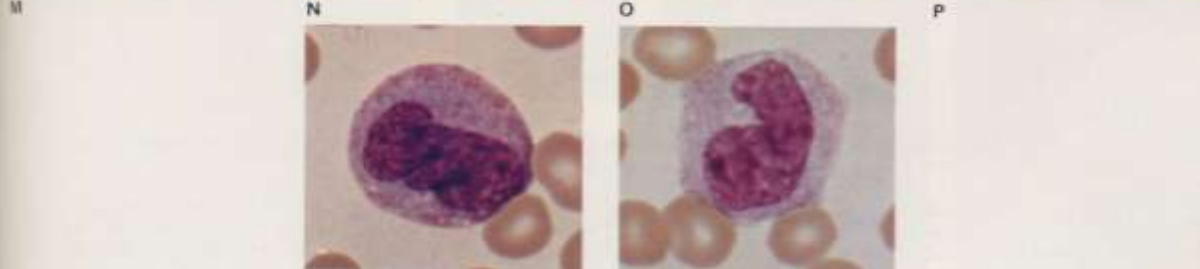
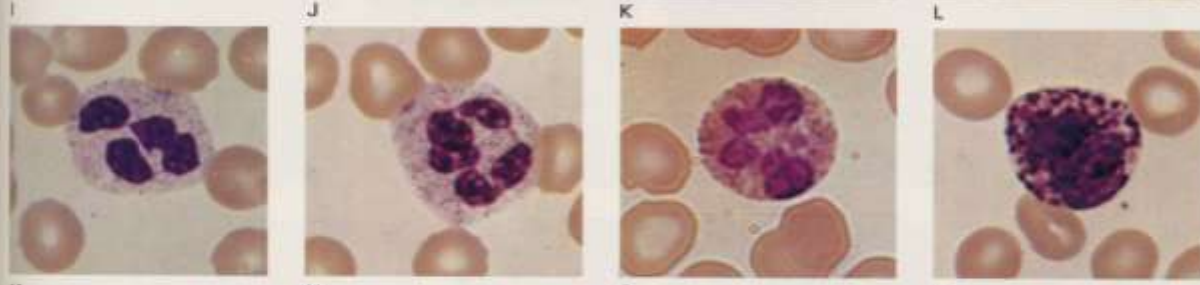
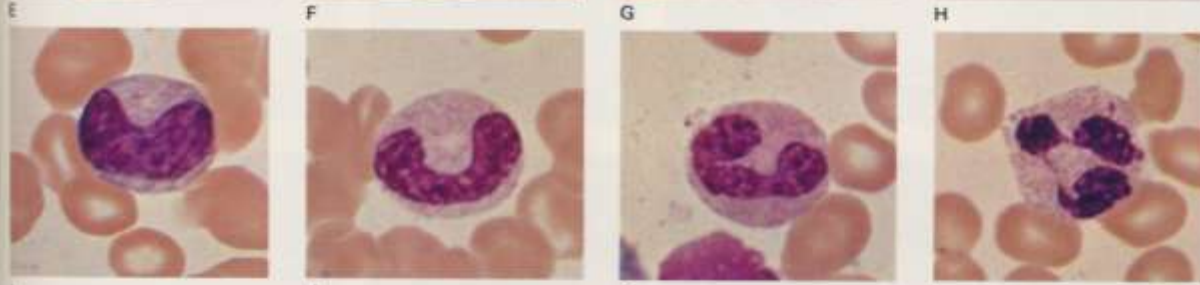
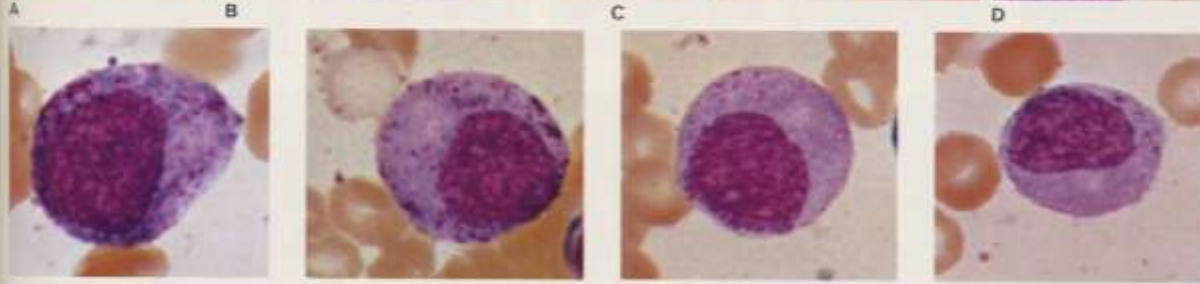
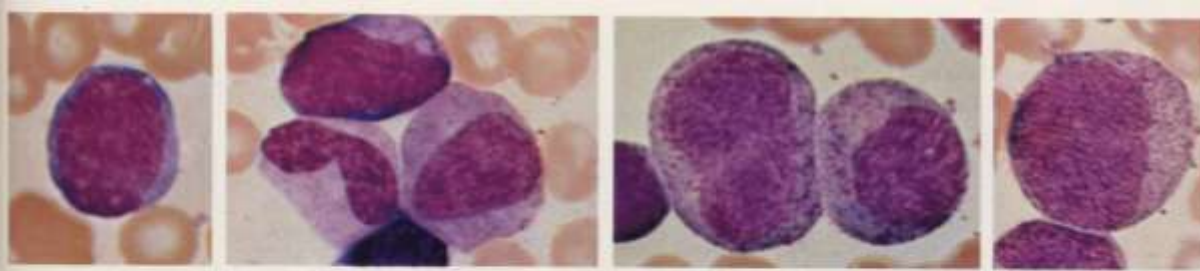
**M1 = neutrophil  
myelocyte**

**M2=  
metamyelocyte**

**M3= stab cell**

**M4= mature  
neutrophil**







# Chronic myeloid leukemia

