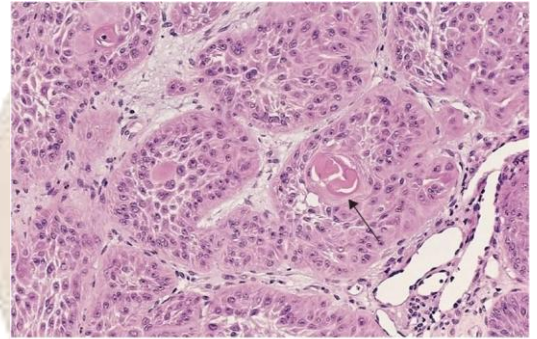


- 1- ALL of the following has a minimal replicative activity in their normal state EXCEPT :
- a- Hematopoietic cells
 - b- Smooth muscle cells
 - c- Hepatocytes

- 2- (LAB) one of the following is associated with this lesion :
- a- a Benign tumor
 - b- an intermediate differentiated malignant tumor
 - c- a well-differentiated malignant tumor
 - d- a malignant tumor
 - e-



- 3- which of the following is involved in Vasculogenesis in the Embryo:

- a- VEGF - B
 - b- VEGF - C
 - c- VEGF - d
 - d-
 - e-
- 4- A man from JAPAN, the diagnosis shows that he has a cancer, the most likely kind of cancer would he has is :
- a- Colon Cancer
 - b- Prostatic Cancer
 - c- Stomach Cancer
 - d-
 - e-

- 5- Wound strength after sutures are removed at 1 week is :
- a- 5% of the unwounded skin.
 - b- 10% of the unwounded skin
 - c- 15% of the unwounded skin
 - d- 70% of the unwounded skin
 - e- 80% of the unwounded skin

- 6- A question about chronic myeloid leukemia (CML) :
the answer : It shows an increased tyrosine kinase activity

- 7- Which of the following is true about Keloid :
Increased tissue granulation
- 8- A molecule associated with transmigration?
PECAM
- 9- hepatic cancer is more probably metastasized from :
a- brain
b- bladder
c- pancreas
d- Bone marrow
e- -----
- 10- a molecule associated with vasodilatation ?
NO
- 11- which statement is false ?
fibronectin is the most abundant glycoprotein in basement membrane (must be laminin)
- 12- which statement is true :
type 9 collagen presents in intervertebral disks
- 13- witch of the following would not develop into cancer ?
leiomyoma of the uterus
- 14- Which one is involved in increasing erythrocyte sedimentation rate ?
Fibrinogen
- 15- which is involved in recruitment of smooth muscle cells in angiogenesis?
PDGFF
- 16- synthesis of acute-phase proteins:
IL-6
- 17- Which of the following tumors metastasize/s by seeding?
a- Medulloblastoma in the CNS
b-Renal-cell carcinoma
c-Hepatic-cell carcinoma
d-Teratoma
e-Two of the above

18- which one of these is not an autosomal dominant disease
xeroderma pigmentosum

19- a question about LAD1 :
It's an integrin synthesis defect

20- which of the following is not associated with granuloma ?
ulcerative colitis

21- which of the following would lead to cell transformation ?
loss of the check point between G1 and S

22- one of the following molecules is an opsonin :
C3b

23- (LAB) ... All of the following is true about Fibroadenoma except ?
It invades axillary lymph nodes

24- (LAB) a stain used for Iron detection " the question wasn't like this ,it was a histologic picture and you must recognize it's Iron "
perls' stain

25- which of the following would not metastasize ?

Basal cell Carcinoma

26- Marfan syndrome is associated with :
Non-fibrillar

27- Translocation of (14,18) in a lymphoma would inhibit ?
apoptosis

28- li-fraumeni syndrome shows a decrease of :
Cell cycle arrest

29- mismatched pair of cells and their mediators ..?

TH1 and IL-2

30- neurofibromin-1 is ?

A Gtpase activating protein

31- a CT scan showed a 4cm mass in the lung, tests revealed that it is bronchogenic carcinoma, patients also suffers from hypercalcemia and muscle weakness, the most likely cause of hypercalcemia is:

paraneoplastic syndromes

32- A patient with colorectal cancer what serum marker would be good to test in his/her case ?

Carcinoembryonic

33- Definitive test for cancer ?

excision biopsy

34- a disorder associated with mismatch repair :

hereditary non polyposis Coli

35- retinoblastoma develops when ?

there's a loss of heterogeneity

36- the wrong statement about a mutation of VHL gene:

Leads to a decrease in HIF

37- a woman with a dysplastic tissue in the cervix that is occupying the full thickness of the epithelial tissue , the best description is ?

Carcinoma in situ

38- HER2 is :

A growth factor receptor

39- about BRCA1 gene :

responsible for DNA repair

40- EBV virus in non-hodgkin lymphoma is associated with :

MYC t(14:18)

41- the inflammasome is associated with the activation of :

IL-1

42- a question about the histological grading of prostate invasive cancer:

resemblance to the surrounding tissue

43- A 60 year old man ,working 30 years in a factory, bladder cancer, what is the agent?
aniline dye

44- Most frequent chemical agent to cause lung cancer:

a- benzopyrene alpha (the most probable answer)

b- asbestos

c- -----

45- NSAIF drugs are used to inhibit the synthesis of

a- leukotriens

b- prostaglandins

c- bradykinin

d- -----

46- Follicular lymphoma is characterized by inhibiting :

Apoptosis

Answers of MCQ's :

1 → a

2 → c

3 → 9

4 → c

5 → b

9 → c

17 → a

Best thanks to :

Wijdan Lizbo

Yaman Alali

Nagham Hussein

لطفي صوان

مريم القطاونة

علي الياضي

عبد الله المصري