

# Streptococcus (on blood agar)

$\beta$ -hemolytic  
complete blood hemolysis

$\alpha$ -hemolytic  
green streaks

Group A  
suseptible to  
bacitracin  
(inhibition تقيين  
Zone)

Group B  
resistant  
(no inhibition  
Zone)

## Candida

On dextrose agar

- it has yeast smell
- creamy color

عشان أميز الأنواع حسب اللون

CHROMagar تستخدم

green → albicans

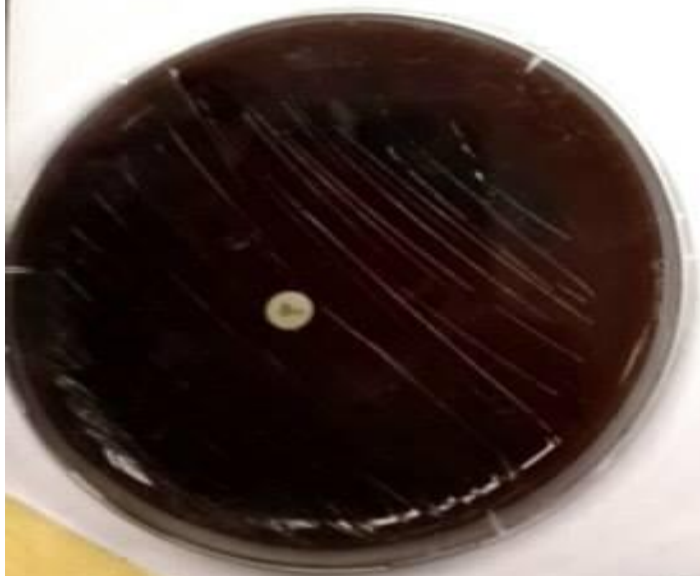
Blue → tropicalis

Pink → glabrata

↓  
على موف تقريبا

$\alpha$  - hemolytic  
Streptococci

Greenish Zone



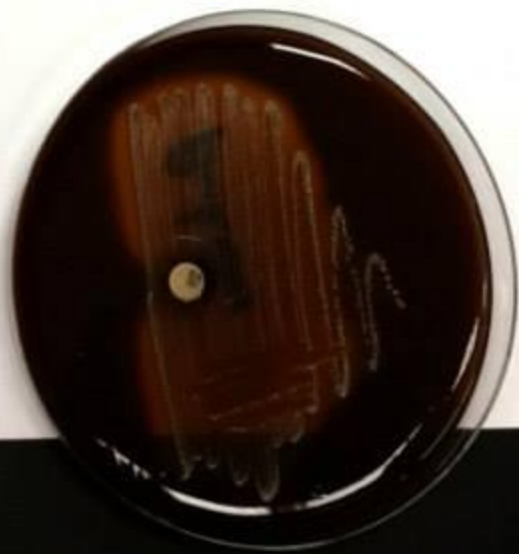
$\beta$ -hemolytic

Streptococci, group B

Bacitracin Resistant

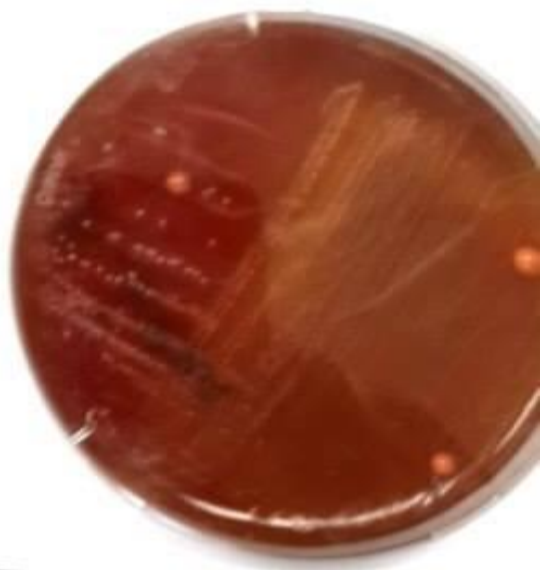
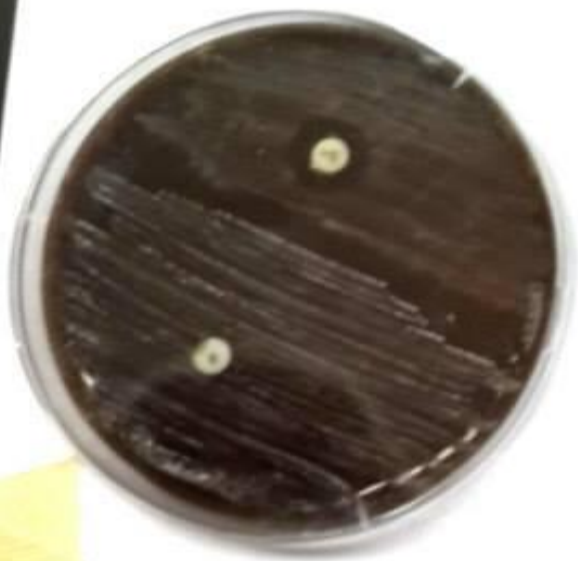
ON

Blood Agar



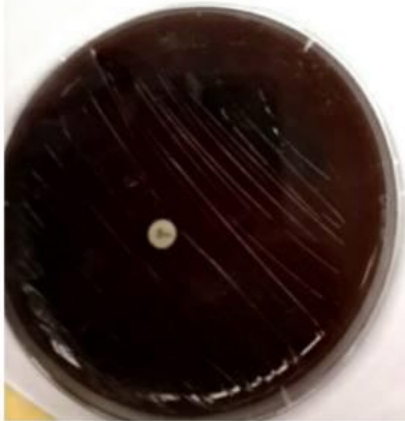
B-hemolytic Streptococci  
Group A

Bacitracin Sensitive.

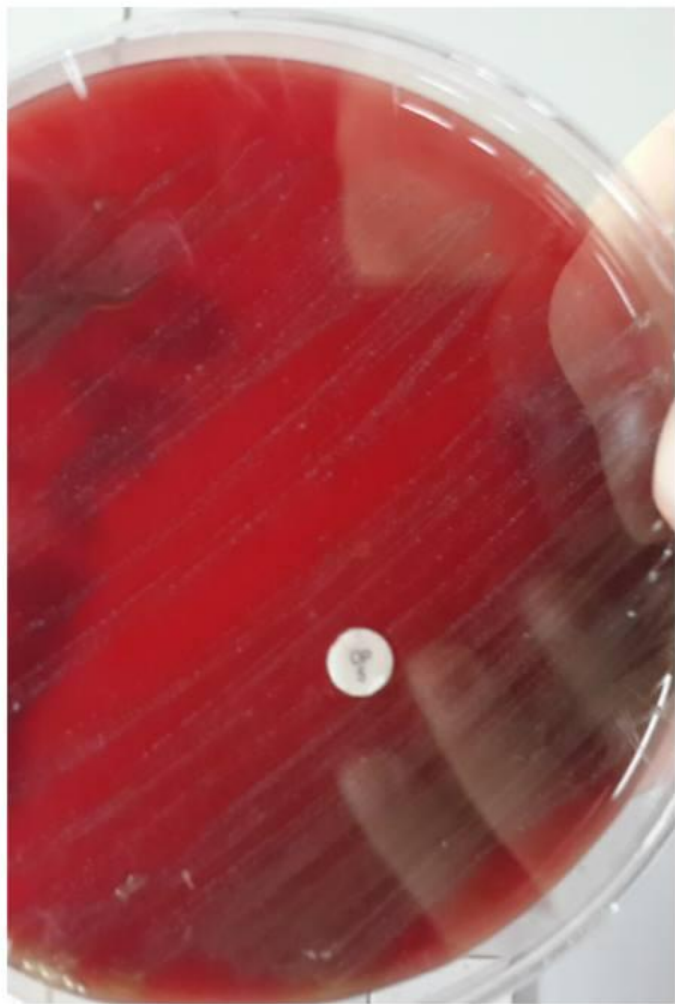


$\alpha$  - hemolytic  
Streptococci

Greenish Zone

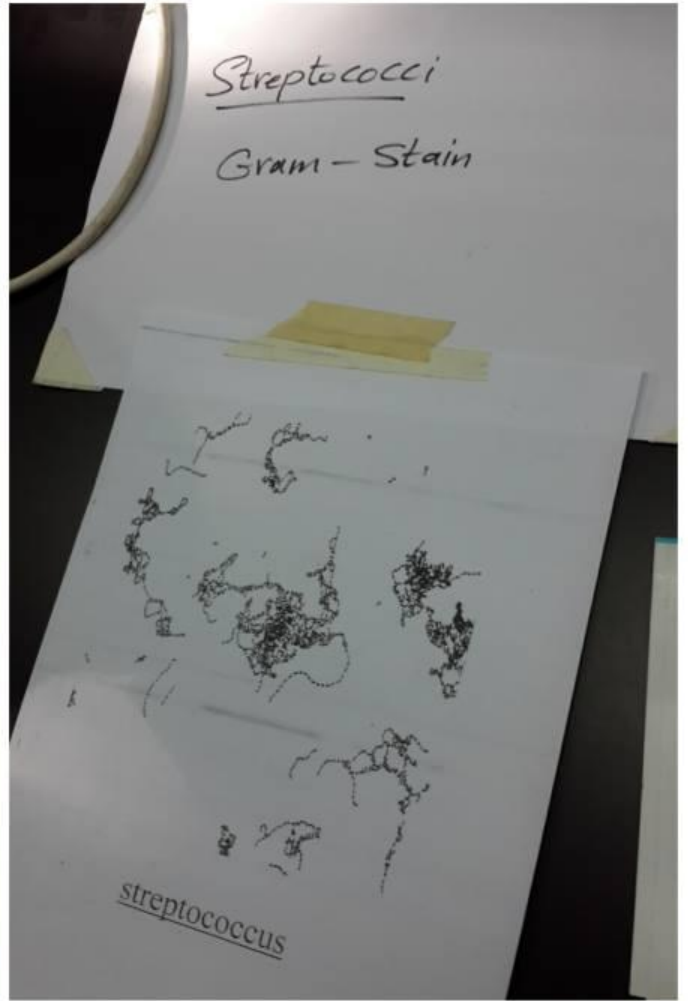
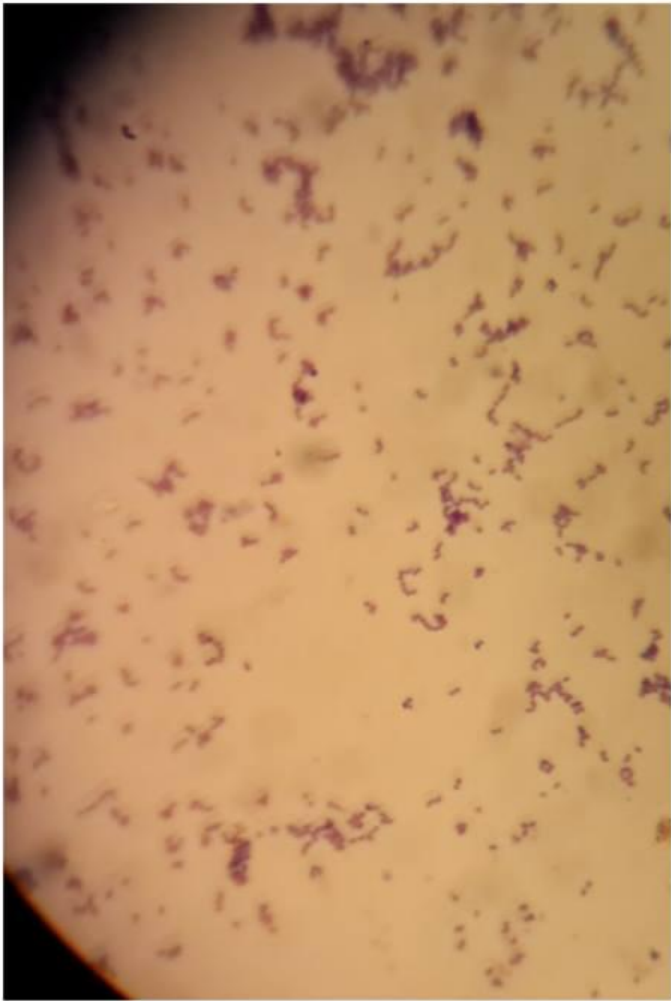


**The agar color ,which is on the left, is brown because it's an old one, it should be as the agar on the right .**



$\alpha$  - hemolytic  
Streptococci

Greenish Zone



Candida albicans

Sabouraud Dextrose Agar

Creamy colored colonies  
with yeast smell.

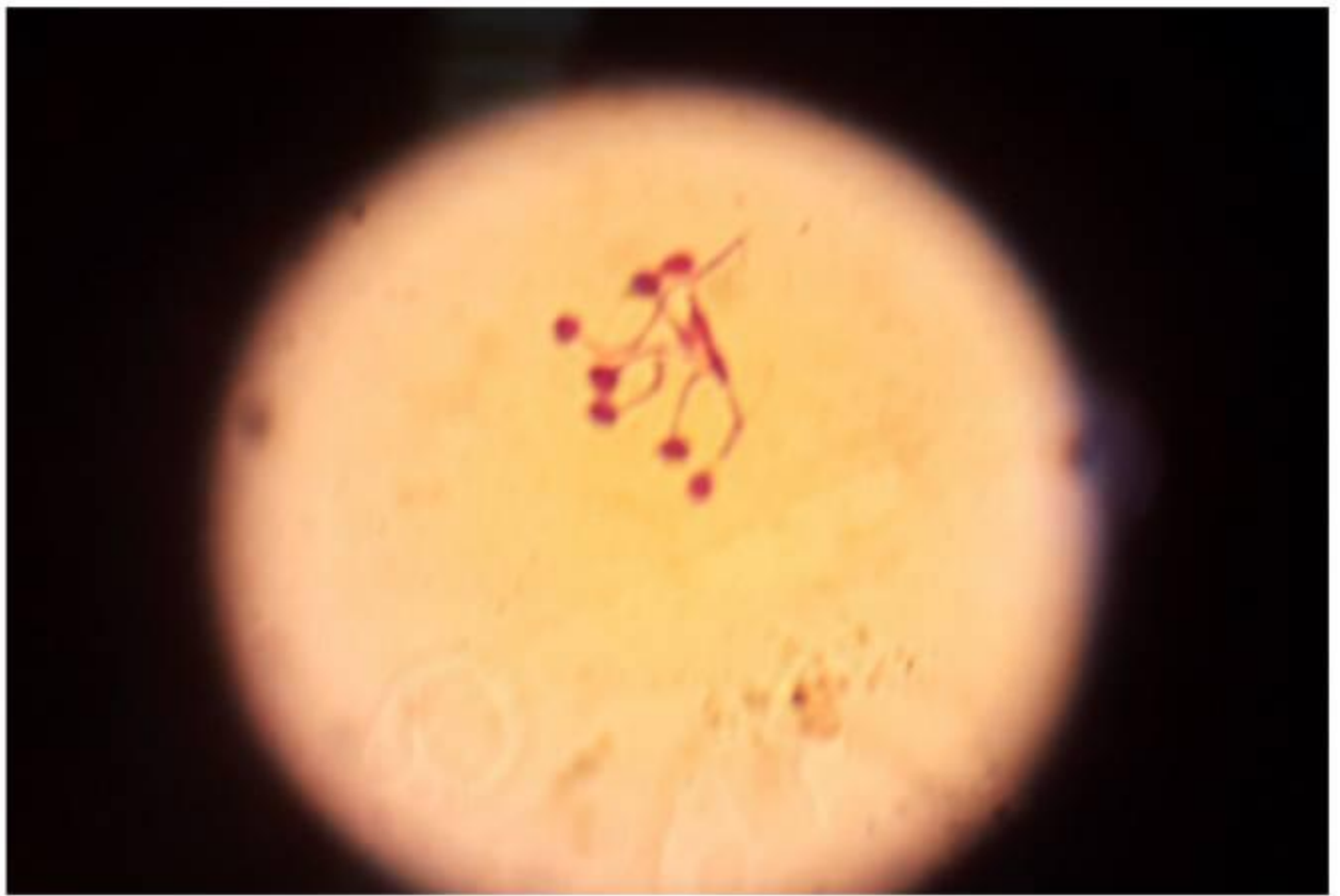
Candida albicans

Media: Sabouraud Dextrose  
Agar

Creamy color colony  
with yeast smell







Germ-Tube Test

Gram-stain

Gram positive

pseudohyphae





## Chromagar Media

Candida      albicans

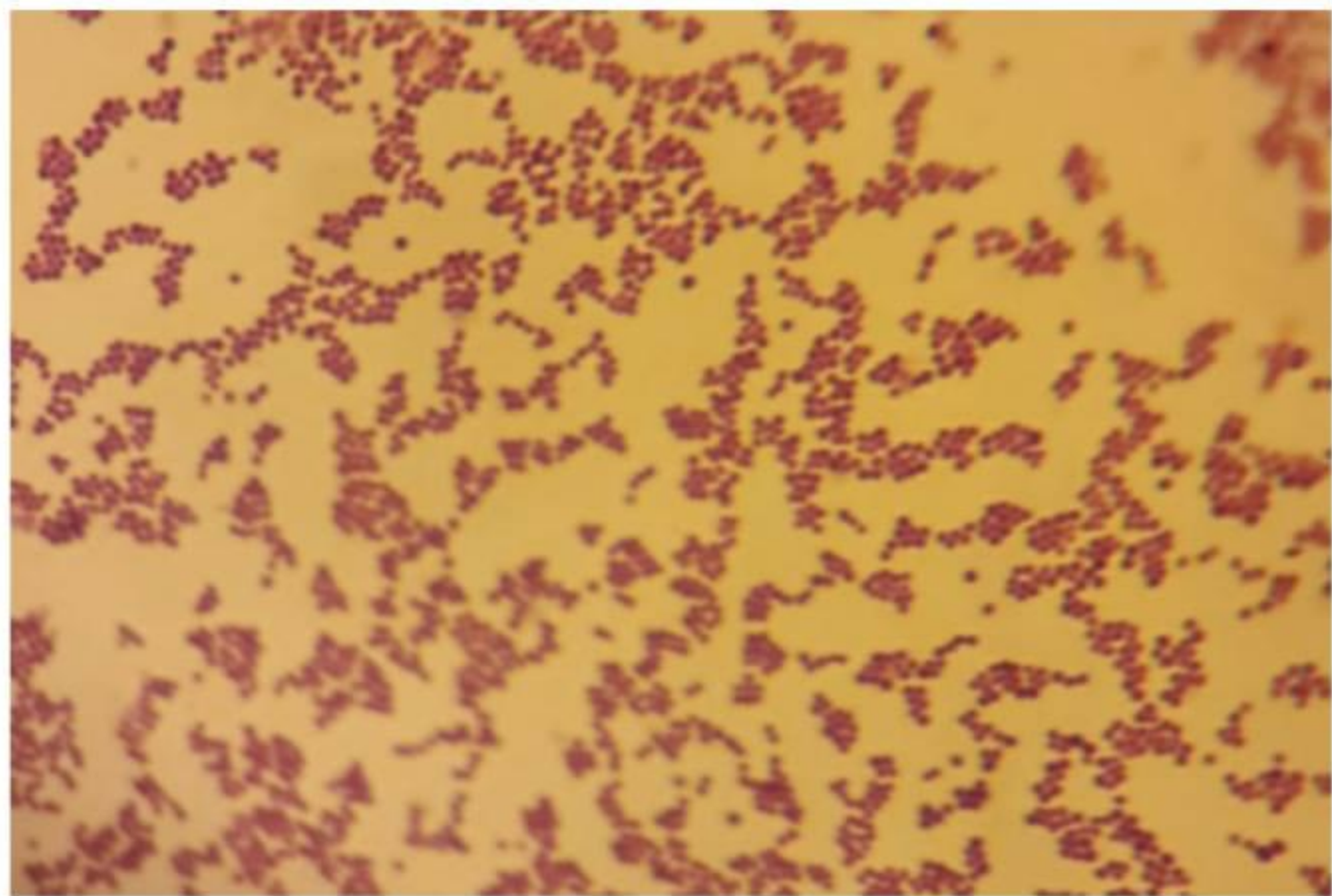
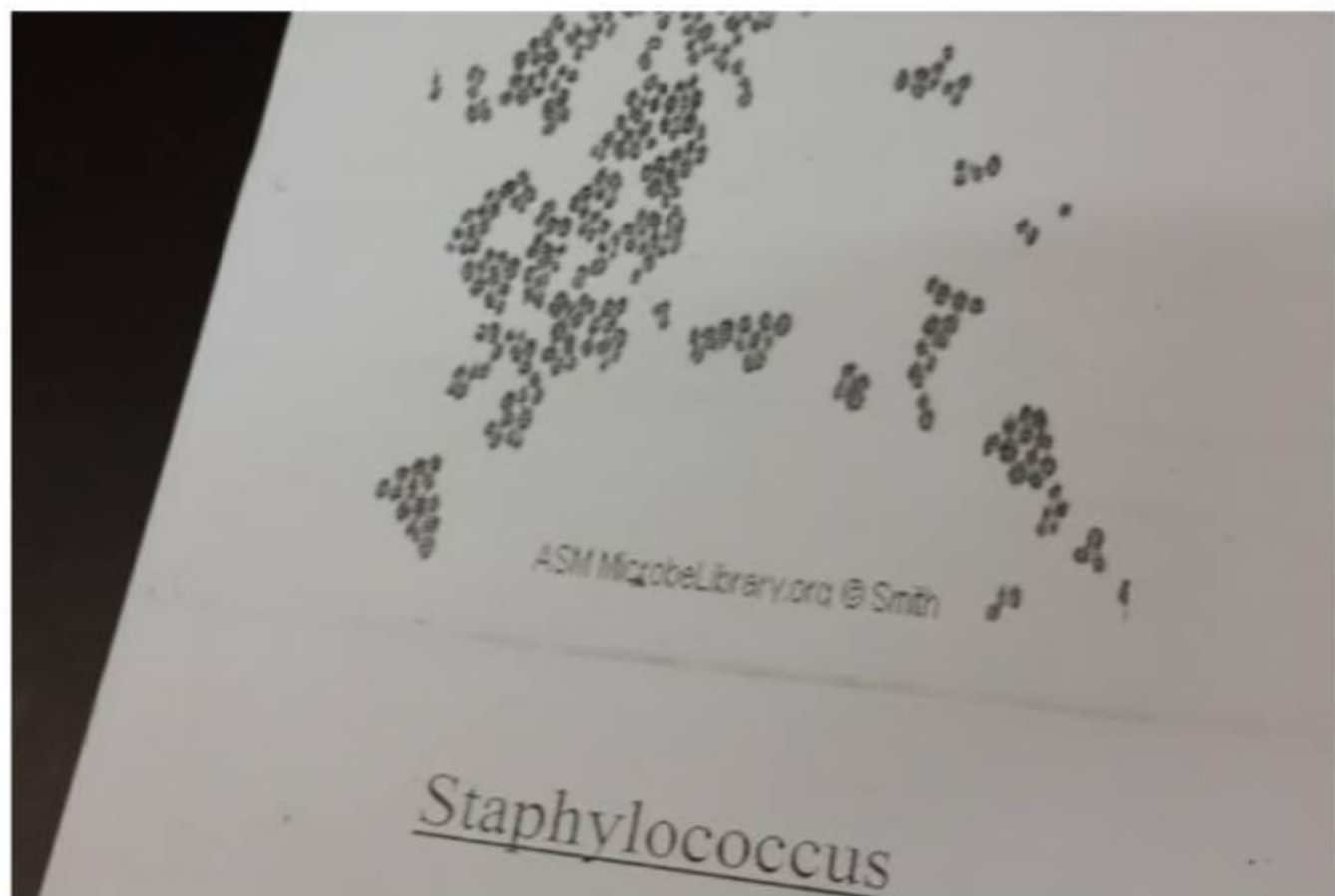
Green color

Candida      tropicalis

Blue color

Candida      glabrata

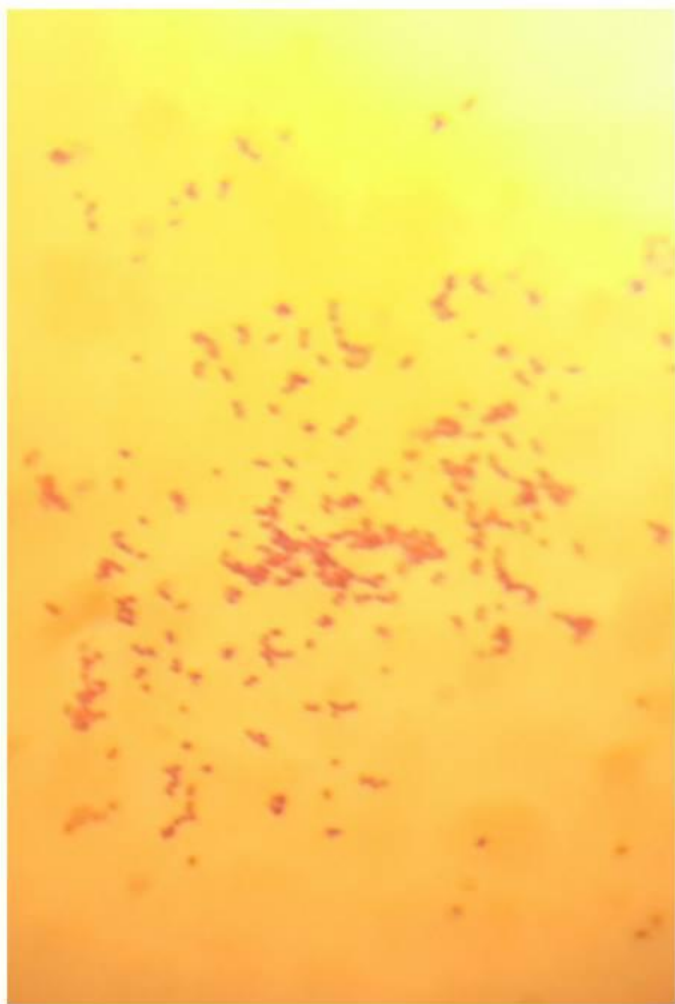
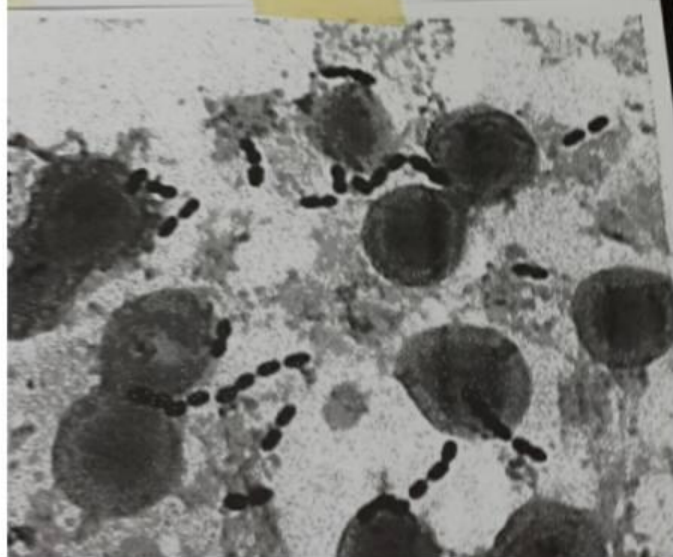
pink glistening

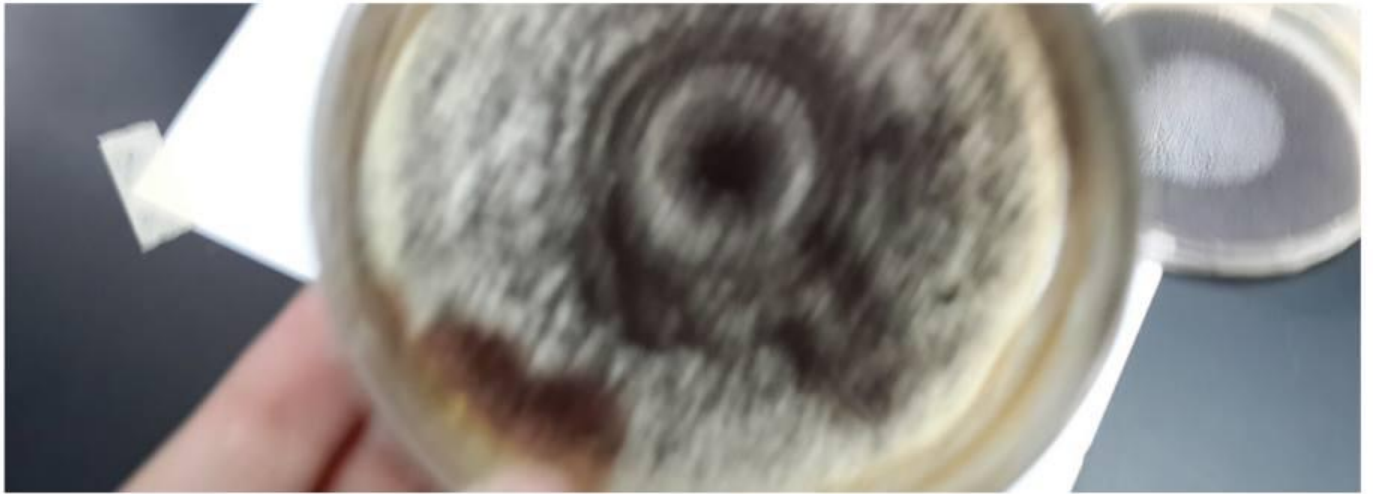


Streptococcus pneumoniae

Gram - Stain

Diplococci





Aspergillus niger

Black colonies on

Sabouraud Dextrose Agar





Penicillium spp.

Green Colonies on

Sabaroud Dextrose Agar

Mannitol Salt Agar

White Colony : Staphylococcus albus  
Coagulase -ve

Yellow Colony : Staphylococcus aureus  
Coagulase +ve

